

Datasheet for ABIN3043435
anti-SIRT6 antibody (AA 14-180)

3 Images

[Go to Product page](#)

Overview

Quantity:	100 µg
Target:	SIRT6
Binding Specificity:	AA 14-180
Reactivity:	Human, Mouse
Host:	Rabbit
Clonality:	Polyclonal
Application:	Western Blotting (WB), Immunohistochemistry (Paraffin-embedded Sections) (IHC (p))

Product Details

Purpose:	Rabbit IgG polyclonal antibody for NAD-dependent protein deacetylase sirtuin-6(SIRT6) detection. Tested with WB, IHC-P in Human,Mouse.
Immunogen:	E.coli-derived human SIRT6 recombinant protein (Position: D14-E180). Human SIRT6 shares 95% amino acid (aa) sequence identity with mouse SIRT6.
Isotype:	IgG
Cross-Reactivity (Details):	No cross reactivity with other proteins.
Characteristics:	<p>Rabbit IgG polyclonal antibody for NAD-dependent protein deacetylase sirtuin-6(SIRT6) detection. Tested with WB, IHC-P in Human,Mouse.</p> <p>Gene Name: sirtuin 6</p> <p>Protein Name: NAD-dependent protein deacetylase sirtuin-6</p>
Purification:	Immunogen affinity purified.

Target Details

Target:	SIRT6
Alternative Name:	SIRT6 (SIRT6 Products)
Background:	<p>SIRT6 is also known as SIR2L6. This gene encodes a member of the sirtuin family of proteins, homologs to the yeast Sir2 protein. Members of the sirtuin family are characterized by a sirtuin core domain and grouped into four classes. The functions of human sirtuins have not yet been determined, however, yeast sirtuin proteins are known to regulate epigenetic gene silencing and suppress recombination of rDNA. Studies suggest that the human sirtuins may function as intracellular regulatory proteins with mono-ADP-ribosyltransferase activity. The protein encoded by this gene is included in class IV of the sirtuin family. Alternative splicing results in multiple transcript variants.</p> <p>Synonyms: 2810449N18Rik antibody AI043036 antibody Mono ADP ribosyltransferase sirtuin 6 antibody Mono-ADP-ribosyltransferase sirtuin-6 antibody NAD-dependent deacetylase sirtuin-6 antibody NAD-dependent protein deacetylase sirtuin-6 antibody Regulatory protein SIR2 homolog antibody SIR2 like 6 antibody SIR2 like protein 6 antibody Sir2 related protein type 6 antibody SIR2-like protein 6 antibody SIR2L6 antibody SIRT 6 antibody SIRT6 antibody SIRT6_HUMAN antibody Sirtuin (silent mating type information regulation 2 homolog) 6 (<i>S. cerevisiae</i>) antibody Sirtuin 6 antibody Sirtuin type 6 antibody Sirtuin6 antibody</p>
Gene ID:	51548
UniProt:	Q8N6T7

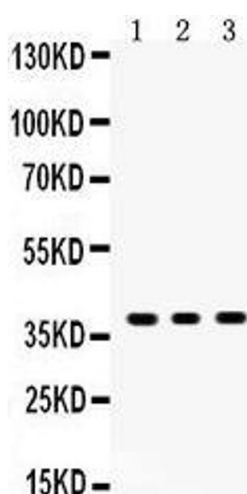
Application Details

Application Notes:	<p>WB: Concentration: 0.1-0.5 µg/mL, Tested Species: Human, The detection limit for SIRT6 is approximately 0.1 ng/lane under reducing conditions.</p> <p>IHC-P: Concentration: 0.5-1 µg/mL, Tested Species: Human, Mouse, Epitope Retrieval by Heat: Boiling the paraffin sections in 10 mM citrate buffer, pH 6.0, for 20 mins is required for the staining of formalin/paraffin sections.</p> <p>Notes: Tested Species: Species with positive results. Other applications have not been tested. Optimal dilutions should be determined by end users.</p>
Comment:	Antibody can be supported by chemiluminescence kit ABIN921124 in WB, supported by ABIN921231 in IHC(P).
Restrictions:	For Research Use only

Handling

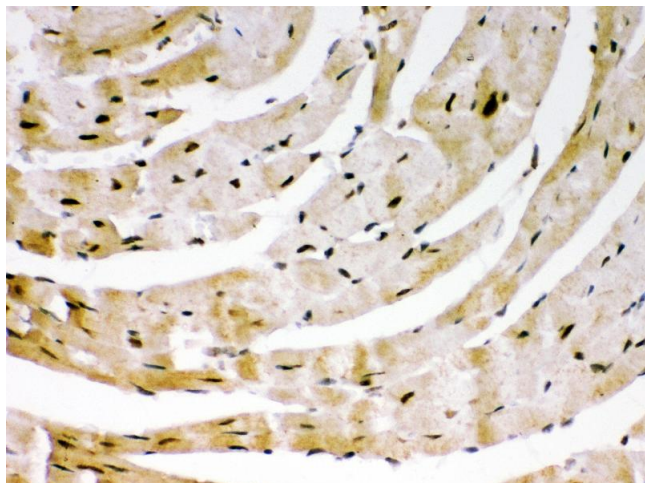
Format:	Lyophilized
Reconstitution:	Add 0.2 mL of distilled water will yield a concentration of 500 µg/mL.
Concentration:	500 µg/mL
Buffer:	Each vial contains 5 mg BSA, 0.9 mg NaCl, 0.2 mg Na ₂ HPO ₄ , 0.05 mg Sodium azide.
Preservative:	Sodium azide
Precaution of Use:	This product contains Sodium azide: a POISONOUS AND HAZARDOUS SUBSTANCE which should be handled by trained staff only.
Handling Advice:	Avoid repeated freezing and thawing.
Storage:	4 °C/-20 °C
Storage Comment:	At -20°C for one year. After reconstitution, at 4°C for one month. It can also be aliquotted and stored frozen at -20 °C for a longer time. Avoid repeated freezing and thawing.

Images



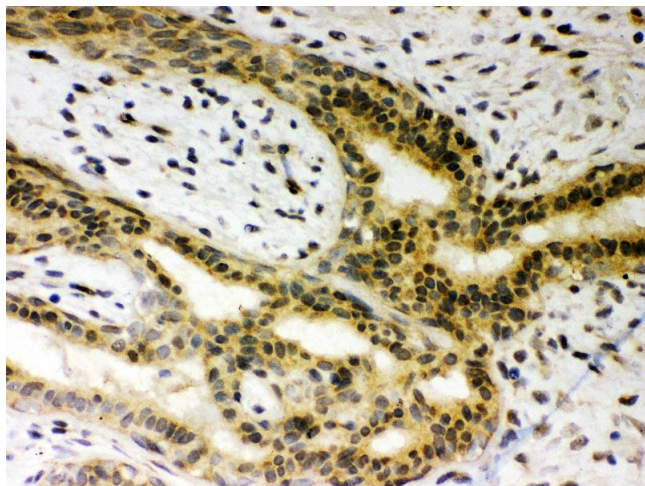
Western Blotting

Image 1. Anti- SIRT6Picoband antibody, Western blotting All lanes: Anti SIRT6 at 0.5ug/ml Lane 1: HELA Whole Cell Lysate at 40ug Lane 2: A549 Whole Cell Lysate at 40ug Lane 3: Human Placenta Tissue Lysate at 50ug Predicted bind size: 39KD Observed bind size: 39KD



Immunohistochemistry

Image 2. Anti- SIRT6Picoband antibody, IHC(P) IHC(P):
Mouse Cardiac Muscle Tissue



Immunohistochemistry

Image 3. Anti- SIRT6Picoband antibody, IHC(P) IHC(P):
Human Mammary Cancer Tissue