

Datasheet for ABIN3043439
anti-SOX1 antibody (Middle Region)



[Go to Product page](#)

1 Image

1 Publication

Overview

Quantity:	100 µg
Target:	SOX1
Binding Specificity:	AA 215-248, Middle Region
Reactivity:	Mouse, Rat
Host:	Rabbit
Clonality:	Polyclonal
Conjugate:	This SOX1 antibody is un-conjugated
Application:	Western Blotting (WB)

Product Details

Purpose:	Rabbit IgG polyclonal antibody for Transcription factor SOX-1(SOX1) detection. Tested with WB in Human,Mouse,Rat.
Immunogen:	A synthetic peptide corresponding to a sequence in the middle region of Human SOX1(215-248aa QHPGAGGAHPHAHPAHPHPHPHAHPHPNPQPMHR), identical to the related mouse sequence.
Sequence:	QHPGAGGAHP HAHPAHPHPH HPHAHPHPNPQ PMHR
Isotype:	IgG
Cross-Reactivity (Details):	Predicted Cross Reactivity: human No cross reactivity with other proteins. Predicted Cross Reactivity: Species predicted to be fit for the product based on sequence similarities.

Product Details

Characteristics:	Rabbit IgG polyclonal antibody for Transcription factor SOX-1(SOX1) detection. Tested with WB in Human,Mouse,Rat. Gene Name: SRY (sex determining region Y)-box 1 Protein Name: Transcription factor SOX-1
Purification:	Immunogen affinity purified.

Target Details

Target:	SOX1
Alternative Name:	SOX1 (SOX1 Products)
Background:	<p>SOX1 (for Sex determining region Y-box 1), located in 13q34, is a transcription factor in the Sox protein family. It means that this intronless gene encodes a member of the SOX (SRY-related HMG-box) family of transcription factors involved in the regulation of embryonic development and in the determination of the cell fate. The encoded protein may act as a transcriptional activator after forming a protein complex with other proteins. In mice, a similar protein regulates the gamma-crystallin genes and is essential for lens development. SOX1 expression is restricted to neuroectodermin the tetrapod embryo. It is expressed particularly in the ventral striatum.</p> <p>Synonyms: Sex determining region Y box 1 antibody sox1 antibody SOX1_HUMAN antibody SRY antibody SRY box containing gene 1 antibody SRY related HMG box gene 1 antibody Transcription factor Sox-1 antibody</p>
Gene ID:	6656
UniProt:	O00570

Application Details

Application Notes:	WB: Concentration: 0.1-0.5 µg/mL, Tested Species: Mouse, Rat, Predicted Species: Human , The detection limit for SOX1 is approximately 0.1 ng/lane under reducing conditions. Notes: Tested Species: Species with positive results. Predicted Species: Species predicted to be fit for the product based on sequence similarities. Other applications have not been tested. Optimal dilutions should be determined by end users.
Comment:	Antibody can be supported by chemiluminescence kit ABIN921124 in WB.
Restrictions:	For Research Use only

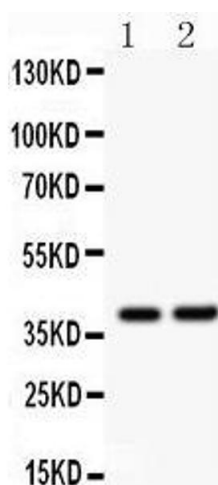
Handling

Format:	Lyophilized
Reconstitution:	Add 0.2 mL of distilled water will yield a concentration of 500 µg/mL.
Concentration:	500 µg/mL
Buffer:	Each vial contains 5 mg BSA, 0.9 mg NaCl, 0.2 mg Na ₂ HPO ₄ , 0.05 mg Sodium azide.
Preservative:	Sodium azide
Precaution of Use:	This product contains Sodium azide: a POISONOUS AND HAZARDOUS SUBSTANCE which should be handled by trained staff only.
Handling Advice:	Avoid repeated freezing and thawing.
Storage:	4 °C/-20 °C
Storage Comment:	At -20°C for one year. After reconstitution, at 4°C for one month. It can also be aliquotted and stored frozen at -20 °C for a longer time. Avoid repeated freezing and thawing.

Publications

Product cited in:	Yi, Xie, Liu, Wang, Xu, Liu, Li, Zhong, Peng: "Derivation and Identification of Motor Neurons from Human Urine-Derived Induced Pluripotent Stem Cells." in: Stem cells international , Vol. 2018, pp. 3628578, (2018) (PubMed).
-------------------	--

Images



Western Blotting

Image 1.