



Datasheet for ABIN3043457
anti-OPA1 antibody (C-Term)



[Go to Product page](#)

4 Images

Overview

Quantity:	100 µg
Target:	OPA1
Binding Specificity:	AA 919-955, C-Term
Reactivity:	Human, Mouse, Rat
Host:	Rabbit
Clonality:	Polyclonal
Conjugate:	This OPA1 antibody is un-conjugated
Application:	Western Blotting (WB), Immunohistochemistry (Paraffin-embedded Sections) (IHC (p))

Product Details

Purpose:	Rabbit IgG polyclonal antibody for Dynamin-like 120 kDa protein, mitochondrial(OPA1) detection. Tested with WB, IHC-P in Human,Mouse,Rat.
Immunogen:	A synthetic peptide corresponding to a sequence at the C-terminus of human OPA1 (919-955aa EDGEKKIKLLTGKRVQLAEDLKKVREIQEKLDAFIEA), different from the related mouse and rat sequences by one amino acid.
Sequence:	EDGEKKIKLL TGKRVQLAED LKKVREIQEK LDAFIEA
Isotype:	IgG
Cross-Reactivity (Details):	No cross reactivity with other proteins.
Characteristics:	Rabbit IgG polyclonal antibody for Dynamin-like 120 kDa protein, mitochondrial(OPA1) detection. Tested with WB, IHC-P in Human,Mouse,Rat. Gene Name: optic atrophy 1 (autosomal dominant)

Product Details

Protein Name: Dynamin-like 120 kDa protein, mitochondrial

Purification: Immunogen affinity purified.

Target Details

Target: OPA1

Alternative Name: OPA1 ([OPA1 Products](#))

Background: Dynamin-like 120 kDa protein, mitochondrial is a protein that in humans is encoded by the OPA1 gene. It is mapped to 3q29. This protein regulates mitochondrial fusion and cristae structure in the inner mitochondrial membrane (IMM) and contributes to ATP synthesis and apoptosis. This gene product is a nuclear-encoded mitochondrial protein with similarity to dynamin-related GTPases. It is a component of the mitochondrial network. Mutations in this gene have been associated with optic atrophy type 1, which is a dominantly inherited optic neuropathy resulting in progressive loss of visual acuity, leading in many cases to legal blindness. Multiple transcript variants encoding different isoforms have been found for this gene.

Synonyms: Dynamin like 120 kDa protein antibody|Dynamin like 120 kDa protein, mitochondrial antibody|Dynamin-like 120 kDa protein, form S1 antibody|FLJ12460 antibody|Juvenile kjer type optic atrophy antibody|KIAA0567 antibody|KJER type antibody|Large GTP binding protein antibody|largeG antibody|MGM1 antibody|Mitochondrial dynamin like 120 kDa protein antibody|Mitochondrial dynamin like GTPase antibody|NPG antibody|NTG antibody|OAK antibody|OPA 1 antibody|opa1 antibody|OPA1 gene antibody|OPA1_HUMAN antibody|Optic atrophy 1 (autosomal dominant) antibody|OPTIC ATROPHY 1 antibody|Optic atrophy 1 gene protein antibody|Optic atrophy 1 homolog (human) antibody|Optic atrophy protein 1 antibody|Optic atrophy protein 1 homolog antibody|

Gene ID: 4976

UniProt: [O60313](#)

Pathways: [Tube Formation](#)

Application Details

Application Notes: WB: Concentration: 0.1-0.5 µg/mL, Tested Species: Human
IHC-P: Concentration: 0.5-1 µg/mL, Tested Species: Human, Mouse, Rat, Epitope Retrieval by Heat: Boiling the paraffin sections in 10 mM citrate buffer, pH 6.0, for 20 mins is required for the

Application Details

staining of formalin/paraffin sections.

Notes: Tested Species: Species with positive results. Other applications have not been tested.

Optimal dilutions should be determined by end users.

Comment: Antibody can be supported by chemiluminescence kit ABIN921124 in WB, supported by ABIN921231 in IHC(P).

Restrictions: For Research Use only

Handling

Format: Lyophilized

Reconstitution: Add 0.2 mL of distilled water will yield a concentration of 500 µg/mL.

Concentration: 500 µg/mL

Buffer: Each vial contains 5 mg BSA, 0.9 mg NaCl, 0.2 mg Na₂HPO₄, 0.05 mg Sodium azide.

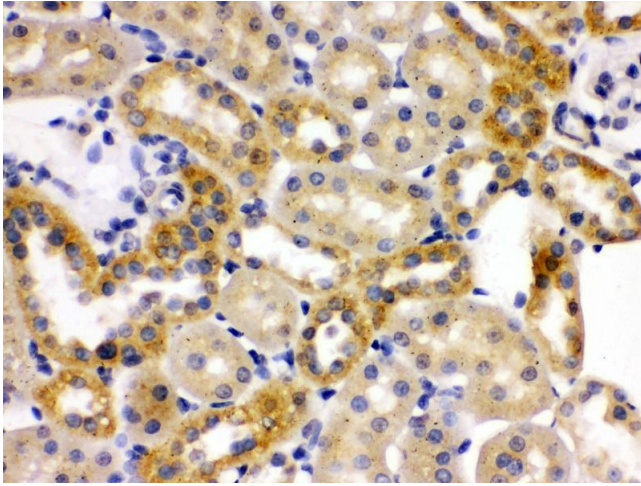
Preservative: Sodium azide

Precaution of Use: This product contains Sodium azide: a POISONOUS AND HAZARDOUS SUBSTANCE which should be handled by trained staff only.

Handling Advice: Avoid repeated freezing and thawing.

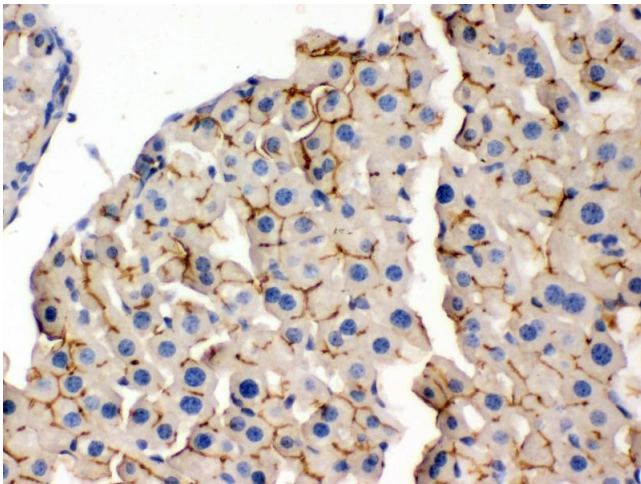
Storage: 4 °C/-20 °C

Storage Comment: At -20°C for one year. After reconstitution, at 4°C for one month.
It can also be aliquotted and stored frozen at -20 °C for a longer time. Avoid repeated freezing and thawing.



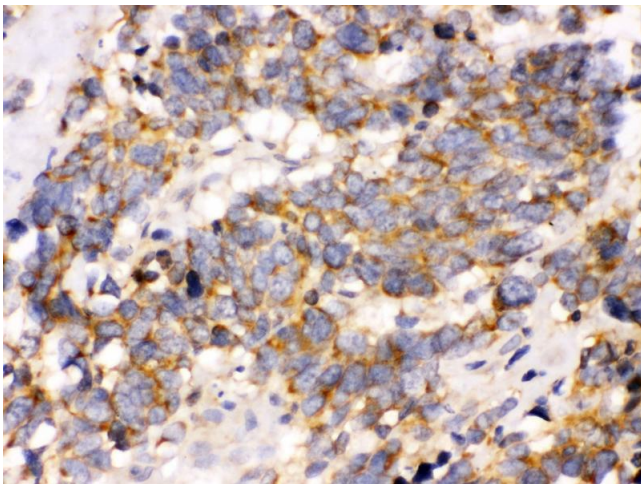
Immunohistochemistry

Image 1. Anti- OPA1 Picoband antibody, IHC(P) IHC(P): Rat Kidney Tissue



Immunohistochemistry

Image 2. Anti- OPA1 Picoband antibody, IHC(P) IHC(P): Mouse Liver Tissue



Immunohistochemistry

Image 3. Anti- OPA1 Picoband antibody, IHC(P) IHC(P): Human Lung Cancer Tissue

Please check the [product details page](#) for more images. Overall 4 images are available for ABIN3043457.