

Datasheet for ABIN3043480

anti-Cyclin A1 antibody (AA 64-263)[Go to Product page](#)**1** Image**2** Publications

Overview

Quantity:	100 µg
Target:	Cyclin A1 (CCNA1)
Binding Specificity:	AA 64-263
Reactivity:	Human
Host:	Rabbit
Clonality:	Polyclonal
Conjugate:	This Cyclin A1 antibody is un-conjugated
Application:	Western Blotting (WB)

Product Details

Purpose:	Rabbit IgG polyclonal antibody for Cyclin-A1(CCNA1) detection. Tested with WB in Human.
Immunogen:	E.coli-derived human Cyclin A1 recombinant protein (Position: D64-E263). Human Cyclin A1 shares 78.5% and 79.5% amino acid (aa) sequence identity with mouse and rat Cyclin A1, respectively.
Isotype:	IgG
Cross-Reactivity (Details):	No cross reactivity with other proteins.
Characteristics:	Rabbit IgG polyclonal antibody for Cyclin-A1(CCNA1) detection. Tested with WB in Human. Gene Name: cyclin A1 Protein Name: Cyclin-A1
Purification:	Immunogen affinity purified.

Target Details

Target:	Cyclin A1 (CCNA1)
Alternative Name:	CCNA1 (CCNA1 Products)
Background:	<p>Cyclin-A1 is a protein that in humans is encoded by the CCNA1 gene. The protein encoded by this gene belongs to the highly conserved cyclin family, whose members are characterized by a dramatic periodicity in protein abundance through the cell cycle. Cyclins function as regulators of CDK kinases. Different cyclins exhibit distinct expression and degradation patterns which contribute to the temporal coordination of each mitotic event. The cyclin encoded by this gene was shown to be expressed in testis and brain, as well as in several leukemic cell lines, and is thought to primarily function in the control of the germline meiotic cell cycle. This cyclin binds both CDK2 and CDC2 kinases, which give two distinct kinase activities, one appearing in S phase, the other in G2, and thus regulate separate functions in cell cycle. Also this cyclin was found to bind to important cell cycle regulators, such as Rb family proteins, transcription factor E2F-1, and the p21 family proteins. Multiple transcript variants encoding different isoforms have been found for this gene.</p> <p>Synonyms: CCN A1 antibody CCNA 1 antibody CCNA1 antibody CCNA1_HUMAN antibody Cyclin-A1 antibody CyclinA1 antibody G2/mitotic specific cyclin A1 antibody MGC132235 antibody MGC159139 antibody</p>
Gene ID:	8900
UniProt:	P78396
Pathways:	Apoptosis , Cell Division Cycle , AMPK Signaling , Mitotic G1-G1/S Phases , DNA Replication , M Phase , Synthesis of DNA

Application Details

Application Notes:	WB: Concentration: 0.1-0.5 µg/mL, Tested Species: Human Notes: Tested Species: Species with positive results. Other applications have not been tested. Optimal dilutions should be determined by end users.
Comment:	Antibody can be supported by chemiluminescence kit ABIN921124 in WB.
Restrictions:	For Research Use only

Handling

Format:	Lyophilized
---------	-------------

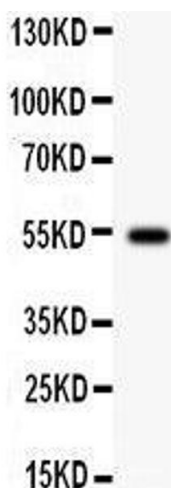
Handling

Reconstitution:	Add 0.2 mL of distilled water will yield a concentration of 500 µg/mL.
Concentration:	500 µg/mL
Buffer:	Each vial contains 5 mg BSA, 0.9 mg NaCl, 0.2 mg Na ₂ HPO ₄ , 0.05 mg Sodium azide.
Preservative:	Sodium azide
Precaution of Use:	This product contains Sodium azide: a POISONOUS AND HAZARDOUS SUBSTANCE which should be handled by trained staff only.
Handling Advice:	Avoid repeated freezing and thawing.
Storage:	4 °C/-20 °C
Storage Comment:	At -20°C for one year. After reconstitution, at 4°C for one month. It can also be aliquotted and stored frozen at -20 °C for a longer time. Avoid repeated freezing and thawing.

Publications

Product cited in:	Li, Zhao, Qi, Wang, Zhang, Li, Qin: "lncRNA Ftx promotes aerobic glycolysis and tumor progression through the PPAR γ pathway in hepatocellular carcinoma." in: International journal of oncology , Vol. 53, Issue 2, pp. 551-566, (2018) (PubMed).
-------------------	--

Images



Western Blotting

Image 1. Anti- Cyclin A1 Picoband antibody, Western blotting All lanes: Anti Cyclin A1 at 0.5ug/ml WB: Human Placenta Tissue Lysate at 50ug Predicted bind size: 52KD Observed bind size: 52KD