

Datasheet for ABIN3043481
anti-Cyclin A antibody (AA 10-168)



[Go to Product page](#)

2 Images

4 Publications

Overview

Quantity:	100 µg
Target:	Cyclin A (CCNA2)
Binding Specificity:	AA 10-168
Reactivity:	Human, Rat
Host:	Rabbit
Clonality:	Polyclonal
Conjugate:	This Cyclin A antibody is un-conjugated
Application:	Western Blotting (WB), Immunohistochemistry (Paraffin-embedded Sections) (IHC (p))

Product Details

Purpose:	Rabbit IgG polyclonal antibody for Cyclin-A2(CCNA2) detection. Tested with WB, IHC-P in Human,Rat.
Immunogen:	E.coli-derived human Cyclin A2 recombinant protein (Position: A10-K168). Human Cyclin A2 shares 74.5% amino acid (aa) sequence identity with mouse Cyclin A2.
Isotype:	IgG
Cross-Reactivity (Details):	No cross reactivity with other proteins.
Characteristics:	Rabbit IgG polyclonal antibody for Cyclin-A2(CCNA2) detection. Tested with WB, IHC-P in Human,Rat. Gene Name: cyclin A2 Protein Name: Cyclin-A2
Purification:	Immunogen affinity purified.

Target Details

Target: Cyclin A (CCNA2)

Alternative Name: CCNA2 ([CCNA2 Products](#))

Background: Cyclin A2, known as CCNA2, is mapped to 4q27. The protein encoded by this gene belongs to the highly conserved cyclin family, whose members are characterized by a dramatic periodicity in protein abundance through the cell cycle. Cyclins function as regulators of CDK kinases. Different cyclins exhibit distinct expression and degradation patterns which contribute to the temporal coordination of each mitotic event. In contrast to cyclin A1, which is present only in germ cells, this cyclin is expressed in all tissues tested. This cyclin binds and activates CDC2 or CDK2 kinases, and thus promotes both cell cycle G1/S and G2/M transitions. And Cyclin A2 is synthesized at the onset of S phase and localizes to the nucleus, where the cyclin A2-CDK2 complex is implicated in the initiation and progression of DNA synthesis. Phosphorylation of CDC6 and MCM4 by the cyclin A2-CDK2 complex prevents re-replication of DNA during the cell cycle.

Synonyms: CCN1 antibody|CCNA antibody|CCNA2 antibody|CCNA2_HUMAN antibody|Cyclin A2 antibody|Cyclin-A antibody|Cyclin-A2 antibody

Gene ID: 890

UniProt: [P20248](#)

Pathways: [PI3K-Akt Signaling](#), [Cell Division Cycle](#), [AMPK Signaling](#), [Mitotic G1-G1/S Phases](#), [DNA Replication](#), [M Phase](#), [Synthesis of DNA](#)

Application Details

Application Notes: WB: Concentration: 0.1-0.5 µg/mL, Tested Species: Human, Rat
IHC-P: Concentration: 0.5-1 µg/mL, Tested Species: Human, Epitope Retrieval by Heat: Boiling the paraffin sections in 10 mM citrate buffer, pH 6.0, for 20 mins is required for the staining of formalin/paraffin sections.
Notes: Tested Species: Species with positive results. Other applications have not been tested. Optimal dilutions should be determined by end users.

Comment: Antibody can be supported by chemiluminescence kit ABIN921124 in WB, supported by ABIN921231 in IHC(P).

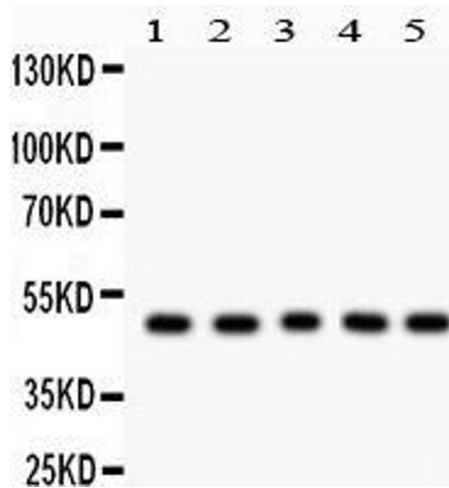
Restrictions: For Research Use only

Handling

Format:	Lyophilized
Reconstitution:	Add 0.2 mL of distilled water will yield a concentration of 500 µg/mL.
Concentration:	500 µg/mL
Buffer:	Each vial contains 5 mg BSA, 0.9 mg NaCl, 0.2 mg Na ₂ HPO ₄ , 0.05 mg Sodium azide.
Preservative:	Sodium azide
Precaution of Use:	This product contains Sodium azide: a POISONOUS AND HAZARDOUS SUBSTANCE which should be handled by trained staff only.
Handling Advice:	Avoid repeated freezing and thawing.
Storage:	4 °C/-20 °C
Storage Comment:	At -20°C for one year. After reconstitution, at 4°C for one month. It can also be aliquotted and stored frozen at -20 °C for a longer time. Avoid repeated freezing and thawing.

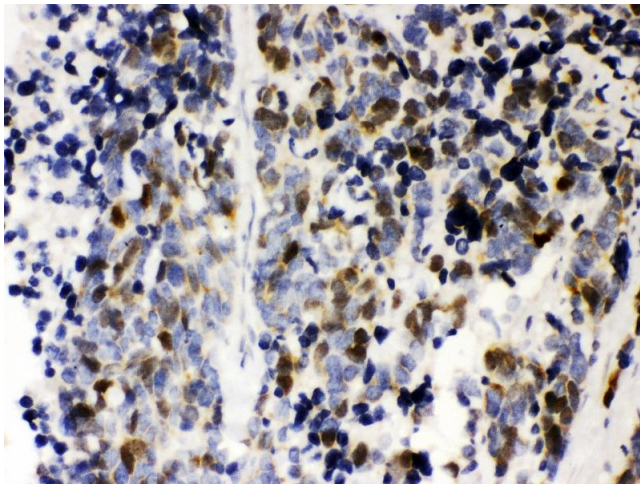
Publications

Product cited in:	<p>Zhang, Chang, Zhao, Gao, Wang, Li, Zhang, Zhang, Xu: "The novel protein C9orf116 promotes rat liver cell line BRL-3A proliferation." in: PLoS ONE, Vol. 12, Issue 7, pp. e0180607, (2017) (PubMed).</p> <p>Zhang, Chang, Li, Zhang, Xu: "The novel protein C3orf43 accelerates hepatocyte proliferation." in: Cellular & molecular biology letters, Vol. 22, pp. 21, (2017) (PubMed).</p> <p>Wang, Ge, Chen, Hu, Li, Song, Xu, Ye: "A New Double Stranded RNA Suppresses Bladder Cancer Development by Upregulating p21 (Waf1/CIP1) Expression." in: BioMed research international, Vol. 2015, pp. 304753, (2016) (PubMed).</p> <p>Chen, Zhang, Liang, Zhou, Ding, Yang, Liu, Wu, Man, Zhang, Chen: "Activin A induces growth arrest through a SMAD- dependent pathway in hepatic progenitor cells." in: Cell communication and signaling : CCS, Vol. 12, pp. 18, (2014) (PubMed).</p>
-------------------	---



Western Blotting

Image 1. Anti- Cyclin A2 Picoband antibody, Western blotting All lanes: Anti Cyclin A2 at 0.5ug/ml Lane 1: Rat Skeletal Muscle Tissue Lysate at 50ug Lane 2: HELA Whole Cell Lysate at 40ug Lane 3: COLO320 Whole Cell Lysate at 40ug Lane 4: HEPG2 Whole Cell Lysate at 40ug Lane 5: MCF-7 Whole Cell Lysate at 40ug Predicted bind size: 49KD Observed bind size: 49KD



Immunohistochemistry

Image 2. Anti- Cyclin A2 Picoband antibody, IHC(P) IHC(P): Human Lung Cancer Tissue