



[Go to Product page](#)

Datasheet for ABIN3043500
anti-CDC6 antibody (AA 147-549)

3 Images

Overview

Quantity:	100 µg
Target:	CDC6
Binding Specificity:	AA 147-549
Reactivity:	Human, Rat
Host:	Rabbit
Clonality:	Polyclonal
Application:	Western Blotting (WB), Immunohistochemistry (Paraffin-embedded Sections) (IHC (p))

Product Details

Purpose:	Rabbit IgG polyclonal antibody for Cell division control protein 6 homolog(CDC6) detection. Tested with WB, IHC-P in Human,Rat.
Immunogen:	E.coli-derived human Cdc6 recombinant protein (Position: V147-A549). Human Cdc6 shares 87.3% amino acid (aa) sequence identity with mouse Cdc6.
Isotype:	IgG
Cross-Reactivity (Details):	No cross reactivity with other proteins.
Characteristics:	Rabbit IgG polyclonal antibody for Cell division control protein 6 homolog(CDC6) detection. Tested with WB, IHC-P in Human,Rat. Gene Name: cell division cycle 6 Protein Name: Cell division control protein 6 homolog
Purification:	Immunogen affinity purified.

Target Details

Target: CDC6

Alternative Name: CDC6 ([CDC6 Products](#))

Background: Cell division control protein 6 homolog, also called CDC18L or CDC6, is a protein that in humans is encoded by the CDC6 gene. By analysis of somatic cell hybrids and by fluorescence in situ hybridization, this gene is mapped to 17q21.2. The protein encoded by this gene is highly similar to *Saccharomyces cerevisiae* Cdc6, a protein essential for the initiation of DNA replication. And this protein functions as a regulator at the early steps of DNA replication. It localizes in cell nucleus during cell cycle G1, but translocates to the cytoplasm at the start of S phase. The subcellular translocation of this protein during cell cycle is regulated through its phosphorylation by Cdks. Transcription of this protein was reported to be regulated in response to mitogenic signals through transcriptional control mechanism involving E2F proteins. This gene is involved in the initiation of DNA replication.

Synonyms: Cdc 18L antibody|Cdc 6 antibody|CDC18 (cell division cycle 18, *S.pombe*, homolog) like antibody|CDC18 (*S.pombe*) antibody|Cdc18 related protein antibody|CDC18(*S.pombe*) antibody| Cdc18-related protein antibody|Cdc18L antibody|cdc6 antibody|CDC6 cell division cycle 6 homolog antibody|CDC6 related protein antibody|CDC6-related protein antibody| CDC6_HUMAN antibody|Cdc6p antibody|Cell Cycle Controller antibody|CELL CYCLE CONTROLLER CDC6 antibody| Cell division control protein 6 antibody|Cell division control protein 6 homolog antibody| Cell Division Cycle 18 antibody|Cell division cycle 6 homolog (*S. cerevisiae*) antibody|Cell division cycle 6 homolog antibody|HsCDC 6 antibody|HsCDC18 antibody|HsCDC6 antibody|p62 antibody|p62(cdc 6) antibody|p62(cdc6) antibody

Gene ID: 990

UniProt: [Q99741](#)

Pathways: [DNA Replication, Synthesis of DNA](#)

Application Details

Application Notes: WB: Concentration: 0.1-0.5 µg/mL, Tested Species: Human, Rat
IHC-P: Concentration: 0.5-1 µg/mL, Tested Species: Human, Rat, Epitope Retrieval by Heat: Boiling the paraffin sections in 10 mM citrate buffer, pH 6.0, for 20 mins is required for the staining of formalin/paraffin sections.
Notes: Tested Species: Species with positive results. Other applications have not been tested.
Optimal dilutions should be determined by end users.

Application Details

Comment: Antibody can be supported by chemiluminescence kit ABIN921124 in WB, supported by ABIN921231 in IHC(P).

Restrictions: For Research Use only

Handling

Format: Lyophilized

Reconstitution: Add 0.2 mL of distilled water will yield a concentration of 500 µg/mL.

Concentration: 500 µg/mL

Buffer: Each vial contains 5 mg BSA, 0.9 mg NaCl, 0.2 mg Na₂HPO₄, 0.05 mg Sodium azide.

Preservative: Sodium azide

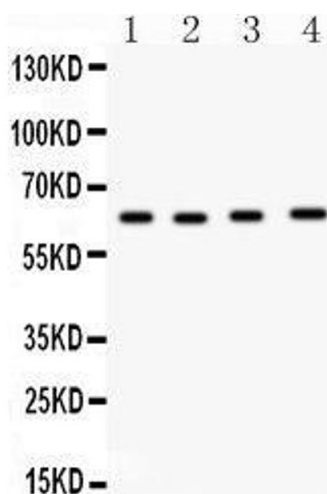
Precaution of Use: This product contains Sodium azide: a POISONOUS AND HAZARDOUS SUBSTANCE which should be handled by trained staff only.

Handling Advice: Avoid repeated freezing and thawing.

Storage: 4 °C/-20 °C

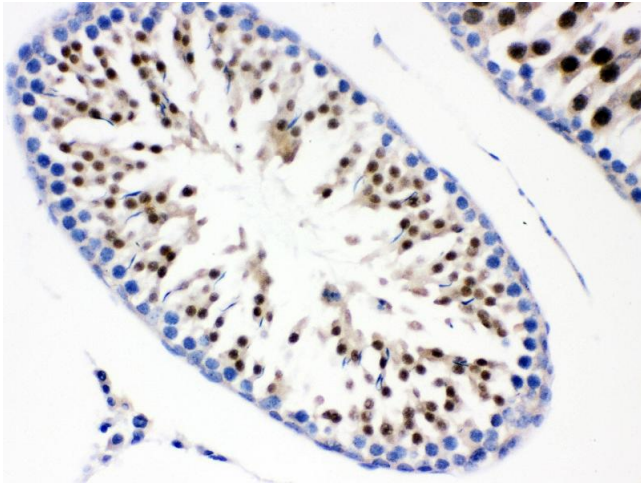
Storage Comment: At -20°C for one year. After reconstitution, at 4°C for one month.
It can also be aliquotted and stored frozen at -20 °C for a longer time. Avoid repeated freezing and thawing.

Images



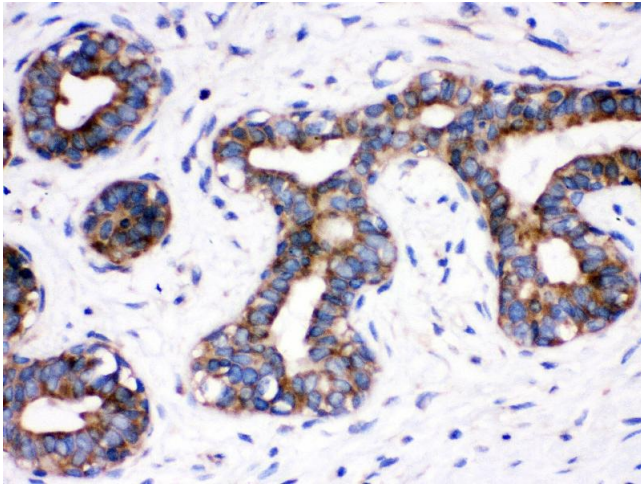
Western Blotting

Image 1.



Immunohistochemistry (Paraffin-embedded Sections)

Image 2.



Immunohistochemistry (Paraffin-embedded Sections)

Image 3.