

Datasheet for ABIN3043515
anti-ABI1 antibody (N-Term)[Go to Product page](#)

4 Images

1 Publication

Overview

Quantity:	100 µg
Target:	ABI1
Binding Specificity:	AA 151-175, N-Term
Reactivity:	Human, Rat, Mouse
Host:	Rabbit
Clonality:	Polyclonal
Conjugate:	This ABI1 antibody is un-conjugated
Application:	Western Blotting (WB), Immunohistochemistry (Paraffin-embedded Sections) (IHC (p))

Product Details

Purpose:	Rabbit IgG polyclonal antibody for Abl interactor 1(ABI1) detection. Tested with WB, IHC-P in Human,Mouse,Rat.
Immunogen:	A synthetic peptide corresponding to a sequence at the N-terminus of human ABI1 (151-175aa HGVKWLKAKHGNQPARTGTLSTN), identical to the related mouse and rat sequences.
Sequence:	HGVKWLKAKH GNNQPARTGT LSRTN
Isotype:	IgG
Cross-Reactivity (Details):	No cross reactivity with other proteins.
Characteristics:	Rabbit IgG polyclonal antibody for Abl interactor 1(ABI1) detection. Tested with WB, IHC-P in Human,Mouse,Rat. Gene Name: abl-interactor 1 Protein Name: Abl interactor 1

Product Details

Purification: Immunogen affinity purified.

Target Details

Target: ABI1

Alternative Name: ABI1 ([ABI1 Products](#))

Background: SSH3BP1 is also known as ABI1. ABI1 is a human homolog of mouse Abl-interactor-1 (Abi1), mapped on 10p11.2. ABI1 participates in the transduction of signals from Ras to Rac by regulating Rac-specific guanine nucleotide exchange factor (GEF) activities. It dramatically promoted ABL1-mediated tyrosine phosphorylation of MENA, but not of other substrates. Abi-1 regulates c-Abl-mediated phosphorylation of Mena by interacting with both proteins. ABI1 plays a role in the leukemogenesis by translocating to MLL.

Synonyms: Abelson interactor 1 antibody|ABI 1 antibody|Abi-1 antibody|ABI1 antibody|ABI1_HUMAN antibody|Abl binding protein 4 antibody|Abl interactor 1 antibody|Abl interactor protein 1 antibody|Abl interactor protein 1 long antibody|Abl-binding protein 4 antibody|AblBP4 antibody|Ablphilin 1 antibody|E3B1 antibody|Eps8 binding protein antibody|Eps8 SH3 domain binding protein antibody|Eps8 SH3 domain-binding protein antibody|Eps8-binding protein antibody|Hssh3bp1 antibody|Interactor protein AblBP4 antibody|NAP1 antibody|Nap1 binding protein antibody|Nap1-binding protein antibody|NAP1BP antibody|Spectrin SH3 domain binding protein 1 antibody|Spectrin SH3 domain-binding protein 1 antibody|SSH3BP antibody

Gene ID: 10006

Pathways: [RTK Signaling](#), [Response to Water Deprivation](#), [ER-Nucleus Signaling](#)

Application Details

Application Notes: WB: Concentration: 0.1-0.5 µg/mL, Tested Species: Human, Mouse, Rat, The detection limit for ABI1 is approximately 0.1 ng/lane under reducing conditions.

IHC-P: Concentration: 0.5-1 µg/mL, Tested Species: Mouse, Rat, Predicted Species: Human ,

Epitope Retrieval by Heat: Boiling the paraffin sections in 10 mM citrate buffer, pH 6.0, for 20 mins is required for the staining of formalin/paraffin sections.

Notes: Tested Species: Species with positive results. Predicted Species: Species predicted to be fit for the product based on sequence similarities. Other applications have not been tested.

Optimal dilutions should be determined by end users.

Application Details

Comment: Antibody can be supported by chemiluminescence kit ABIN921124 in WB, supported by ABIN921231 in IHC(P).

Restrictions: For Research Use only

Handling

Format: Lyophilized

Reconstitution: Add 0.2 mL of distilled water will yield a concentration of 500 µg/mL.

Concentration: 500 µg/mL

Buffer: Each vial contains 5 mg BSA, 0.9 mg NaCl, 0.2 mg Na₂HPO₄, 0.05 mg Sodium azide.

Preservative: Sodium azide

Precaution of Use: This product contains Sodium azide: a POISONOUS AND HAZARDOUS SUBSTANCE which should be handled by trained staff only.

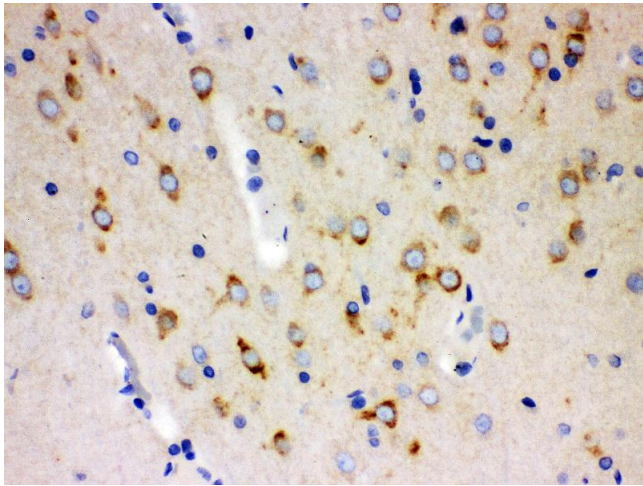
Handling Advice: Avoid repeated freezing and thawing.

Storage: 4 °C/-20 °C

Storage Comment: At -20°C for one year. After reconstitution, at 4°C for one month.
It can also be aliquotted and stored frozen at -20 °C for a longer time. Avoid repeated freezing and thawing.

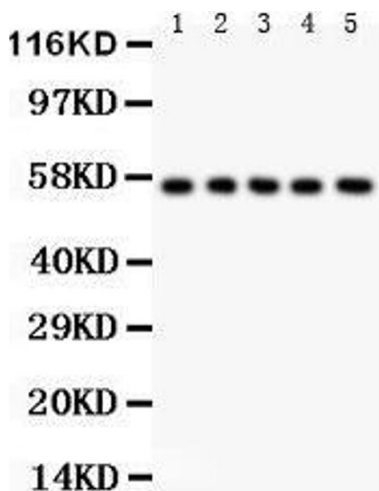
Publications

Product cited in: Liu, Mei, Xu, Yu, Shi, Zhang, Wang, Zhang, Gao, Zhang, He: "Dual Receptor Recognizing Cell Penetrating Peptide for Selective Targeting, Efficient Intratumoral Diffusion and Synthesized Anti-Glioma Therapy." in: **Theranostics**, Vol. 6, Issue 2, pp. 177-91, (2017) ([PubMed](#)).



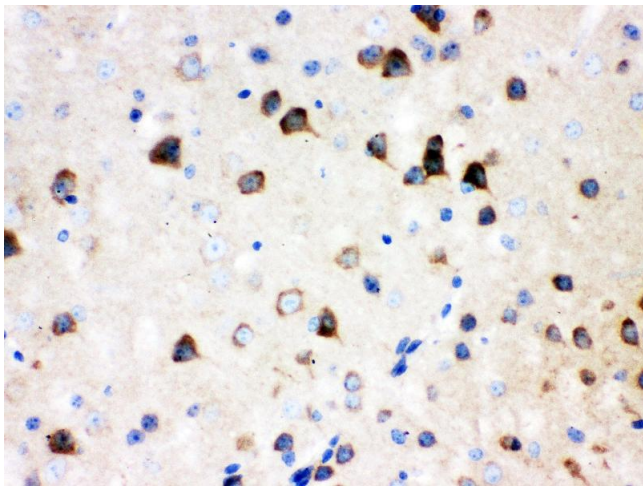
Immunohistochemistry

Image 1. Anti- SSH3BP1 Picoband antibody, IHC(P) IHC(P):
Rat Brain Tissue



Western Blotting

Image 2.



Immunohistochemistry

Image 3. Anti- SSH3BP1 Picoband antibody, IHC(P) IHC(P):
Mouse Brain Tissue

Please check the [product details page](#) for more images. Overall 4 images are available for ABIN3043515.