

Datasheet for ABIN3043590
anti-Parvin alpha antibody (Middle Region)[Go to Product page](#)

2 Images

Overview

Quantity:	100 µg
Target:	Parvin alpha (PARVA)
Binding Specificity:	AA 155-185, Middle Region
Reactivity:	Human, Mouse, Rat
Host:	Rabbit
Clonality:	Polyclonal
Conjugate:	This Parvin alpha antibody is un-conjugated
Application:	Western Blotting (WB), Immunohistochemistry (Paraffin-embedded Sections) (IHC (p))

Product Details

Purpose:	Rabbit IgG polyclonal antibody for Alpha-parvin(PARVA) detection. Tested with WB, IHC-P in Human,Mouse,Rat.
Immunogen:	A synthetic peptide corresponding to a sequence in the middle region of human Parvin alpha (155-185aa QKLQTVLEKINETLKLPPRSIKWNVDSVHAK), identical to the related mouse sequence, and different from the related rat sequence by one amino acid.
Sequence:	QKLQTVLEKI NETLKLPPRS IKWNVDSVHA K
Isotype:	IgG
Cross-Reactivity (Details):	No cross reactivity with other proteins.
Characteristics:	Rabbit IgG polyclonal antibody for Alpha-parvin(PARVA) detection. Tested with WB, IHC-P in Human,Mouse,Rat. Gene Name: parvin, alpha

Product Details

Protein Name: Alpha-parvin

Purification: Immunogen affinity purified.

Target Details

Target: Parvin alpha (PARVA)

Alternative Name: PARVA ([PARVA Products](#))

Background: Parvin alpha is a protein that in humans is encoded by the PARVA gene. It is located on 11p15.3. PARVA belongs to the parvin family of actin-binding proteins. Parvins are associated with focal contacts and contain calponin homology domains that bind to actin filaments. The encoded protein is part of the integrin-linked kinase signaling complex and plays a role in cell adhesion, motility and survival.

Synonyms: Actopaxin antibody|Alpha parvin antibody|Alpha-parvin antibody|Calponin like integrin linked kinase binding protein antibody|Calponin-like integrin-linked kinase-binding protein antibody|CH ILKBP antibody|CH-ILKBP antibody|FLJ10793 antibody|FLJ12254 antibody|Matrix remodelling associated 2 antibody|Matrix remodelling associated protein 2 antibody|Matrix-remodeling-associated protein 2 antibody|MXRA 2 antibody|MXRA2 antibody|PARV A antibody| PARVA antibody|PARVA_HUMAN antibody

Gene ID: 55742

Pathways: [Smooth Muscle Cell Migration](#)

Application Details

Application Notes: WB: Concentration: 0.1-0.5 µg/mL, Tested Species: Human, Mouse, Rat
IHC-P: Concentration: 0.5-1 µg/mL, Tested Species: Human, Epitope Retrieval by Heat: Boiling the paraffin sections in 10 mM citrate buffer, pH 6.0, for 20 mins is required for the staining of formalin/paraffin sections.
Notes: Tested Species: Species with positive results. Other applications have not been tested. Optimal dilutions should be determined by end users.

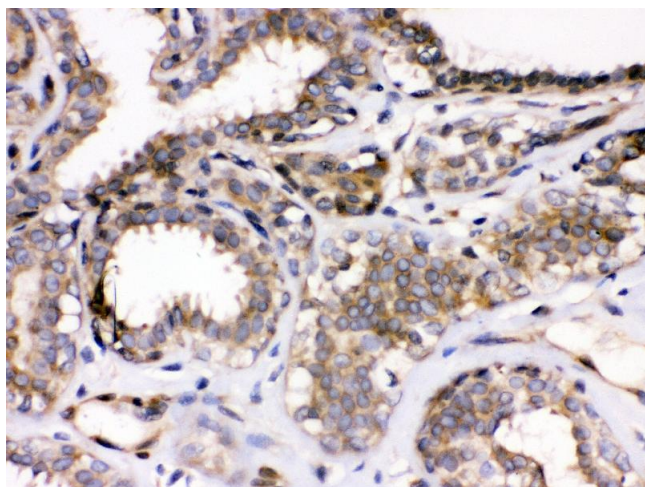
Comment: Antibody can be supported by chemiluminescence kit ABIN921124 in WB, supported by ABIN921231 in IHC(P).

Restrictions: For Research Use only

Handling

Format:	Lyophilized
Reconstitution:	Add 0.2 mL of distilled water will yield a concentration of 500 µg/mL.
Concentration:	500 µg/mL
Buffer:	Each vial contains 5 mg BSA, 0.9 mg NaCl, 0.2 mg Na ₂ HPO ₄ , 0.05 mg Sodium azide.
Preservative:	Sodium azide
Precaution of Use:	This product contains Sodium azide: a POISONOUS AND HAZARDOUS SUBSTANCE which should be handled by trained staff only.
Handling Advice:	Avoid repeated freezing and thawing.
Storage:	4 °C/-20 °C
Storage Comment:	At -20°C for one year. After reconstitution, at 4°C for one month. It can also be aliquotted and stored frozen at -20 °C for a longer time. Avoid repeated freezing and thawing.

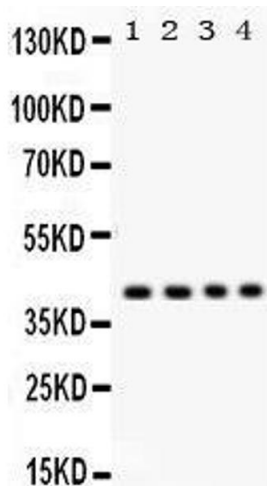
Images



Immunohistochemistry

Image 1. Anti- Parvin alpha Picoband antibody, IHC(P)

IHC(P): Human Mammary Cancer Tissue



Western Blotting

Image 2.