

Datasheet for ABIN3043591
anti-PAX2A antibody (C-Term)[Go to Product page](#)

4 Images

1 Publication

Overview

Quantity:	100 µg
Target:	PAX2A
Binding Specificity:	AA 248-282, C-Term
Reactivity:	Human, Mouse, Rat
Host:	Rabbit
Clonality:	Polyclonal
Application:	Western Blotting (WB), Immunohistochemistry (Paraffin-embedded Sections) (IHC (p))

Product Details

Purpose:	Rabbit IgG polyclonal antibody for Paired box protein Pax-2(PAX2) detection. Tested with WB, IHC-P in Human,Mouse,Rat.
Immunogen:	A synthetic peptide corresponding to a sequence at the C-terminus of human Pax2 (248-282aa RKHLRADTFTQQLEALDRVFERPSYPDVFQASEH), identical to the related mouse sequence.
Sequence:	RKHLRADTFT QQLEALDRV FERPSYPDVF QASEH
Isotype:	IgG
Cross-Reactivity (Details):	No cross reactivity with other proteins.
Characteristics:	Rabbit IgG polyclonal antibody for Paired box protein Pax-2(PAX2) detection. Tested with WB, IHC-P in Human,Mouse,Rat. Gene Name: paired box 2 Protein Name: Paired box protein Pax-2
Purification:	Immunogen affinity purified.

Target Details

Target:	PAX2A
Alternative Name:	PAX2 (PAX2A Products)
Background:	<p>Paired box gene 2, also known as PAX2, is a protein which in humans is encoded by the PAX2 gene. This gene is mapped to 10q24. PAX2 encodes paired box gene 2, one of many human homologues of the Drosophila melanogaster gene prd. The central feature of this transcription factor gene family is the conserved DNA-binding paired box domain. PAX2 is believed to be a target of transcriptional suppression by the tumor suppressor gene WT1. Mutations within PAX2 have been shown to result in optic nerve colobomas and renal hypoplasia. Alternative splicing of this gene results in multiple transcript variants.</p> <p>Synonyms: Paired box 2 antibody Paired box gene 2 antibody paired box homeotic gene 2 antibody paired box protein 2 antibody Paired box protein Pax 2 antibody Paired box protein Pax-2 antibody Paired box protein Pax2 antibody Pax 2 antibody</p>
Gene ID:	5076
UniProt:	Q02962
Pathways:	Carbohydrate Homeostasis , Stem Cell Maintenance , Tube Formation

Application Details

Application Notes:	<p>WB: Concentration: 0.1-0.5 µg/mL, Tested Species: Rat, Predicted Species: Human</p> <p>IHC-P: Concentration: 0.5-1 µg/mL, Tested Species: Human, Mouse, Rat, Epitope Retrieval by Heat: Boiling the paraffin sections in 10 mM citrate buffer, pH 6.0, for 20 mins is required for the staining of formalin/paraffin sections.</p> <p>Notes: Tested Species: Species with positive results. Predicted Species: Species predicted to be fit for the product based on sequence similarities. Other applications have not been tested.</p> <p>Optimal dilutions should be determined by end users.</p>
Comment:	Antibody can be supported by chemiluminescence kit ABIN921124 in WB, supported by ABIN921231 in IHC(P).
Restrictions:	For Research Use only

Handling

Format:	Lyophilized
Reconstitution:	Add 0.2 mL of distilled water will yield a concentration of 500 µg/mL.

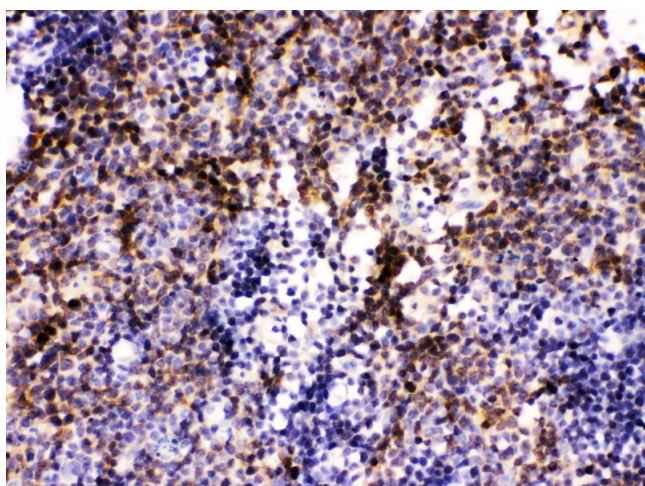
Handling

Concentration:	500 µg/mL
Buffer:	Each vial contains 5 mg BSA, 0.9 mg NaCl, 0.2 mg Na ₂ HPO ₄ , 0.05 mg Sodium azide.
Preservative:	Sodium azide
Precaution of Use:	This product contains Sodium azide: a POISONOUS AND HAZARDOUS SUBSTANCE which should be handled by trained staff only.
Handling Advice:	Avoid repeated freezing and thawing.
Storage:	4 °C/-20 °C
Storage Comment:	At -20°C for one year. After reconstitution, at 4°C for one month. It can also be aliquotted and stored frozen at -20 °C for a longer time. Avoid repeated freezing and thawing.

Publications

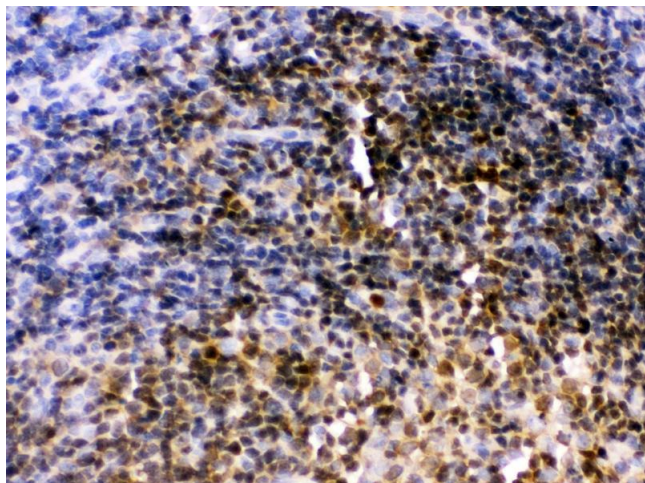
Product cited in:	Yang, He, Peng, Zhong, Deng, Yu, Guan, Zuo, Xu: "Matrine suppresses the migration and invasion of NSCLC cells by inhibiting PAX2-induced epithelial-mesenchymal transition." in: OncoTargets and therapy , Vol. 10, pp. 5209-5217, (2017) (PubMed).
-------------------	--

Images



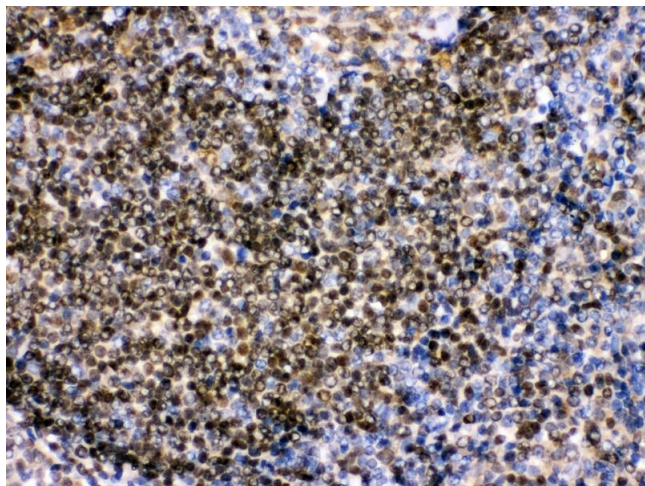
Immunohistochemistry

Image 1. Anti- Pax2 Picoband antibody, IHC(P) IHC(P):
Mouse Lymphaden Tissue



Immunohistochemistry

Image 2. Anti- Pax2 Picoband antibody,IHC(P) IHC(P): Rat Lymphaden Tissue



Immunohistochemistry

Image 3. Anti- Pax2 Picoband antibody,IHC(P) IHC(P): Human Tonsil Tissue

Please check the [product details page](#) for more images. Overall 4 images are available for ABIN3043591.