

Datasheet for ABIN3043607
anti-PKLR antibody (C-Term)



[Go to Product page](#)

2 Images

Overview

Quantity:	100 µg
Target:	PKLR
Binding Specificity:	AA 522-552, C-Term
Reactivity:	Human, Mouse, Rat
Host:	Rabbit
Clonality:	Polyclonal
Application:	Western Blotting (WB), Immunohistochemistry (Paraffin-embedded Sections) (IHC (p))

Product Details

Purpose:	Rabbit IgG polyclonal antibody for Pyruvate kinase PKLR(PKLR) detection. Tested with WB, IHC-P in Human,Mouse,Rat.
Immunogen:	A synthetic peptide corresponding to a sequence at the C-terminus of human PKLR (522-552aa EAIWADDVDRRVQFGIESGKLRGFLRVGDLV), different from the related mouse sequence by one amino acid, and identical to the rat sequence.
Sequence:	EAIWADDVDR RVQFGIESGK LRGFLRVGDL V
Isotype:	IgG
Cross-Reactivity (Details):	No cross reactivity with other proteins.
Characteristics:	Rabbit IgG polyclonal antibody for Pyruvate kinase PKLR(PKLR) detection. Tested with WB, IHC-P in Human,Mouse,Rat. Gene Name: pyruvate kinase, liver and RBC Protein Name: Pyruvate kinase PKLR

Product Details

Purification: Immunogen affinity purified.

Target Details

Target: PKLR

Alternative Name: PKLR ([PKLR Products](#))

Background: Pyruvate kinase isozymes R/L is an enzyme that in humans is encoded by the PKLR gene. It is mapped to 1q21. The protein encoded by this gene is a pyruvate kinase that catalyzes the transphosphorylation of phosphoenolpyruvate into pyruvate and ATP, which is the rate-limiting step of glycolysis. Defects in this enzyme, due to gene mutations or genetic variations, are the common cause of chronic hereditary nonspherocytic hemolytic anemia (CNSHA or HNSHA). Multiple transcript variants encoding different isoforms have been found for this gene.

Synonyms: EC 2.7.1.40 antibody|KPYPYR_HUMAN antibody|L-PK antibody|Pk-1 antibody|PK1 antibody|PKL antibody|PKlg antibody|PKlr antibody|PKR antibody|PKRL antibody|Pyruvate kinase 1 antibody|Pyruvate kinase isozymes R/L antibody|Pyruvate kinase liver and blood cell antibody|Pyruvate kinase liver and RBC antibody|Pyruvate kinase liver and red blood cell antibody|Pyruvate kinase liver type antibody|Pyruvate kinase type L antibody|Pyruvate kinase, red cell type antibody|R type/L type pyruvate kinase antibody|R-PK antibody|R-type/L-type pyruvate kinase antibody|Red cell/liver pyruvate kinase antibody|RPK antibody

Gene ID: 5313

UniProt: [P30613](#)

Pathways: [Ribonucleoside Biosynthetic Process](#)

Application Details

Application Notes: WB: Concentration: 0.1-0.5 µg/mL, Tested Species: Mouse, Rat, Predicted Species: Human
IHC-P: Concentration: 0.5-1 µg/mL, Tested Species: Human, Epitope Retrieval by Heat: Boiling the paraffin sections in 10 mM citrate buffer, pH 6.0, for 20 mins is required for the staining of formalin/paraffin sections.
Notes: Tested Species: Species with positive results. Predicted Species: Species predicted to be fit for the product based on sequence similarities. Other applications have not been tested.
Optimal dilutions should be determined by end users.

Comment: Antibody can be supported by chemiluminescence kit ABIN921124 in WB, supported by ABIN921231 in IHC(P).

Application Details

Restrictions: For Research Use only

Handling

Format: Lyophilized

Reconstitution: Add 0.2 mL of distilled water will yield a concentration of 500 µg/mL.

Concentration: 500 µg/mL

Buffer: Each vial contains 5 mg BSA, 0.9 mg NaCl, 0.2 mg Na₂HPO₄, 0.05 mg Sodium azide.

Preservative: Sodium azide

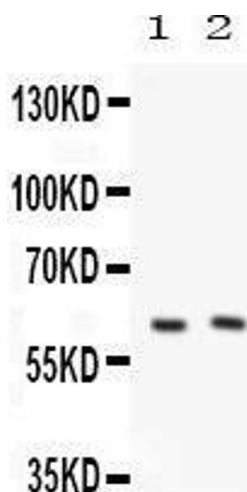
Precaution of Use: This product contains Sodium azide: a POISONOUS AND HAZARDOUS SUBSTANCE which should be handled by trained staff only.

Handling Advice: Avoid repeated freezing and thawing.

Storage: 4 °C/-20 °C

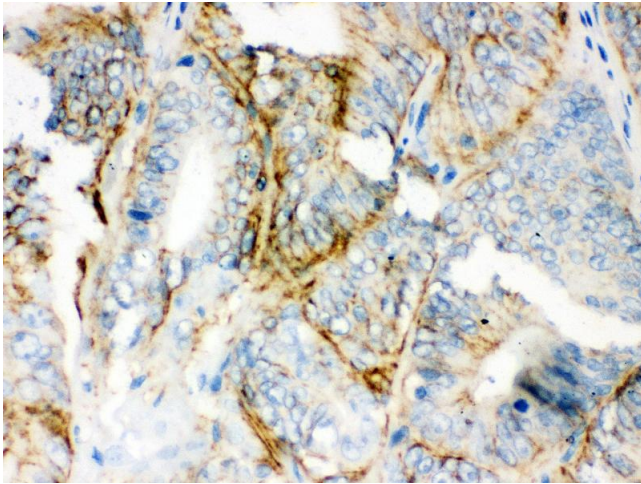
Storage Comment: At -20°C for one year. After reconstitution, at 4°C for one month.
It can also be aliquotted and stored frozen at -20 °C for a longer time. Avoid repeated freezing and thawing.

Images



Western Blotting

Image 1. Anti-PKLR Picoband antibody, Western blotting All lanes: Anti PKLR at 0.5ug/ml Lane 1: Rat Liver Tissue Lysate at 50ug Lane 2: Mouse Liver Tissue Lysate at 50ug Predicted bind size: 62KD Observed bind size: 62KD



Immunohistochemistry

Image 2. Anti-PKLR Picoband antibody, IHC(P) IHC(P):
Human Intestinal Cancer Tissue