

Datasheet for ABIN3043610
anti-MAPK13 antibody (C-Term)[Go to Product page](#)

4 Images

Overview

Quantity:	100 µg
Target:	MAPK13
Binding Specificity:	AA 332-365, C-Term
Reactivity:	Human, Mouse, Rat
Host:	Rabbit
Clonality:	Polyclonal
Conjugate:	This MAPK13 antibody is un-conjugated
Application:	Western Blotting (WB), Immunohistochemistry (Paraffin-embedded Sections) (IHC (p))

Product Details

Purpose:	Rabbit IgG polyclonal antibody for Mitogen-activated protein kinase 13(MAPK13) detection. Tested with WB, IHC-P in Human,Mouse,Rat.
Immunogen:	A synthetic peptide corresponding to a sequence at the C-terminus of human SAPK4 (332-365aa KLTVDWEWKQHIYKEIVNFSP IARKDSRRRSGMKL), different from the related mouse sequence by two amino acids, and from the related rat sequence by three amino acids.
Sequence:	KLTVDWEWKQHIYKEIVNFSP IARKDSRRRS GMKL
Isotype:	IgG
Cross-Reactivity (Details):	No cross reactivity with other proteins.
Characteristics:	Rabbit IgG polyclonal antibody for Mitogen-activated protein kinase 13(MAPK13) detection. Tested with WB, IHC-P in Human,Mouse,Rat. Gene Name: mitogen-activated protein kinase 13

Product Details

Protein Name: Mitogen-activated protein kinase 13

Purification: Immunogen affinity purified.

Target Details

Target: MAPK13

Alternative Name: MAPK13 ([MAPK13 Products](#))

Background: MAPK13 (Mitogen-Activated Protein Kinase 13), also called p38-DELTA or Stress-Activated Protein Kinase 4(SAPK4), is an enzyme that in humans is encoded by the MAPK13 gene. The protein encoded by this gene is a member of the MAP kinase family. MAP kinases act as an integration point for multiple biochemical signals, and are involved in a wide variety of cellular processes such as proliferation, differentiation, transcription regulation and development. This kinase is closely related to p38 MAP kinase, both of which can be activated by proinflammatory cytokines and cellular stress. MAP kinase kinases 3, and 6 can phosphorylate and activate this kinase. Transcription factor ATF2, and microtubule dynamics regulator stathmin have been shown to be the substrates of this kinase.

Synonyms: MAP kinase 13 antibody|MAP kinase p38 delta antibody|MAPK 13 antibody|MAPK-13 antibody| Mapk13 antibody|MGC99536 antibody|Mitogen activated protein kinase 13 antibody|Mitogen-activated protein kinase 13 antibody|Mitogen-activated protein kinase p38 delta antibody| MK13_HUMAN antibody|OTTHUMP00000016282 antibody|OTTHUMP00000016283 antibody|p38 delta antibody|P38delta antibody|PRKM13 antibody|SAPK 4 antibody|SAPK4 antibody|Stress activated protein kinase 4 antibody|Stress-activated protein kinase 4 antibody

Gene ID: 5603

UniProt: [O15264](#)

Pathways: [MAPK Signaling](#), [Neurotrophin Signaling Pathway](#), [Hepatitis C](#), [BCR Signaling](#), [S100 Proteins](#)

Application Details

Application Notes: WB: Concentration: 0.1-0.5 µg/mL, Tested Species: Human, Rat
IHC-P: Concentration: 0.5-1 µg/mL, Tested Species: Human, Mouse, Rat, Epitope Retrieval by Heat: Boiling the paraffin sections in 10 mM citrate buffer, pH 6.0, for 20 mins is required for the staining of formalin/paraffin sections.
Notes: Tested Species: Species with positive results. Other applications have not been tested.

Application Details

Optimal dilutions should be determined by end users.

Comment: Antibody can be supported by chemiluminescence kit ABIN921124 in WB, supported by ABIN921231 in IHC(P).

Restrictions: For Research Use only

Handling

Format: Lyophilized

Reconstitution: Add 0.2 mL of distilled water will yield a concentration of 500 µg/mL.

Concentration: 500 µg/mL

Buffer: Each vial contains 5 mg BSA, 0.9 mg NaCl, 0.2 mg Na₂HPO₄, 0.05 mg Sodium azide.

Preservative: Sodium azide

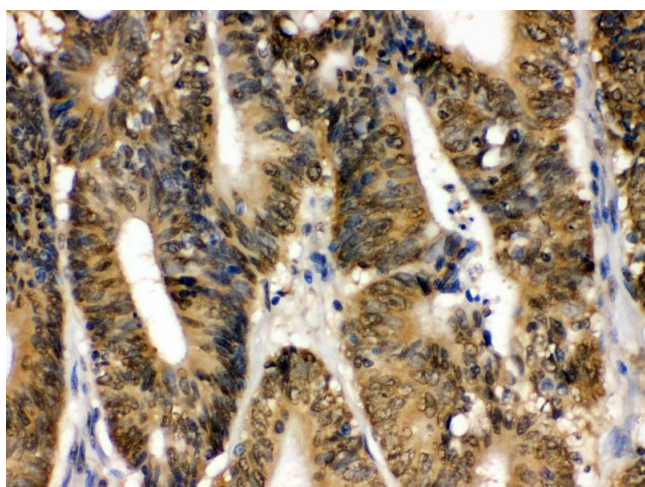
Precaution of Use: This product contains Sodium azide: a POISONOUS AND HAZARDOUS SUBSTANCE which should be handled by trained staff only.

Handling Advice: Avoid repeated freezing and thawing.

Storage: 4 °C/-20 °C

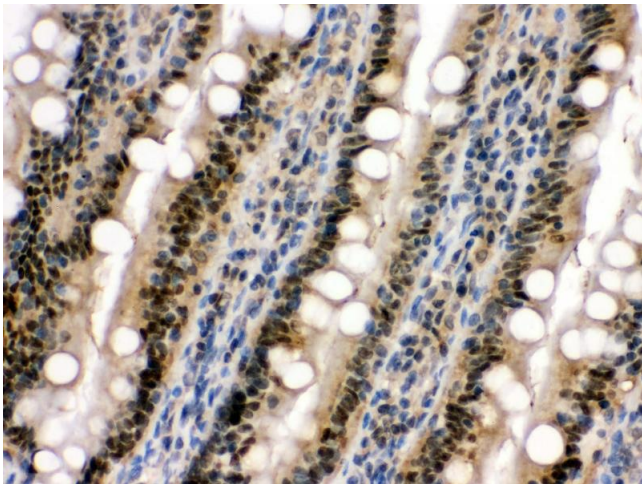
Storage Comment: At -20°C for one year. After reconstitution, at 4°C for one month.
It can also be aliquotted and stored frozen at -20 °C for a longer time. Avoid repeated freezing and thawing.

Images



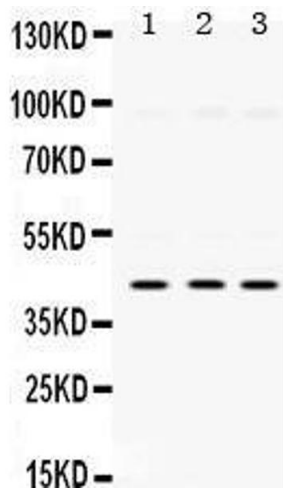
Immunohistochemistry

Image 1. IHC(P): Human Intestinal Cancer Tissue



Immunohistochemistry (Paraffin-embedded Sections)

Image 2.



Western Blotting

Image 3.

Please check the [product details page](#) for more images. Overall 4 images are available for ABIN3043610.