

Datasheet for ABIN3043611
anti-MAPK6 antibody (AA 520-721)



[Go to Product page](#)

2 Images

Overview

Quantity:	100 µg
Target:	MAPK6
Binding Specificity:	AA 520-721
Reactivity:	Human, Mouse, Rat
Host:	Rabbit
Clonality:	Polyclonal
Conjugate:	This MAPK6 antibody is un-conjugated
Application:	Western Blotting (WB), Immunohistochemistry (IHC)

Product Details

Purpose:	Anti-MAPK6 Antibody Picoband®
Immunogen:	E.coli-derived human MAPK6 recombinant protein (Position: E520-N721). Human MAPK6 shares 86.2% and 82.8% amino acid (aa) sequence identity with mouse and rat MAPK6, respectively.
Isotype:	IgG
Cross-Reactivity (Details):	No cross-reactivity with other proteins
Characteristics:	Anti-MAPK6 Antibody Picoband® (ABIN3043611). Tested in IHC, WB applications. This antibody reacts with Human, Mouse, Rat. The brand Picoband indicates this is a premium antibody that guarantees superior quality, high affinity, and strong signals with minimal background in Western blot applications. Only our best-performing antibodies are designated as Picoband, ensuring unmatched performance.

Product Details

Purification: Immunogen affinity purified.

Target Details

Target: MAPK6

Alternative Name: MAPK6 ([MAPK6 Products](#))

Background: Synonyms: Mitogen-activated protein kinase 6, MAP kinase 6, MAPK 6, 2.7.11.24, Extracellular signal-regulated kinase 3, ERK-3, MAP kinase isoform p97, p97-MAPK, MAPK6, ERK3, PRKM6, Tissue Specificity: Highest expression in the skeletal muscle, followed by the brain. Also found in heart, placenta, lung, liver, pancreas, kidney and skin fibroblasts.

Background: Mitogen-activated protein kinase 6 is an enzyme that in humans is encoded by the MAPK6 gene. It is mapped to 15q21. The protein encoded by this gene is a member of the Ser/Thr protein kinase family, and is most closely related to mitogen-activated protein kinases (MAP kinases). MAP kinases also known as extracellular signal-regulated kinases (ERKs), are activated through protein phosphorylation cascades and act as integration points for multiple biochemical signals. This kinase is localized in the nucleus, and has been reported to be activated in fibroblasts upon treatment with serum or phorbol esters.

Molecular Weight: 100 kDa

Gene ID: 5597

UniProt: [Q16659](#)

Pathways: [MAPK Signaling](#), [Neurotrophin Signaling Pathway](#), [Regulation of Muscle Cell Differentiation](#), [Hepatitis C](#)

Application Details

Application Notes: Immunohistochemistry (Paraffin-embedded Section), 0.5-1 µg/mL, Human
Western blot, 0.1-0.5 µg/mL, Human, Mouse, Rat

1. "Entrez Gene: MAPK6 mitogen-activated protein kinase 6". 2. Cheng M, Boulton TG, Cobb MH (1996). "ERK3 is a constitutively nuclear protein kinase". J. Biol. Chem. 271 (15): 8951-8958. 3. Meloche S, Beatty BG, Pellerin J (Dec 1996). "Primary structure, expression and chromosomal locus of a human homolog of rat ERK3". Oncogene 13 (7): 1575-9.

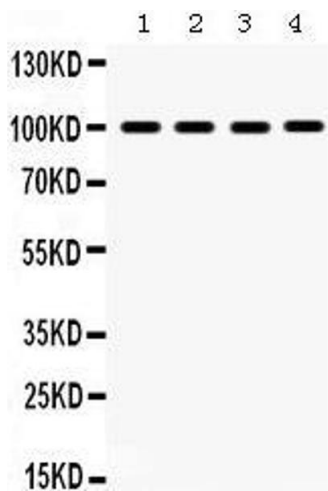
Comment: Antibody can be supported by chemiluminescence kit ABIN921124 in WB, supported by ABIN921231 in IHC(P).

Restrictions: For Research Use only

Handling

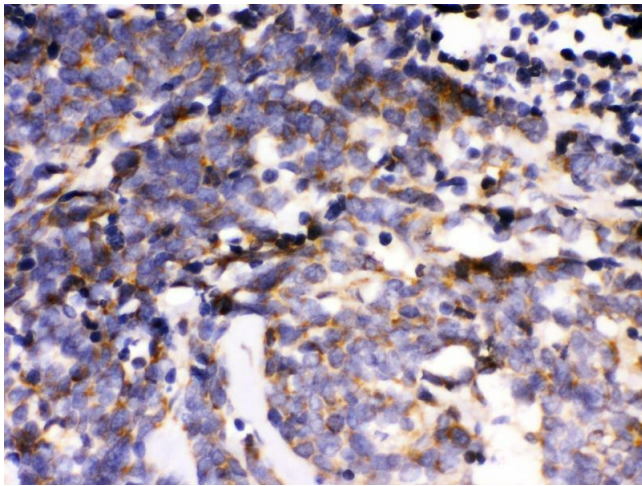
Format:	Lyophilized
Reconstitution:	Add 0.2 mL of distilled water will yield a concentration of 500 µg/mL.
Concentration:	500 µg/mL
Buffer:	Each vial contains 5 mg BSA, 0.9 mg NaCl, 0.2 mg Na2HPO4, 0.05 mg Sodium azide.
Preservative:	Sodium azide
Precaution of Use:	This product contains Sodium azide: a POISONOUS AND HAZARDOUS SUBSTANCE which should be handled by trained staff only.
Handling Advice:	Avoid repeated freezing and thawing.
Storage:	4 °C,-20 °C
Storage Comment:	Store at -20°C for one year from date of receipt. After reconstitution, at 4°C for one month. It can also be aliquotted and stored frozen at -20°C for six months. Avoid repeated freeze-thaw cycles.

Images



Western Blotting

Image 1.



Immunohistochemistry

Image 2. Anti- MAPK6 Picoband antibody, IHC(P) IHC(P):
Human Lung Cancer Tissue