



[Go to Product page](#)

Datasheet for ABIN3043613  
**anti-MBD2 antibody (AA 159-411)**

2 Images

### Overview

Quantity:	100 µg
Target:	MBD2
Binding Specificity:	AA 159-411
Reactivity:	Human
Host:	Rabbit
Clonality:	Polyclonal
Application:	Western Blotting (WB)

### Product Details

Purpose:	Rabbit IgG polyclonal antibody for Methyl-CpG-binding domain protein 2(MBD2) detection. Tested with WB in Human.
Immunogen:	E.coli-derived human MBD2 recombinant protein (Position: W159-A411). Human MBD2 shares 98% amino acid (aa) sequence identity with mouse MBD2.
Isotype:	IgG
Cross-Reactivity (Details):	No cross reactivity with other proteins.
Characteristics:	Rabbit IgG polyclonal antibody for Methyl-CpG-binding domain protein 2(MBD2) detection. Tested with WB in Human. Gene Name: methyl-CpG binding domain protein 2 Protein Name: Methyl-CpG-binding domain protein 2
Purification:	Immunogen affinity purified.

## Target Details

---

Target:	MBD2
Alternative Name:	MBD2 ( <a href="#">MBD2 Products</a> )
Background:	<p>Methyl-CpG-binding domain protein 2 is a protein that in humans is encoded by the MBD2 gene. It is mapped to 18q21.2. Human proteins MECP2, MBD1, MBD2, MBD3, and MBD4 comprise a family of nuclear proteins related by the presence in each of a methyl-CpG-binding domain (MBD). Each of these proteins, with the exception of MBD3, is capable of binding specifically to methylated DNA. DNA methylation is the major modification of eukaryotic genomes and plays an essential role in mammalian development. The protein encoded by this gene may function as a mediator of the biological consequences of the methylation signal. It is also reported that this protein functions as a demethylase to activate transcription, as DNA methylation causes gene silencing.</p> <p>Synonyms: DEMETHYLASE antibody DKFZp586O0821 antibody DMTase antibody MBD 2 antibody Mbd2 antibody MBD2_HUMAN antibody MBD2a antibody Methyl CpG binding domain protein 2 antibody Methyl CpG binding protein MBD2 antibody Methyl-CpG-binding domain protein 2 antibody Methyl-CpG-binding protein MBD2 antibody NY CO 41 antibody</p>
Gene ID:	8932
Pathways:	<a href="#">Chromatin Binding</a>

## Application Details

---

Application Notes:	<p>WB: Concentration: 0.1-0.5 µg/mL, Tested Species: Human, The detection limit for MBD2 is approximately 0.2 ng/lane under reducing conditions.</p> <p>Notes: Tested Species: Species with positive results.</p> <p>Other applications have not been tested. Optimal dilutions should be determined by end users.</p>
Comment:	Antibody can be supported by chemiluminescence kit ABIN921124 in WB.
Restrictions:	For Research Use only

## Handling

---

Format:	Lyophilized
Reconstitution:	Add 0.2 mL of distilled water will yield a concentration of 500 µg/mL.
Concentration:	500 µg/mL
Buffer:	Each vial contains 5 mg BSA, 0.9 mg NaCl, 0.2 mg Na2HPO4, 0.05 mg Sodium azide.

## Handling

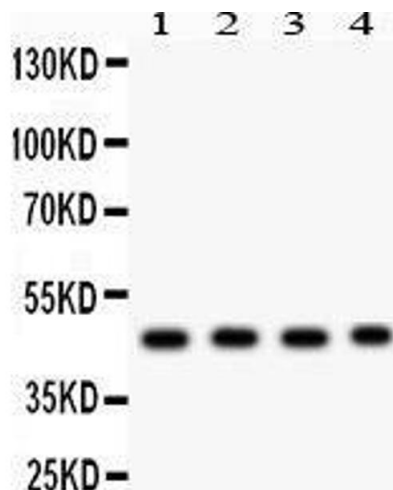
Preservative:	Sodium azide
Precaution of Use:	This product contains Sodium azide: a POISONOUS AND HAZARDOUS SUBSTANCE which should be handled by trained staff only.
Handling Advice:	Avoid repeated freezing and thawing.
Storage:	4 °C/-20 °C
Storage Comment:	At -20°C for one year. After reconstitution, at 4°C for one month. It can also be aliquotted and stored frozen at -20 °C for a longer time. Avoid repeated freezing and thawing.

## Images



### Western Blotting

**Image 1.** Anti- MBD2 antibody, Western blotting All lanes: Anti MBD2 at 0.5ug/ml IWB: Recombinant Human MBD2 Protein 0.5ng Predicted bind size: 40KD Observed bind size: 40KD



### Western Blotting

**Image 2.** Anti- MBD2 antibody, Western blotting All lanes: Anti MBD2 at 0.5ug/ml Lane 1: SGC Whole Cell Lysate at 40ug Lane 2: HELA Whole Cell Lysate at 40ug Lane 3: JURKAT Whole Cell Lysate at 40ug Lane 4: K562 Whole Cell Lysate at 40ug Predicted bind size: 47KD Observed bind size: 47KD