

Datasheet for ABIN3043614
anti-TFPI2 antibody (Middle Region)[Go to Product page](#)

2 Images

Overview

Quantity:	100 µg
Target:	TFPI2
Binding Specificity:	AA 170-186, Middle Region
Reactivity:	Human
Host:	Rabbit
Clonality:	Polyclonal
Conjugate:	This TFPI2 antibody is un-conjugated
Application:	Western Blotting (WB), Immunohistochemistry (Paraffin-embedded Sections) (IHC (p))

Product Details

Purpose:	Rabbit IgG polyclonal antibody for Tissue factor pathway inhibitor 2(TFPI2) detection. Tested with WB, IHC-P in Human.
Immunogen:	A synthetic peptide corresponding to a sequence in the middle region of human TFPI2(170-186aa NVTRYFNPRTCDAF).
Sequence:	NVTRYFNPRTCDAF
Isotype:	IgG
Cross-Reactivity (Details):	No cross reactivity with other proteins.
Characteristics:	<p>Rabbit IgG polyclonal antibody for Tissue factor pathway inhibitor 2(TFPI2) detection. Tested with WB, IHC-P in Human.</p> <p>Gene Name: tissue factor pathway inhibitor 2</p> <p>Protein Name: Tissue factor pathway inhibitor 2(TFPI-2)</p>

Product Details

Purification: Immunogen affinity purified.

Target Details

Target: TFPI2

Alternative Name: TFPI2 ([TFPI2 Products](#))

Background: Tissue factor pathway inhibitor 2, also known as TFPI2, is a human gene which is located at 7q22. It is an important regulator of the extrinsic pathway of blood coagulation through its ability to inhibit factor Xa and factor VIIa-tissue factor activity. After a 22-residue signal peptide, the mature TFPI2 protein contains 213 amino acids with 18 cysteines and 2 canonical N-linked glycosylation sites. The purified recombinant TFPI2 strongly inhibited the amidolytic activities of trypsin and the factor VIIa-tissue factor complex. The latter inhibition was markedly enhanced in the presence of heparin. Mouse TFPI2 mRNA is highly expressed in developing mouse placenta, as in human. And there are also high transcript levels in adult mouse liver and kidney.

Synonyms: Placental protein 5 antibody|PP5 antibody|TFPI 2 antibody|TFPI-2 antibody|TFPI2 antibody|TFPI2 PEN antibody|TFPI2_HUMAN antibody|Tissue factor pathway inhibitor 2 antibody

UniProt: [P48307](#)

Application Details

Application Notes: WB: Concentration: 0.1-0.5 µg/mL, Tested Species: Human
IHC-P: Concentration: 0.5-1 µg/mL, Tested Species: Human, Epitope Retrieval by Heat: Boiling the paraffin sections in 10 mM citrate buffer, pH 6.0, for 20 mins is required for the staining of formalin/paraffin sections.
Notes: Tested Species: Species with positive results. Predicted Species: Species predicted to be fit for the product based on sequence similarities. Other applications have not been tested.
Optimal dilutions should be determined by end users.

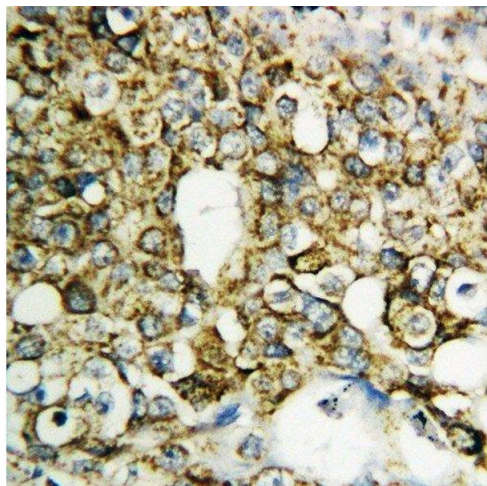
Comment: Antibody can be supported by chemiluminescence kit ABIN921124 in WB, supported by ABIN921231 in IHC(P).

Restrictions: For Research Use only

Handling

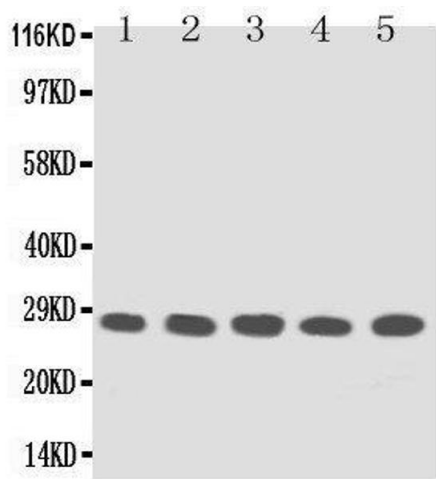
Format:	Lyophilized
Reconstitution:	Add 0.2 mL of distilled water will yield a concentration of 500 µg/mL.
Concentration:	500 µg/mL
Buffer:	Each vial contains 5 mg BSA, 0.9 mg NaCl, 0.2 mg Na ₂ HPO ₄ , 0.05 mg Thimerosal, 0.05 mg Sodium azide.
Preservative:	Thimerosal (Merthiolate), Sodium azide
Precaution of Use:	This product contains Sodium azide and Thimerosal (Merthiolate): POISONOUS AND HAZARDOUS SUBSTANCES which should be handled by trained staff only.
Handling Advice:	Avoid repeated freezing and thawing.
Storage:	4 °C/-20 °C
Storage Comment:	At -20°C for one year. After reconstitution, at 4°C for one month. It can also be aliquotted and stored frozen at -20 °C for a longer time. Avoid repeated freezing and thawing.

Validation report #300030 for Immunohistochemistry (IHC)



Immunohistochemistry

Image 1. Anti-TFPI2 antibody, IHC(P) IHC(P): Human Mammary Cancer Tissue



Western Blotting

Image 2. Anti-TFPI2 antibody, Western blotting Lane 1: MM453 Cell Lysate Lane 2: MM231 Cell Lysate Lane 3: HELA Cell Lysate Lane 4: Cell Lysate Lane 5: JURKAT Cell Lysate