

Datasheet for ABIN3043687
anti-Lamin B1 antibody (C-Term)

4 Images

18 Publications



[Go to Product page](#)

Overview

Quantity:	100 µg
Target:	Lamin B1 (LMNB1)
Binding Specificity:	AA 570-586, C-Term
Reactivity:	Human, Mouse, Rat
Host:	Rabbit
Clonality:	Polyclonal
Conjugate:	This Lamin B1 antibody is un-conjugated
Application:	Western Blotting (WB), Immunohistochemistry (Paraffin-embedded Sections) (IHC (p)), Immunocytochemistry (ICC), Immunohistochemistry (Frozen Sections) (IHC (fro))

Product Details

Purpose:	Rabbit IgG polyclonal antibody for Lamin-B1(LMNB1) detection. Tested with WB, IHC-P, IHC-F, ICC in Human,Mouse,Rat.
Immunogen:	A synthetic peptide corresponding to a sequence at the C-terminus of human Lamin B1(570-586aa FHQQGTPRASNRSCAIM), different from the related rat sequence by one amino acid, and from the related mouse sequence by three amino acids.
Sequence:	FHQQGTPRAS NRSCAIM
Isotype:	IgG
Cross-Reactivity (Details):	No cross reactivity with other proteins.
Characteristics:	Rabbit IgG polyclonal antibody for Lamin-B1(LMNB1) detection. Tested with WB, IHC-P, IHC-F, ICC in Human,Mouse,Rat.

Product Details

Gene Name: lamin B1

Protein Name: Lamin-B1

Purification: Immunogen affinity purified.

Target Details

Target: Lamin B1 (LMNB1)

Alternative Name: LMNB1 ([LMNB1 Products](#))

Background: Lamin-B1 is a protein that in humans is encoded by the LMNB1 gene. The nuclear lamina consists of a two-dimensional matrix of proteins located next to the inner nuclear membrane. The lamin family of proteins make up the matrix and are highly conserved in evolution. During mitosis, the lamina matrix is reversibly disassembled as the lamin proteins are phosphorylated. Lamin proteins are thought to be involved in nuclear stability, chromatin structure and gene expression. Vertebrate lamins consist of two types, A and B. This gene encodes one of the two B type proteins, B1.

Synonyms: ADLD antibody|lamin B1 antibody|Lamin-B1 antibody|LMN antibody|LMN2 antibody|LMNB antibody|Lmnb1 antibody|LMNB1_HUMAN antibody|MGC111419 antibody|OTTHUMP00000159218 antibody

UniProt: [P20700](#)

Pathways: [Apoptosis, Caspase Cascade in Apoptosis](#)

Application Details

Application Notes: WB: Concentration: 0.1-0.5 µg/mL, Tested Species: Human, Mouse, Rat
IHC-P: Concentration: 0.5-1 µg/mL, Tested Species: Human, Rat, Epitope Retrieval by Heat: Boiling the paraffin sections in 10 mM citrate buffer, pH 6.0, for 20 mins is required for the staining of formalin/paraffin sections.
IHC-F: Concentration: 0.5-1 µg/mL, Tested Species: Rat, Predicted Species: Human
ICC: Concentration: 0.5-1 µg/mL, Tested Species: Human, Predicted Species: Rat
Notes: Tested Species: Species with positive results. Predicted Species: Species predicted to be fit for the product based on sequence similarities. Other applications have not been tested.
Optimal dilutions should be determined by end users.

Comment: Antibody can be supported by chemiluminescence kit ABIN921124 in WB, supported by ABIN921231 in IHC(P), IHC(F) and ICC.

Application Details

Restrictions: For Research Use only

Handling

Format: Lyophilized

Reconstitution: Add 0.2 mL of distilled water will yield a concentration of 500 µg/mL.

Concentration: 500 µg/mL

Buffer: Each vial contains 5 mg BSA, 0.9 mg NaCl, 0.2 mg Na₂HPO₄, 0.05 mg Thimerosal, 0.05 mg Sodium azide.

Preservative: Thimerosal (Merthiolate), Sodium azide

Precaution of Use: This product contains Sodium azide and Thimerosal (Merthiolate): POISONOUS AND HAZARDOUS SUBSTANCES which should be handled by trained staff only.

Handling Advice: Avoid repeated freezing and thawing.

Storage: 4 °C/-20 °C

Storage Comment: At -20°C for one year. After reconstitution, at 4°C for one month.
It can also be aliquotted and stored frozen at -20 °C for a longer time. Avoid repeated freezing and thawing.

Publications

Product cited in: Chen, Luo, Lin, Kuang, Song: "Simulated microgravity inhibits osteogenic differentiation of mesenchymal stem cells via depolymerizing F-actin to impede TAZ nuclear translocation." in: **Scientific reports**, Vol. 6, pp. 30322, (2018) ([PubMed](#)).

Wang, Wu, Hu, Weng, Wang, Chen, Luo, Wang, Ning: "Intracellular hepatitis B virus increases hepatic cholesterol deposition in alcoholic fatty liver via hepatitis B core protein." in: **Journal of lipid research**, Vol. 59, Issue 1, pp. 58-68, (2018) ([PubMed](#)).

Zhou, Li, Shi, Mao, Liu, Chang, Gan, Kuang, Du: "Protective Effect of Klotho against Ischemic Brain Injury Is Associated with Inhibition of RIG-I/NF-κB Signaling." in: **Frontiers in pharmacology**, Vol. 8, pp. 950, (2018) ([PubMed](#)).

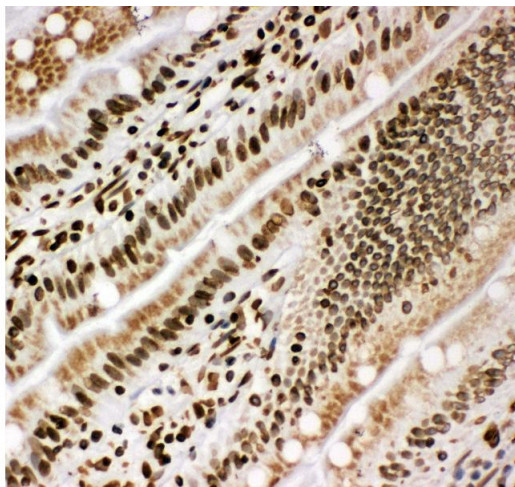
Timoshevskiy, Herdy, Keinath, Smith: "Cellular and Molecular Features of Developmentally Programmed Genome Rearrangement in a Vertebrate (Sea Lamprey: *Petromyzon marinus*)." in:

PLoS genetics, Vol. 12, Issue 6, pp. e1006103, (2017) ([PubMed](#)).

Shen, Sun, Xia, Meng, Lei, Zhao, Tang, Xue, Chen: "Overexpression of DJ-1 reduces oxidative stress and attenuates hypoxia/reoxygenation injury in NRK-52E cells exposed to high glucose." in: **International journal of molecular medicine**, Vol. 38, Issue 3, pp. 729-36, (2017) ([PubMed](#)).

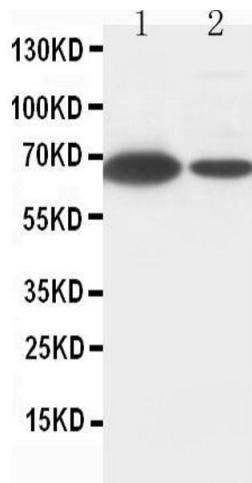
There are more publications referencing this product on: [Product page](#)

Images



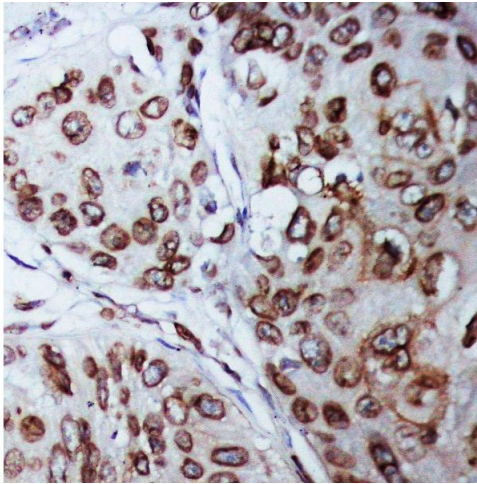
Immunohistochemistry

Image 1. Anti-Lamin B1 antibody, IHC(F) IHC(F): Rat Intestine Tissue



Western Blotting

Image 2. Anti-Lamin B1 antibody, Western blotting Lane 1: MCF-7 Cell Lysate Lane 2: HELA Cell Lysate



Immunohistochemistry

Image 3. Anti-Lamin B1 antibody, IHC(P) IHC(P): Human Mammary Cancer Tissue

Please check the [product details page](#) for more images. Overall 4 images are available for ABIN3043687.