

Datasheet for ABIN3043695
anti-Lamin A/C antibody (C-Term)

4 Images

3 Publications

[Go to Product page](#)

Overview

Quantity:	100 µg
Target:	Lamin A/C (LMNA)
Binding Specificity:	AA 455-469, C-Term
Reactivity:	Human, Mouse, Rat
Host:	Rabbit
Clonality:	Polyclonal
Conjugate:	This Lamin A/C antibody is un-conjugated
Application:	Western Blotting (WB), Immunohistochemistry (Paraffin-embedded Sections) (IHC (p)), Immunocytochemistry (ICC)

Product Details

Purpose:	Rabbit IgG polyclonal antibody for Prelamin-A/C(LMNA) detection. Tested with WB, IHC-P, ICC in Human,Mouse,Rat.
Immunogen:	A synthetic peptide corresponding to a sequence at the C-terminus of human Lamin A/C(455-469aa RNKSNEQSMGNWQI), identical to the related rat and mouse sequences.
Sequence:	RNKSNEQSM GNWQI
Isotype:	IgG
Cross-Reactivity (Details):	No cross reactivity with other proteins.
Characteristics:	Rabbit IgG polyclonal antibody for Prelamin-A/C(LMNA) detection. Tested with WB, IHC-P, ICC in Human,Mouse,Rat. Gene Name: lamin A/C

Product Details

Protein Name: Prelamin-A/C

Purification: Immunogen affinity purified.

Target Details

Target: Lamin A/C (LMNA)

Alternative Name: LMNA ([LMNA Products](#))

Background: Lamins are structural protein components of the nuclear lamina, a protein network underlying the inner nuclear membrane that determines nuclear shape and size. There are three types of lamins, A,B and C. The lamin A/C(LMNA) gene contains 12 exons. Alternative splicing within exon 10 gives rise to two different mRNAs that code for pre-lamin A and lamin C. Lamin A/C mapped to 1q21.2-q21.3 and mutations in this gene cause a variety of human diseases including Emery-Dreifuss muscular dystrophy, dilated cardiomyopathy, and Hutchinson-Gilford progeria syndrome. Lamin A/C deficiency is thus associated with both defective nuclear mechanics and impaired mechanically activated gene transcription.

Synonyms: 70 kDa Lamin antibody|Cardiomyopathy dilated 1A(autosomal dominant) antibody|CDCD1 antibody|CDDC antibody|Charcot Marie Tooth Disease Axonal Type 2B1 antibody|CMD1A antibody|CMT2B1 antibody|EMD2 antibody|FPL antibody|FPLD antibody|FPLD2 antibody|HGPS antibody|IDC antibody|Lamin A/C antibody|Lamin A/C Isoform 1 Precursor antibody|Lamin A/C Isoform 2 antibody|Lamin A/C Isoform 3 antibody|Lamin A/C like 1 antibody|Lamin-A/C antibody|LDP1 antibody|LFP antibody|LGMD1B antibody|Limb girdle muscular dystrophy 1B(autosomal dominant) antibody|LMN 1 antibody|LMN A antibody|LMN C antibody|LMN1 antibody|LMNA antibody|LMNA_HUMAN antibody|LMNC antibody|NY REN 32 antigen antibody|Prelamin A/C antibody|PRO1 antibody|Progeria 1(Hutchinson Gilford Type) antibody|Renal carcinoma antigen NY REN 32 antibody|Renal carcinoma antigen NY-REN-32 antibody|Renal carcinoma antigen NYREN32 antibody

UniProt: [P02545](#)

Pathways: [Apoptosis](#), [Caspase Cascade in Apoptosis](#), [ER-Nucleus Signaling](#), [Protein targeting to Nucleus](#)

Application Details

Application Notes: WB: Concentration: 0.1-0.5 µg/mL, Tested Species: Human, Predicted Species: Mouse, Rat
IHC-P: Concentration: 0.5-1 µg/mL, Tested Species: Human, Mouse, Rat, Epitope Retrieval by Heat: Boiling the paraffin sections in 10 mM citrate buffer, pH 6.0, for 20 mins is required for the

Application Details

staining of formalin/paraffin sections.

ICC: Concentration: 0.5-1 µg/mL, Tested Species: Human, Predicted Species: Mouse, Rat

Notes: Tested Species: Species with positive results. Predicted Species: Species predicted to be fit for the product based on sequence similarities. Other applications have not been tested.

Optimal dilutions should be determined by end users.

Comment: Antibody can be supported by chemiluminescence kit ABIN921124 in WB, supported by ABIN921231 in IHC(P) and ICC.

Restrictions: For Research Use only

Handling

Format: Lyophilized

Reconstitution: Add 0.2 mL of distilled water will yield a concentration of 500 µg/mL.

Concentration: 500 µg/mL

Buffer: Each vial contains 5 mg BSA, 0.9 mg NaCl, 0.2 mg Na₂HPO₄, 0.05 mg Thimerosal, 0.05 mg Sodium azide.

Preservative: Thimerosal (Merthiolate), Sodium azide

Precaution of Use: This product contains Sodium azide and Thimerosal (Merthiolate): POISONOUS AND HAZARDOUS SUBSTANCES which should be handled by trained staff only.

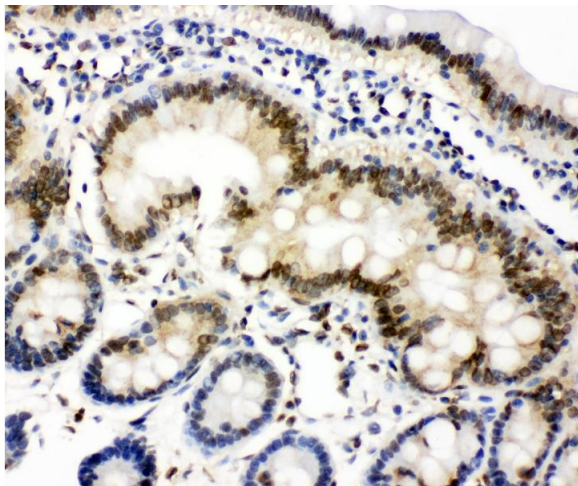
Handling Advice: Avoid repeated freezing and thawing.

Storage: 4 °C/-20 °C

Storage Comment: At -20°C for one year. After reconstitution, at 4°C for one month.
It can also be aliquotted and stored frozen at -20 °C for a longer time. Avoid repeated freezing and thawing.

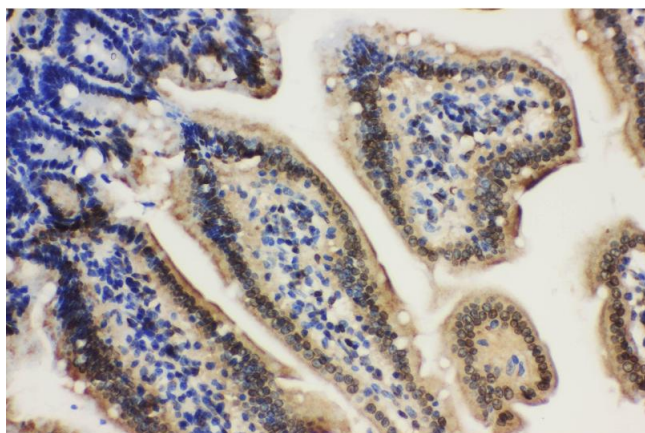
Publications

Product cited in: Li, Zhao, Qi, Wang, Zhang, Li, Qin: "lncRNA Ftx promotes aerobic glycolysis and tumor progression through the PPAR γ pathway in hepatocellular carcinoma." in: **International journal of oncology**, Vol. 53, Issue 2, pp. 551-566, (2018) ([PubMed](#)).



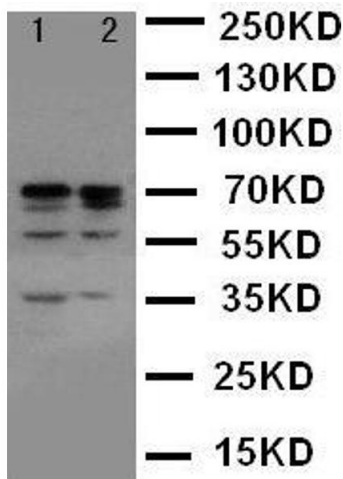
Immunohistochemistry

Image 1. Anti-Lamin A+C antibody, IHC(P) IHC(P): Rat Intestine Tissue



Immunohistochemistry

Image 2. Anti-Lamin A+C antibody, IHC(P) IHC(P): Mouse Intestine Tissue



Western Blotting

Image 3. Anti-Lamin A+C antibody, Western blotting Lane 1: HELA Cell Lysate Lane 2: A431 Cell Lysate

Please check the [product details page](#) for more images. Overall 4 images are available for ABIN3043695.