

Datasheet for ABIN3043723
anti-AFT1 antibody (AA 1-271)



[Go to Product page](#)

3 Images

Overview

Quantity:	100 µg
Target:	AFT1
Binding Specificity:	AA 1-271
Reactivity:	Human, Rat
Host:	Rabbit
Clonality:	Polyclonal
Conjugate:	This AFT1 antibody is un-conjugated
Application:	Western Blotting (WB), Immunohistochemistry (Paraffin-embedded Sections) (IHC (p))

Product Details

Purpose:	Rabbit IgG polyclonal antibody for Cyclic AMP-dependent transcription factor ATF-1(ATF1) detection. Tested with WB, IHC-P in Human,Rat.
Immunogen:	E.coli-derived human ATF1 recombinant protein (Position: M1-V271). Human ATF1 shares 91% amino acid (aa) sequence identity with mouse ATF1.
Isotype:	IgG
Cross-Reactivity (Details):	No cross reactivity with other proteins.
Characteristics:	<p>Rabbit IgG polyclonal antibody for Cyclic AMP-dependent transcription factor ATF-1(ATF1) detection. Tested with WB, IHC-P in Human,Rat.</p> <p>Gene Name: activating transcription factor 1</p> <p>Protein Name: Cyclic AMP-dependent transcription factor ATF-1</p>
Purification:	Immunogen affinity purified.

Target Details

Target:	AFT1
Alternative Name:	ATF1 (AFT1 Products)
Background:	<p>ATF1, also known as activating transcription factor 1, is a protein that in humans is encoded by the ATF1 gene. It is mapped to 12q13.12. This gene encodes an activating transcription factor, which belongs to the ATF subfamily and bZIP (basic-region leucine zipper) family. It influences cellular physiologic processes by regulating the expression of downstream target genes, which are related to growth, survival, and other cellular activities. This protein is phosphorylated at serine 63 in its kinase-inducible domain by serine/threonine kinases, cAMP-dependent protein kinase A, calmodulin-dependent protein kinase I/II, mitogen- and stress-activated protein kinase and cyclin-dependent kinase 3 (cdk-3). Its phosphorylation enhances its transactivation and transcriptional activities, and enhances cell transformation.</p> <p>Synonyms: Activating transcription factor 1 antibody ATF 1 antibody atf1 antibody ATF1 EWS fusion gene antibody ATF1 FUS fusion gene antibody ATF1_HUMAN antibody cAMP dependent transcription factor 1 antibody cAMP-dependent transcription factor ATF-1 antibody Cyclic AMP dependent transcription factor ATF 1 antibody Cyclic AMP dependent transcription factor ATF1 antibody Cyclic AMP-dependent transcription factor ATF-1 antibody EWS AFT1 antibody FUS ATF 1 antibody FUS/ATF 1 antibody Protein TREB36 antibody RNA binding protein activating transcription factor 1 fusion protein antibody TREB 36 antibody TREB36 antibody TREB36 protein antibody</p>
Gene ID:	466
UniProt:	P18846
Pathways:	Neurotrophin Signaling Pathway , Activation of Innate immune Response , Myometrial Relaxation and Contraction , Toll-Like Receptors Cascades

Application Details

Application Notes:	<p>WB: Concentration: 0.1-0.5 µg/mL, Tested Species: Human, Rat, The detection limit for ATF1 is approximately 0.25 ng/lane under reducing conditions.</p> <p>IHC-P: Concentration: 0.5-1 µg/mL, Tested Species: Human, Epitope Retrieval by Heat: Boiling the paraffin sections in 10 mM citrate buffer, pH 6.0, for 20 mins is required for the staining of formalin/paraffin sections.</p> <p>Notes: Tested Species: Species with positive results. Other applications have not been tested. Optimal dilutions should be determined by end users.</p>
--------------------	--

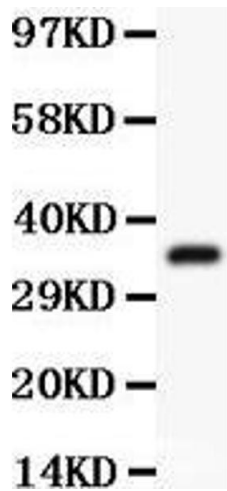
Application Details

Comment:	Antibody can be supported by chemiluminescence kit ABIN921124 in WB, supported by ABIN921231 in IHC(P).
Restrictions:	For Research Use only

Handling

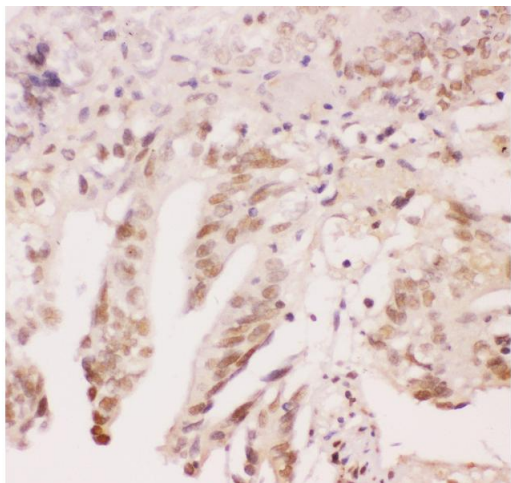
Format:	Lyophilized
Reconstitution:	Add 0.2 mL of distilled water will yield a concentration of 500 µg/mL.
Concentration:	500 µg/mL
Buffer:	Each vial contains 5 mg BSA, 0.9 mg NaCl, 0.2 mg Na2HPO4, 0.05 mg Sodium azide.
Preservative:	Sodium azide
Precaution of Use:	This product contains Sodium azide: a POISONOUS AND HAZARDOUS SUBSTANCE which should be handled by trained staff only.
Handling Advice:	Avoid repeated freezing and thawing.
Storage:	4 °C/-20 °C
Storage Comment:	At -20°C for one year. After reconstitution, at 4°C for one month. It can also be aliquotted and stored frozen at -20 °C for a longer time. Avoid repeated freezing and thawing.

Images



Western Blotting

Image 1. Anti-ATF1 Picoband antibody, All lanes: Anti ATF1 at 0.5ug/ml WB: Recombinant Human ATF1 Protein 0.5ng
Predicted bind size: 36KD Observed bind size: 36KD



Immunohistochemistry

Image 2. Anti-ATF1 Picoband antibody, IHC(P): Human Intestinal Cancer Tissue



Western Blotting

Image 3. Anti-ATF1 Picoband antibody, All lanes: Anti ATF1 at 0.5ug/ml Lane 1: Rat Spleen Tissue Lysate at 50ug Lane 2: HELA Whole Cell Lysate at 40ug Lane 3: COLO320 Whole Cell Lysate at 40ug Predicted bind size: 29KD Observed bind size: 29KD