

Datasheet for ABIN3043733
anti-ABCB11 antibody (C-Term)



[Go to Product page](#)

4 Images

Overview

Quantity:	100 µg
Target:	ABCB11
Binding Specificity:	AA 1175-1199, C-Term
Reactivity:	Human, Mouse, Rat
Host:	Rabbit
Clonality:	Polyclonal
Conjugate:	This ABCB11 antibody is un-conjugated
Application:	Western Blotting (WB), Immunohistochemistry (Paraffin-embedded Sections) (IHC (p))

Product Details

Purpose:	Rabbit IgG polyclonal antibody for Bile salt export pump(ABCB11) detection. Tested with WB, IHC-P in Human,Mouse,Rat.
Immunogen:	A synthetic peptide corresponding to a sequence at the C-terminus of human ABCB11 (1175-1199aa KYGDNTKEIPMERVIAAAKQ AQLHD), different from the related mouse and rat sequences by three amino acids.
Sequence:	KYGDNTKEIP MERVIAAAKQ AQLHD
Isotype:	IgG
Cross-Reactivity (Details):	No cross reactivity with other proteins.
Characteristics:	Rabbit IgG polyclonal antibody for Bile salt export pump(ABCB11) detection. Tested with WB, IHC-P in Human,Mouse,Rat. Gene Name: ATP-binding cassette, sub-family B (MDR/TAP), member 11

Product Details

Protein Name: Bile salt export pump

Purification: Immunogen affinity purified.

Target Details

Target: ABCB11

Alternative Name: ABCB11 ([ABCB11 Products](#))

Background: Bile Salt Export Pump (BSEP) is a protein which in humans is encoded by the ABCB 11 gene. It is a member of the superfamily of ATP-binding cassette (ABC) transporters, also known as ABCB11. It is mapped to chromosome 2q24. The BSEP protein is mainly expressed in the liver. ABCB11 is a gene associated with progressive familial intrahepatic cholestasis type 2 (PFIC2) which caused by mutations in the ABCB11 gene will increases the risk of hepatocellular carcinoma in early life.

Synonyms: ABC member 16, MDR/TAP subfamily antibody|ABCB1 antibody|Abcb11 antibody|ABCB11_HUMAN antibody|ATP binding cassette sub family B (MDR/TAP) member 11 antibody|ATP binding cassette sub family B member 11 antibody|ATP-binding cassette sub-family B member 11 antibody|Bile salt export pump antibody|BRIC2 antibody|Bsep antibody|PGY4 antibody| progressive familial intrahepatic cholestasis 2 antibody|Sister of P glycoprotein antibody| Spgp antibody

Gene ID: 8647

UniProt: [O95342](#)

Application Details

Application Notes: WB: Concentration: 0.1-0.5 µg/mL, Tested Species: Human, Mouse, Rat, The detection limit for ABCB11 is approximately 0.1 ng/lane under reducing conditions.
IHC-P: Concentration: 0.5-1 µg/mL, Tested Species: Human, Mouse, Rat, Epitope Retrieval by Heat: Boiling the paraffin sections in 10 mM citrate buffer, pH 6.0, for 20 mins is required for the staining of formalin/paraffin sections.
Notes: Tested Species: Species with positive results. Other applications have not been tested. Optimal dilutions should be determined by end users.

Comment: Antibody can be supported by chemiluminescence kit ABIN921124 in WB, supported by ABIN921231 in IHC(P).

Application Details

Restrictions: For Research Use only

Handling

Format: Lyophilized

Reconstitution: Add 0.2 mL of distilled water will yield a concentration of 500 µg/mL.

Concentration: 500 µg/mL

Buffer: Each vial contains 5 mg BSA, 0.9 mg NaCl, 0.2 mg Na₂HPO₄, 0.05 mg Sodium azide.

Preservative: Sodium azide

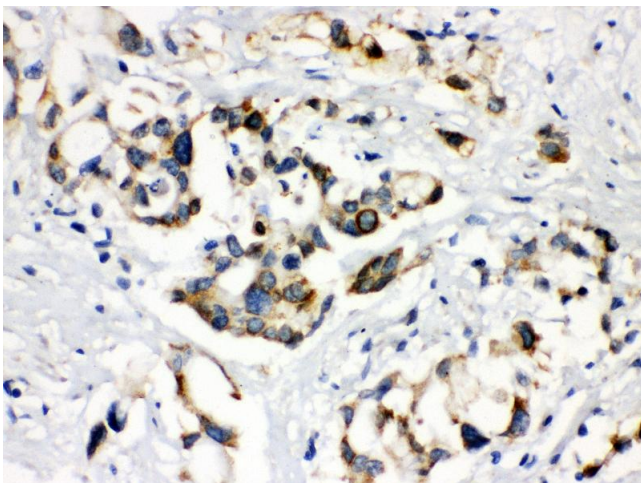
Precaution of Use: This product contains Sodium azide: a POISONOUS AND HAZARDOUS SUBSTANCE which should be handled by trained staff only.

Handling Advice: Avoid repeated freezing and thawing.

Storage: 4 °C/-20 °C

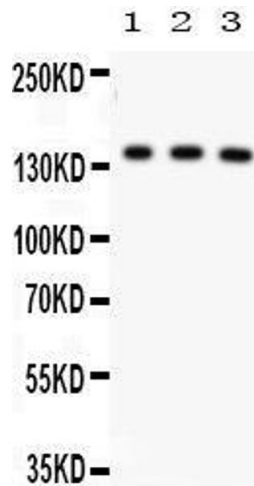
Storage Comment: At -20°C for one year. After reconstitution, at 4°C for one month.
It can also be aliquotted and stored frozen at -20 °C for a longer time. Avoid repeated freezing and thawing.

Images



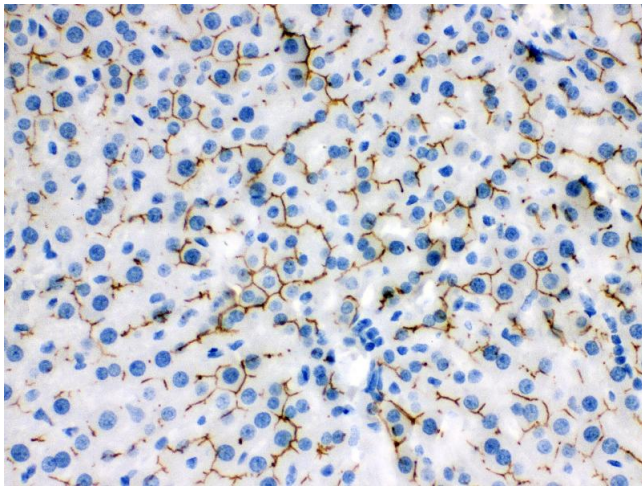
Immunohistochemistry

Image 1. Anti- ABCB11 Picoband antibody, IHC(P) IHC(P):
Human Liver Cancer Tissue



Western Blotting

Image 2. Anti- ABCB11 Picoband antibody, Western blotting
All lanes: Anti ABCB11 at 0.5ug/ml Lane 1: Rat Liver Tissue Lysate at 50ug Lane 2: Mouse Liver Tissue Lysate at 50ug Lane 3: SMMC Whole Cell Lysate at 40ug Predicted bind size: 146KD Observed bind size: 146KD



Immunohistochemistry

Image 3. Anti- ABCB11 Picoband antibody, IHC(P) IHC(P):
Rat Liver Tissue

Please check the [product details page](#) for more images. Overall 4 images are available for ABIN3043733.