

Datasheet for ABIN3043786
anti-APLP1 antibody (N-Term)

4 Images

[Go to Product page](#)

Overview

Quantity:	100 µg
Target:	APLP1
Binding Specificity:	AA 82-112, N-Term
Reactivity:	Human, Mouse, Rat
Host:	Rabbit
Clonality:	Polyclonal
Application:	Western Blotting (WB), Immunohistochemistry (Paraffin-embedded Sections) (IHC (p))

Product Details

Purpose:	Rabbit IgG polyclonal antibody for Amyloid-like protein 1 (APLP1) detection. Tested with WB, IHC-P in Human, Mouse, Rat.
Immunogen:	A synthetic peptide corresponding to a sequence at the N-terminus of human APLP1 (82-112aa RRCLRDPQRVLEYCRQMYPELQIARVEQATQ), different from the related mouse sequence by three amino acids.
Sequence:	RRCLRDPQRV LEYCRQMYPE LQIARVEQAT Q
Isotype:	IgG
Cross-Reactivity (Details):	No cross reactivity with other proteins.
Characteristics:	<p>Rabbit IgG polyclonal antibody for Amyloid-like protein 1 (APLP1) detection. Tested with WB, IHC-P in Human, Mouse, Rat.</p> <p>Gene Name: amyloid beta (A4) precursor-like protein 1</p> <p>Protein Name: Amyloid-like protein 1</p>

Product Details

Purification: Immunogen affinity purified.

Target Details

Target: APLP1

Alternative Name: APLP1 ([APLP1 Products](#))

Background: Amyloid-precursor-like protein 1 (APLP1) is a membrane-associated glycoprotein, whose gene is homologous to the APP gene, which has been shown to be involved in the pathogenesis of Alzheimer's disease. APLP1 is predominantly expressed in brain, particularly in the cerebral cortex postsynaptic density. The human gene has been mapped to chromosomal region 19q13.1. The gene is 11.8 kb long and contains 17 exons. APLP1 has been considered a candidate gene for CNF. All exon regions of the gene were amplified by the polymerase chain reaction and sequenced from DNA of CNF patients. No differences were observed between CNF patients and controls, suggesting that mutations in APLP1 are not involved in the etiology of CNF.

Synonyms: AMYLOID BETA A4 PRECURSOR-LIKE PROTEIN 1 antibody|AMYLOID PRECURSOR-LIKE PROTEIN antibody| Amyloid-like protein 1 precursor antibody|APLP 1 antibody|APLP antibody|APLP-1 antibody| Aplp1 antibody|APLP1_HUMAN antibody|C30 antibody

Gene ID: 333

UniProt: [P51693](#)

Pathways: [cAMP Metabolic Process](#)

Application Details

Application Notes: WB: Concentration: 0.1-0.5 µg/mL, Tested Species: Human, Rat
IHC-P: Concentration: 0.5-1 µg/mL, Tested Species: Mouse, Rat, Predicted Species: Human, Epitope Retrieval by Heat: Boiling the paraffin sections in 10 mM citrate buffer, pH 6.0, for 20 mins is required for the staining of formalin/paraffin sections.
Notes: Tested Species: Species with positive results. Predicted Species: Species predicted to be fit for the product based on sequence similarities. Other applications have not been tested.
Optimal dilutions should be determined by end users.

Comment: Antibody can be supported by chemiluminescence kit ABIN921124 in WB, supported by ABIN921231 in IHC(P).

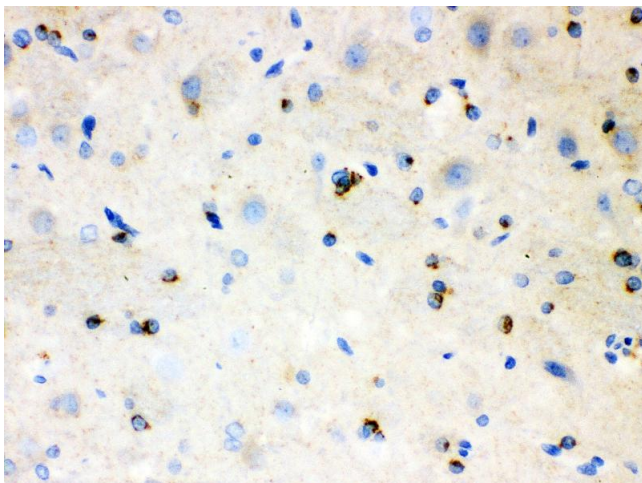
Application Details

Restrictions: For Research Use only

Handling

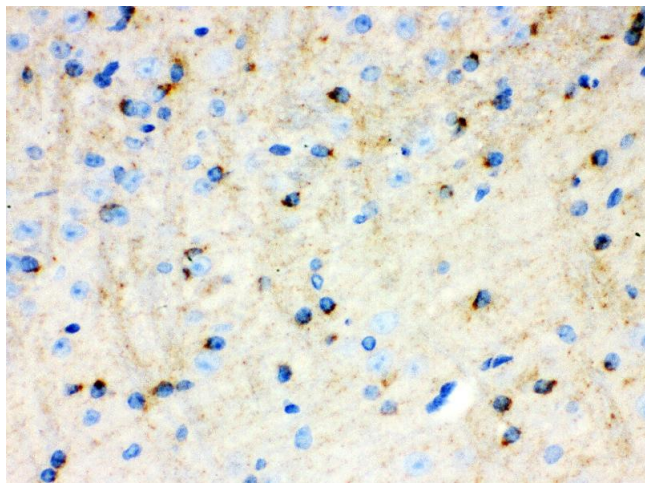
Format:	Lyophilized
Reconstitution:	Add 0.2 mL of distilled water will yield a concentration of 500 µg/mL.
Concentration:	500 µg/mL
Buffer:	Each vial contains 5 mg BSA, 0.9 mg NaCl, 0.2 mg Na ₂ HPO ₄ , 0.05 mg Sodium azide.
Preservative:	Sodium azide
Precaution of Use:	This product contains Sodium azide: a POISONOUS AND HAZARDOUS SUBSTANCE which should be handled by trained staff only.
Handling Advice:	Avoid repeated freezing and thawing.
Storage:	4 °C/-20 °C
Storage Comment:	At -20°C for one year. After reconstitution, at 4°C for one month. It can also be aliquotted and stored frozen at -20 °C for a longer time. Avoid repeated freezing and thawing.

Validation report #300031 for Immunohistochemistry (IHC)



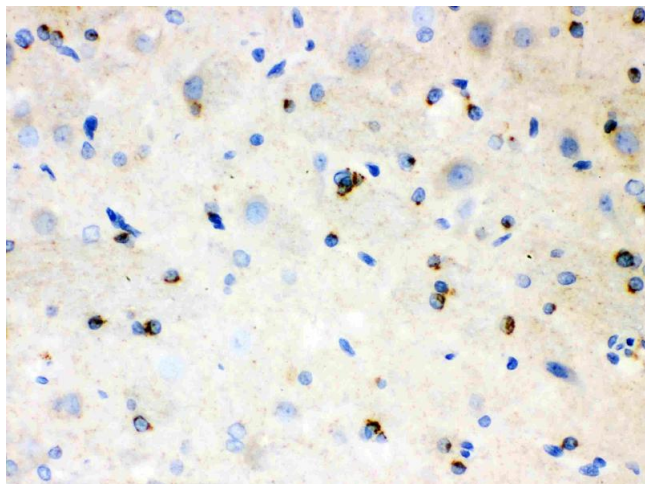
Immunohistochemistry

Image 1. Anti- APLP1 Picoband antibody,IHC(P) IHC(P): Rat Brain Tissue



Immunohistochemistry

Image 2. Anti- APLP1 Picoband antibody,IHC(P) IHC(P):
Mouse Brain Tissue



Immunohistochemistry

Image 3. IHC analysis of APLP1 using anti-APLP1 antibody .
APLP1 was detected in paraffin-embedded section of Rat Brain Tissue. Heat mediated antigen retrieval was performed in citrate buffer (pH6, epitope retrieval solution) for 20 mins. The tissue section was blocked with 10% goat serum. The tissue section was then incubated with 1µg/ml rabbit anti-APLP1 Antibody overnight at 4°C. Biotinylated goat anti-rabbit IgG was used as secondary antibody and incubated for 30 minutes at 37°C. The tissue section was developed using Streptavidin-Biotin-Complex (SABC)(Catalog # SA1022) with DAB as the chromogen.

Please check the [product details page](#) for more images. Overall 4 images are available for ABIN3043786.