

Datasheet for ABIN3043790

anti-Aspartate beta Hydroxylase antibody (C-Term)



[Go to Product page](#)

2 Images

Overview

Quantity:	100 µg
Target:	Aspartate beta Hydroxylase (ASPH)
Binding Specificity:	AA 726-758, C-Term
Reactivity:	Human, Mouse, Rat
Host:	Rabbit
Clonality:	Polyclonal
Conjugate:	This Aspartate beta Hydroxylase antibody is un-conjugated
Application:	Western Blotting (WB), Immunohistochemistry (Paraffin-embedded Sections) (IHC (p))

Product Details

Purpose:	Rabbit IgG polyclonal antibody for Aspartyl/asparaginyl beta-hydroxylase(ASPH) detection. Tested with WB, IHC-P in Human,Mouse,Rat.
Immunogen:	A synthetic peptide corresponding to a sequence at the C-terminus of human ASPH (726-758aa EVWQDASSFRLIFIVDVWHP ELTPQRRSLPAI), identical to the related mouse sequence.
Sequence:	EVWQDASSFR LIFIVDVWHP ELTPQRRSL PAI
Isotype:	IgG
Cross-Reactivity (Details):	No cross reactivity with other proteins.
Characteristics:	Rabbit IgG polyclonal antibody for Aspartyl/asparaginyl beta-hydroxylase(ASPH) detection. Tested with WB, IHC-P in Human,Mouse,Rat. Gene Name: aspartate beta-hydroxylase Protein Name: Aspartyl/asparaginyl beta-hydroxylase

Product Details

Purification: Immunogen affinity purified.

Target Details

Target: Aspartate beta Hydroxylase (ASPH)

Alternative Name: ASPH ([ASPH Products](#))

Background: ASPH is also known as Aspartyl/asparaginyl beta-hydroxylase. This gene is thought to play an important role in calcium homeostasis. And the gene is expressed from two promoters and undergoes extensive alternative splicing. The encoded set of proteins share varying amounts of overlap near their N-termini but have substantial variations in their C-terminal domains resulting in distinct functional properties. The longest isoforms (a and f) include a C-terminal Aspartyl/Asparaginyl beta-hydroxylase domain that hydroxylates aspartic acid or asparagine residues in the epidermal growth factor (EGF)-like domains of some proteins, including protein C, coagulation factors VII, IX, and X, and the complement factors C1R and C1S. Other isoforms differ primarily in the C-terminal sequence and lack the hydroxylase domain, and some have been localized to the endoplasmic and sarcoplasmic reticulum. Some of these isoforms are found in complexes with calsequestrin, triadin, and the ryanodine receptor, and have been shown to regulate calcium release from the sarcoplasmic reticulum. Some isoforms have been implicated in metastasis.

Synonyms: A beta H J J antibody|AAH antibody|ASP beta hydroxylase antibody|Aspartyl/asparaginyl beta hydroxylase antibody|ASPH antibody|ASPH_HUMAN antibody|BAH antibody|Cardiac junctin antibody|CASQ2BP1 antibody|HAAH antibody|Humbug antibody|JCTN antibody|junctin antibody| Peptide aspartate beta dioxygenase antibody

Gene ID: 444

UniProt: [Q12797](#)

Pathways: [Positive Regulation of Endopeptidase Activity](#)

Application Details

Application Notes: WB: Concentration: 0.1-0.5 µg/mL, Tested Species: Human, Mouse, Rat
IHC-P: Concentration: 0.5-1 µg/mL, Tested Species: Human, Epitope Retrieval by Heat: Boiling the paraffin sections in 10 mM citrate buffer, pH 6.0, for 20 mins is required for the staining of formalin/paraffin sections.
Notes: Tested Species: Species with positive results. Other applications have not been tested.

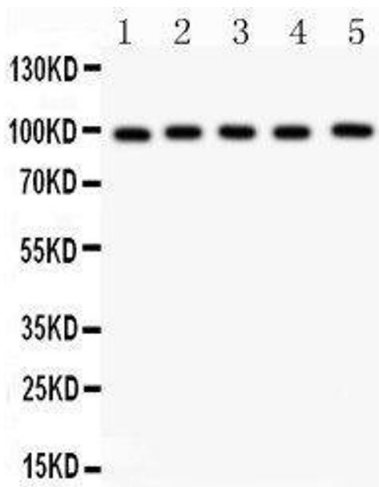
Application Details

	Optimal dilutions should be determined by end users.
Comment:	Antibody can be supported by chemiluminescence kit ABIN921124 in WB, supported by ABIN921231 in IHC(P).
Restrictions:	For Research Use only

Handling

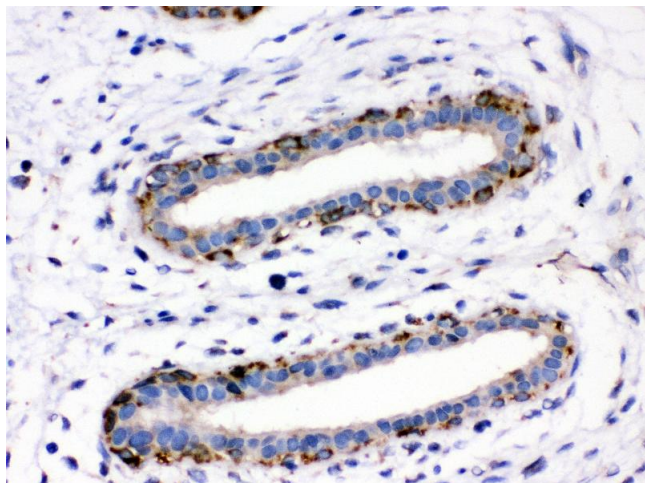
Format:	Lyophilized
Reconstitution:	Add 0.2 mL of distilled water will yield a concentration of 500 µg/mL.
Concentration:	500 µg/mL
Buffer:	Each vial contains 5 mg BSA, 0.9 mg NaCl, 0.2 mg Na2HPO4, 0.05 mg Sodium azide.
Preservative:	Sodium azide
Precaution of Use:	This product contains Sodium azide: a POISONOUS AND HAZARDOUS SUBSTANCE which should be handled by trained staff only.
Handling Advice:	Avoid repeated freezing and thawing.
Storage:	4 °C/-20 °C
Storage Comment:	At -20°C for one year. After reconstitution, at 4°C for one month. It can also be aliquotted and stored frozen at -20 °C for a longer time. Avoid repeated freezing and thawing.

Images



Western Blotting

Image 1. Anti- ASPH Picoband antibody, Western blotting All lanes: Anti ASPH at 0.5ug/ml Lane 1: Rat Brain Tissue Lysate at 50ug Lane 2: Rat Liver Tissue Lysate at 50ug Lane 3: HELA Whole Cell Lysate at 40ug Lane 4: HEPG2 Whole Cell Lysate at 40ug Lane 5: HEPA Whole Cell Lysate at 40ug Predicted bind size: 86KD Observed bind size: 100KD



Immunohistochemistry

Image 2. Anti- ASPH Picoband antibody,IHC(P) IHC(P):
Human Mammary Cancer Tissue