

Datasheet for ABIN3043794
anti-ATP2A3 antibody (N-Term)

3 Images

[Go to Product page](#)

Overview

Quantity:	100 µg
Target:	ATP2A3
Binding Specificity:	AA 1-30, N-Term
Reactivity:	Mouse, Rat
Host:	Rabbit
Clonality:	Polyclonal
Application:	Western Blotting (WB), Immunohistochemistry (Paraffin-embedded Sections) (IHC (p))

Product Details

Purpose:	Rabbit IgG polyclonal antibody for Sarcoplasmic/endoplasmic reticulum calcium ATPase 3(ATP2A3) detection. Tested with WB, IHC-P in Human, Mouse, Rat.
Immunogen:	A synthetic peptide corresponding to a sequence at the N-terminus of human ATP2A3(1-30aa MEAAHLLPAADVLRHFSVTAEGGLSPAQVT), different from the related mouse sequence by five amino acids, and from the related rat sequence by six amino acids.
Sequence:	MEAAHLLPAA DVLRHFSVTA EGGLSPAQVT
Isotype:	IgG
Cross-Reactivity (Details):	<p>Predicted Cross Reactivity: human</p> <p>No cross reactivity with other proteins.</p> <p>Predicted Cross Reactivity: Species predicted to be fit for the product based on sequence similarities.</p>
Characteristics:	Rabbit IgG polyclonal antibody for Sarcoplasmic/endoplasmic reticulum calcium ATPase

Product Details

3(ATP2A3) detection. Tested with WB, IHC-P in Human, Mouse, Rat.

Gene Name: ATPase, Ca⁺⁺ transporting, ubiquitous

Protein Name: Sarcoplasmic/endoplasmic reticulum calcium ATPase 3

Purification: Immunogen affinity purified.

Target Details

Target: ATP2A3

Alternative Name: ATP2A3 ([ATP2A3 Products](#))

Background: Sarcoplasmic/endoplasmic reticulum calcium ATPase 3, also known as SERCA3, is an enzyme that in humans is encoded by the ATP2A3 gene. It is mapped to 17p13.2. This gene encodes one of the SERCA Ca²⁺-ATPases, which are intracellular pumps located in the sarcoplasmic or endoplasmic reticulum of cells. ATP2A3 expression was originally described as non-muscular, but was recently observed in cardiomyocyte. What's more, the expression of ATP2A3 was significantly reduced or lost in colon carcinomas compared with normal colonic epithelial cells. This enzyme catalyzes the hydrolysis of ATP coupled with the translocation of calcium from the cytosol to the sarcoplasmic reticulum lumen, and is involved in calcium sequestration associated with muscular excitation and contraction.

Synonyms: Adenosine triphosphatase calcium antibody|AT2A3_HUMAN antibody|ATP2A3 antibody|ATPase Ca(2+) transporting ubiquitous antibody|ATPase Ca⁺⁺ transporting ubiquitous antibody|Calcium pump 3 antibody|Calcium translocating P type ATPase antibody|Sarco/endoplasmic reticulum Ca²⁺ ATPase antibody|Sarcoplasmic/endoplasmic reticulum calcium ATPase 3 antibody|SERCA 3 antibody|SERCA3 antibody|SERCA3b antibody|SR Ca(2+) ATPase 3 antibody|SR Ca(2+)-ATPase 3 antibody

Gene ID: 489

UniProt: [Q93084](#)

Pathways: [Myometrial Relaxation and Contraction](#), [Ribonucleoside Biosynthetic Process](#)

Application Details

Application Notes: WB: Concentration: 0.1-0.5 µg/mL, Tested Species: Mouse, Rat, Predicted Species: Human
IHC-P: Concentration: 0.5-1 µg/mL, Tested Species: Mouse, Rat, Predicted Species: Human,
Epitope Retrieval by Heat: Boiling the paraffin sections in 10 mM citrate buffer, pH 6.0, for 20 mins is required for the staining of formalin/paraffin sections.

Application Details

Notes: Tested Species: Species with positive results. Predicted Species: Species predicted to be fit for the product based on sequence similarities. Other applications have not been tested.
Optimal dilutions should be determined by end users.

Comment: Antibody can be supported by chemiluminescence kit ABIN921124 in WB, supported by ABIN921231 in IHC(P).

Restrictions: For Research Use only

Handling

Format: Lyophilized

Reconstitution: Add 0.2 mL of distilled water will yield a concentration of 500 µg/mL.

Concentration: 500 µg/mL

Buffer: Each vial contains 5 mg BSA, 0.9 mg NaCl, 0.2 mg Na₂HPO₄, 0.05 mg Sodium azide.

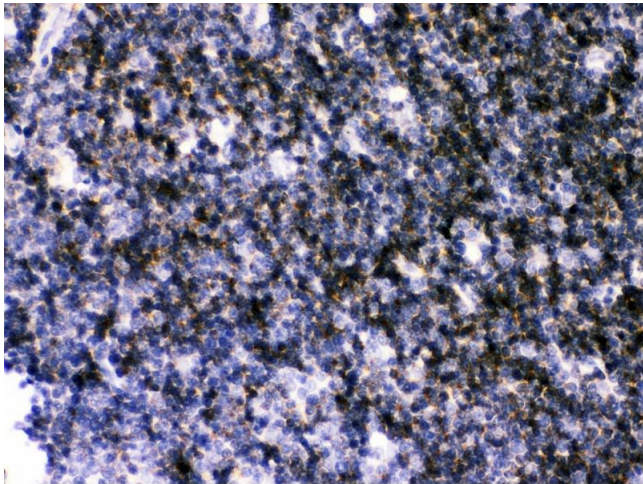
Preservative: Sodium azide

Precaution of Use: This product contains Sodium azide: a POISONOUS AND HAZARDOUS SUBSTANCE which should be handled by trained staff only.

Handling Advice: Avoid repeated freezing and thawing.

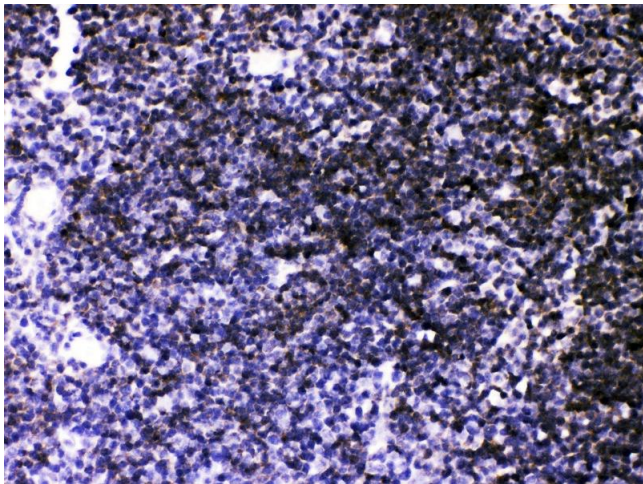
Storage: 4 °C/-20 °C

Storage Comment: At -20°C for one year. After reconstitution, at 4°C for one month.
It can also be aliquotted and stored frozen at -20 °C for a longer time. Avoid repeated freezing and thawing.



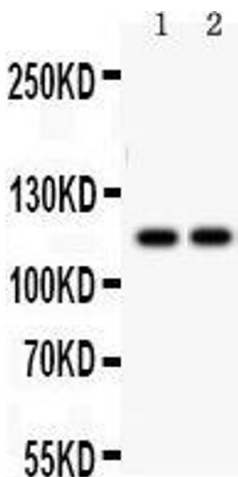
Immunohistochemistry

Image 1. Anti- ATP2A3 antibody,IHC(P) IHC(P): Rat Thymus Tissue



Immunohistochemistry

Image 2. Anti- ATP2A3 antibody, IHC(P) IHC(P): Mouse Thymus Tissue



Western Blotting

Image 3.