

Datasheet for ABIN3043809
anti-CEBPB antibody (AA 1-200)



[Go to Product page](#)

2 Images

Overview

Quantity:	100 µg
Target:	CEBPB
Binding Specificity:	AA 1-200
Reactivity:	Human, Mouse, Rat
Host:	Rabbit
Clonality:	Polyclonal
Conjugate:	This CEBPB antibody is un-conjugated
Application:	Western Blotting (WB), Immunohistochemistry (Paraffin-embedded Sections) (IHC (p)), Immunohistochemistry (Frozen Sections) (IHC (fro))

Product Details

Purpose:	Rabbit IgG polyclonal antibody for CCAAT/enhancer-binding protein beta(CEBPB) detection. Tested with WB, IHC-P, IHC-F in Human,Mouse,Rat.
Immunogen:	E.coli-derived human CEBP Beta recombinant protein (Position: M1-A200). Human CEBP Beta shares 61% amino acid (aa) sequence identity with both mouse and rat CEBP Beta.
Isotype:	IgG
Cross-Reactivity (Details):	No cross reactivity with other proteins.
Characteristics:	Rabbit IgG polyclonal antibody for CCAAT/enhancer-binding protein beta(CEBPB) detection. Tested with WB, IHC-P, IHC-F in Human,Mouse,Rat. Gene Name: CCAAT/enhancer binding protein (C/EBP), beta Protein Name: CCAAT/enhancer-binding protein beta

Product Details

Purification: Immunogen affinity purified.

Target Details

Target: CEBPB

Alternative Name: CEBPB ([CEBPB Products](#))

Background: CCAAT/enhancer-binding protein beta, also known as is CEBP-beta, is a protein that in humans is encoded by the CEBPB gene. It mapped to 20q13.13. The protein encoded by this intronless gene is a bZIP transcription factor that can bind as a homodimer to certain DNA regulatory regions. It can also form heterodimers with the related proteins CEBP-alpha, CEBP-delta, and CEBP-gamma. The encoded protein is important in the regulation of genes involved in immune and inflammatory responses and has been shown to bind to the IL-1 response element in the IL-6 gene, as well as to regulatory regions of several acute-phase and cytokine genes. In addition, the encoded protein can bind the promoter and upstream element and stimulate the expression of the collagen type I gene. CEBP-beta is critical for normal macrophage functioning, an important immune cell sub-type. Observational work has shown that expression of CEBP-beta in blood leukocytes is positively associated with muscle strength in humans, emphasizing the importance of the immune system, and particularly macrophages, in the maintenance of muscle function.

Synonyms: AGP/EBP antibody|C EBP beta antibody|C/EBP beta antibody|C/EBP related protein 2 antibody|CCAAT Enhancer Binding Protein beta antibody|CCAAT/enhancer-binding protein beta antibody|CEBPB antibody|CEBPB_HUMAN antibody|CRP2 antibody|IL 6DBP antibody|IL6DBP antibody|Interleukin 6 dependent binding protein antibody|LAP antibody|Liver activator protein antibody|Liver enriched transcriptional activator antibody|NF IL6 antibody|NFIL6 antibody|Nuclear factor NF IL6 antibody|Nuclear factor NF-IL6 antibody|SF B antibody|SFB antibody|Silencer factor B antibody|TCF-5 antibody|TCF5 antibody|Transcription factor 5 antibody

Gene ID: 1051

UniProt: [P17676](#)

Pathways: [Interferon-gamma Pathway](#), [Autophagy](#), [Brown Fat Cell Differentiation](#)

Application Details

Application Notes: WB: Concentration: 0.1-0.5 µg/mL, Tested Species: Human, Mouse, Rat, The detection limit for

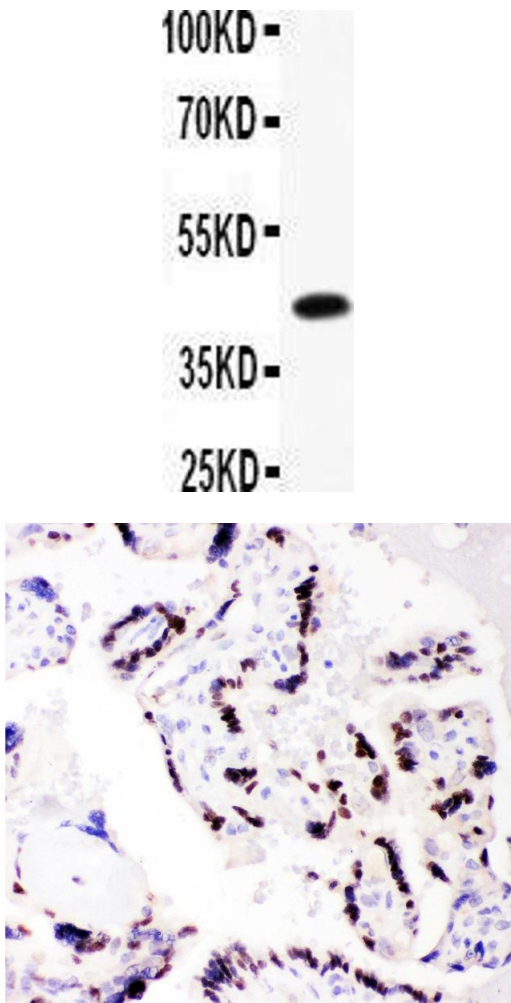
Application Details

	<p>CEBP Beta is approximately 0.25 ng/lane under reducing conditions.</p> <p>IHC-P: Concentration: 0.5-1 µg/mL, Tested Species: Human, Epitope Retrieval by Heat: Boiling the paraffin sections in 10 mM citrate buffer, pH 6.0, for 20 mins is required for the staining of formalin/paraffin sections.</p> <p>IHC-F: Concentration: 0.5-1 µg/mL, Tested Species: Human</p> <p>Notes: Tested Species: Species with positive results. Other applications have not been tested.</p> <p>Optimal dilutions should be determined by end users.</p>
Comment:	Antibody can be supported by chemiluminescence kit ABIN921124 in WB, supported by ABIN921231 in IHC(P) and IHC(F).

Restrictions: For Research Use only

Handling

Format:	Lyophilized
Reconstitution:	Add 0.2 mL of distilled water will yield a concentration of 500 µg/mL.
Concentration:	500 µg/mL
Buffer:	Each vial contains 5 mg BSA, 0.9 mg NaCl, 0.2 mg Na2HPO4, 0.05 mg Sodium azide.
Preservative:	Sodium azide
Precaution of Use:	This product contains Sodium azide: a POISONOUS AND HAZARDOUS SUBSTANCE which should be handled by trained staff only.
Handling Advice:	Avoid repeated freezing and thawing.
Storage:	4 °C/-20 °C
Storage Comment:	<p>At -20°C for one year. After reconstitution, at 4°C for one month.</p> <p>It can also be aliquotted and stored frozen at -20 °C for a longer time. Avoid repeated freezing and thawing.</p>



Western Blotting

Image 1. Anti- CEBP Beta Picoband antibody, Western blotting All lanes: Anti CEBP Beta at 0.5ug/ml WB: Recombinant Human CEBP Beta Protein 0.5ng Predicted bind size: 42KD Observed bind size: 42KD

Immunohistochemistry

Image 2. Anti- CEBP Beta Picoband antibody, IHC(P) IHC(P): Human Placenta Tissue