

Datasheet for ABIN3043815  
**anti-COMT antibody (AA 52-271)**

## 8 Images

[Go to Product page](#)

## Overview

Quantity:	100 µg
Target:	COMT
Binding Specificity:	AA 52-271
Reactivity:	Human, Mouse, Rat
Host:	Rabbit
Clonality:	Polyclonal
Application:	Western Blotting (WB), Immunohistochemistry (Paraffin-embedded Sections) (IHC (p)), Immunocytochemistry (ICC)

## Product Details

Purpose:	Rabbit IgG polyclonal antibody for Catechol O-methyltransferase(COMT) detection. Tested with WB, IHC-P, ICC in Human,Mouse,Rat.
Immunogen:	E.coli-derived human COMT recombinant protein (Position: G52-P271). Human COMT shares 81.9% and 81% amino acid (aa) sequence identity with mouse and rat COMT, respectively.
Isotype:	IgG
Cross-Reactivity (Details):	No cross reactivity with other proteins.
Characteristics:	<p>Rabbit IgG polyclonal antibody for Catechol O-methyltransferase(COMT) detection. Tested with WB, IHC-P, ICC in Human,Mouse,Rat.</p> <p>Gene Name: catechol-O-methyltransferase</p> <p>Protein Name: Catechol O-methyltransferase</p>
Purification:	Immunogen affinity purified.

## Target Details

Target:	COMT
Alternative Name:	COMT ( <a href="#">COMT Products</a> )
Background:	<p>Catechol O-methyltransferase, also called COMT, is one of the major mammalian enzymes involved in the metabolic degradation of catecholamines. This gene is mapped to 22q11.21. Catechol-O-methyltransferase catalyzes the transfer of a methyl group from S-adenosylmethionine to catecholamines, including the neurotransmitters dopamine, epinephrine, and norepinephrine. This O-methylation results in one of the major degradative pathways of the catecholamine transmitters. In addition to its role in the metabolism of endogenous substances, COMT is important in the metabolism of catechol drugs used in the treatment of hypertension, asthma, and Parkinson disease. COMT is found in two forms in tissues, a soluble form (S-COMT) and a membrane-bound form (MB-COMT). The differences between S-COMT and MB-COMT reside within the N-termini.</p> <p>Synonyms: Catechol O methyltransferase antibody Catechol O-methyltransferase antibody COMT antibody  COMT_HUMAN antibody EC 2.1.1.6 antibody</p>
Gene ID:	1312
UniProt:	<a href="#">P21964</a>
Pathways:	<a href="#">Steroid Hormone Biosynthesis</a> , <a href="#">SARS-CoV-2 Protein Interactome</a>

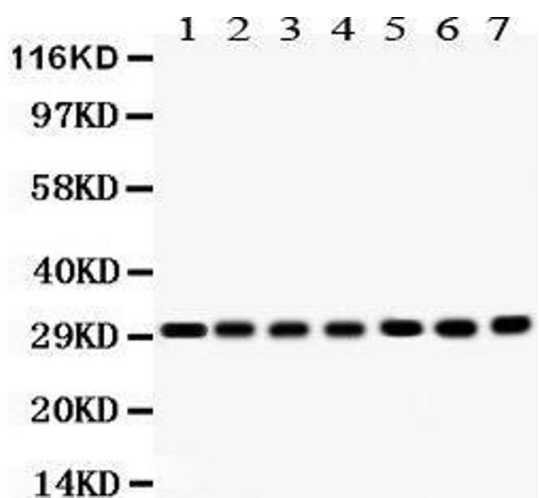
## Application Details

Application Notes:	<p>WB: Concentration: 0.1-0.5 µg/mL, Tested Species: Human, Mouse, Rat</p> <p>IHC-P: Concentration: 0.5-1 µg/mL, Tested Species: Human, Mouse, Rat, Epitope Retrieval by Heat: Boiling the paraffin sections in 10 mM citrate buffer, pH 6.0, for 20 mins is required for the staining of formalin/paraffin sections.</p> <p>ICC: Concentration: 0.5-1 µg/mL, Tested Species: Human</p> <p>Notes: Tested Species: Species with positive results. Other applications have not been tested. Optimal dilutions should be determined by end users.</p>
Comment:	Antibody can be supported by chemiluminescence kit ABIN921124 in WB, supported by ABIN921231 in IHC(P).
Restrictions:	For Research Use only

Handling

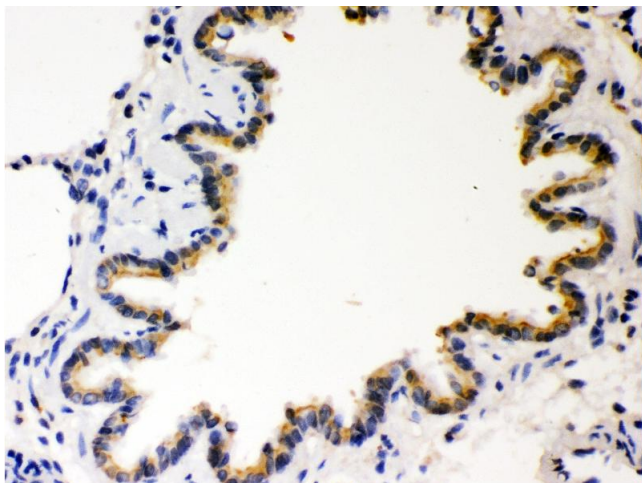
Format:	Lyophilized
Reconstitution:	Add 0.2 mL of distilled water will yield a concentration of 500 µg/mL.
Concentration:	500 µg/mL
Buffer:	Each vial contains 5 mg BSA, 0.9 mg NaCl, 0.2 mg Na2HPO4, 0.05 mg Sodium azide.
Preservative:	Sodium azide
Precaution of Use:	This product contains Sodium azide: a POISONOUS AND HAZARDOUS SUBSTANCE which should be handled by trained staff only.
Handling Advice:	Avoid repeated freezing and thawing.
Storage:	4 °C/-20 °C
Storage Comment:	At -20°C for one year. After reconstitution, at 4°C for one month. It can also be aliquotted and stored frozen at -20 °C for a longer time. Avoid repeated freezing and thawing.

Images



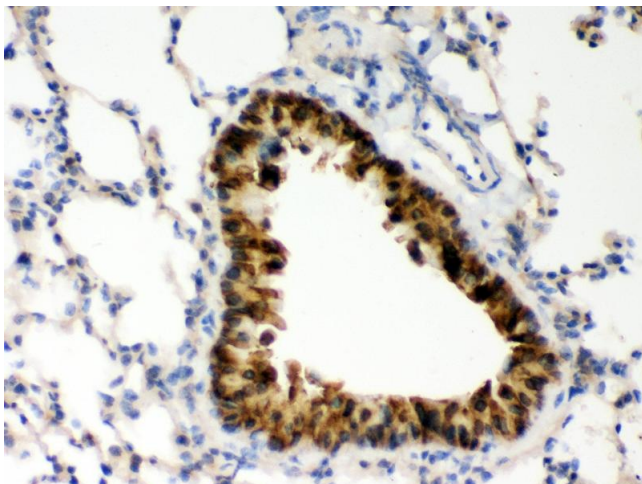
Western Blotting

Image 1.



#### Immunohistochemistry

**Image 2.** Anti- COMT Picoband antibody, IHC(P) IHC(P): Rat Lung Tissue



#### Immunohistochemistry

**Image 3.** Anti- COMT Picoband antibody, IHC(P) IHC(P): Mouse Lung Tissue

Please check the [product details page](#) for more images. Overall 8 images are available for ABIN3043815.