

Datasheet for ABIN3043816
anti-CTBP1 antibody (C-Term)

4 Images

[Go to Product page](#)

Overview

Quantity:	100 µg
Target:	CTBP1
Binding Specificity:	AA 409-440, C-Term
Reactivity:	Human, Mouse, Rat
Host:	Rabbit
Clonality:	Polyclonal
Application:	Western Blotting (WB), Immunohistochemistry (Paraffin-embedded Sections) (IHC (p))

Product Details

Purpose:	Rabbit IgG polyclonal antibody for C-terminal-binding protein 1(CTBP1) detection. Tested with WB, IHC-P in Human,Mouse,Rat.
Immunogen:	A synthetic peptide corresponding to a sequence at the C-terminus of human CtBP1 (409-440aa HGLPPVAHPPHAPSPGQTVKPEADRDHASDQL), different from the related mouse sequence by one amino acid, and from the related rat sequence by two amino acids.
Sequence:	HGLPPVAHPP HAPSPGQTVK PEADRDHASD QL
Isotype:	IgG
Cross-Reactivity (Details):	No cross reactivity with other proteins.
Characteristics:	<p>Rabbit IgG polyclonal antibody for C-terminal-binding protein 1(CTBP1) detection. Tested with WB, IHC-P in Human,Mouse,Rat.</p> <p>Gene Name: C-terminal binding protein 1</p> <p>Protein Name: C-terminal-binding protein 1</p>

Product Details

Purification: Immunogen affinity purified.

Target Details

Target: CTBP1

Alternative Name: CTBP1 ([CTBP1 Products](#))

Background: CTBP1, C-terminal-binding protein 1, is a protein that in humans is encoded by the CTBP1 gene. The CtBP1 protein binds to the C-terminus of adenovirus E1A proteins. This gene is mapped to 4p16. This phosphoprotein is a transcriptional repressor (corepressor) and may play a role during cellular proliferation. This protein and the product of a second closely related gene, CTBP2, can dimerize. CtBP1 and CtBP2 preferentially associate with the E1A via a 5 amino acid motif, PLDLS, to repress E1A induced oncogenesis and cellular transformation. CtBP1 is expressed from embryo to adult, but CtBP2 is mainly expressed during embryogenesis. During skeletal and T cell development, CtBP1 and CtBP2 associate with the PLDLSL domain of δ EF1, a cellular zinc finger-homeodomain protein, and thereby enhances δ EF1-induced transcriptional silencing. In addition, CtBP complexes with CtIP, a 125 kDa protein that recognizes distinctly different protein motifs from CtBP. CtIP binds to the BRCT repeats within the breast cancer gene BRCA1 and enables CtBP to influence BRCA1 activity. Both proteins can also interact with a polycomb group protein complex which participates in regulation of gene expression during development. Alternative splicing of transcripts from this gene results in multiple transcript variants.

Synonyms: BARS antibody|brefeldin A- ribosylated substrate antibody|C terminal binding protein 1 antibody|C-terminal-binding protein 1 antibody|CTBP antibody|CtBP1 antibody|Ctbp1 antibody| CTBP1_HUMAN antibody|MGC104684 antibody

Gene ID: 1487

UniProt: [Q13363](#)

Pathways: [Retinoic Acid Receptor Signaling Pathway](#)

Application Details

Application Notes: WB: Concentration: 0.1-0.5 μ g/mL, Tested Species: Human, Rat
IHC-P: Concentration: 0.5-1 μ g/mL, Tested Species: Human, Mouse, Rat, Epitope Retrieval by Heat: Boiling the paraffin sections in 10 mM citrate buffer, pH 6.0, for 20 mins is required for the staining of formalin/paraffin sections.

Application Details

Notes: Tested Species: Species with positive results. Other applications have not been tested.
Optimal dilutions should be determined by end users.

Comment: Antibody can be supported by chemiluminescence kit ABIN921124 in WB, supported by ABIN921231 in IHC(P).

Restrictions: For Research Use only

Handling

Format: Lyophilized

Reconstitution: Add 0.2 mL of distilled water will yield a concentration of 500 µg/mL.

Concentration: 500 µg/mL

Buffer: Each vial contains 5 mg BSA, 0.9 mg NaCl, 0.2 mg Na₂HPO₄, 0.05 mg Sodium azide.

Preservative: Sodium azide

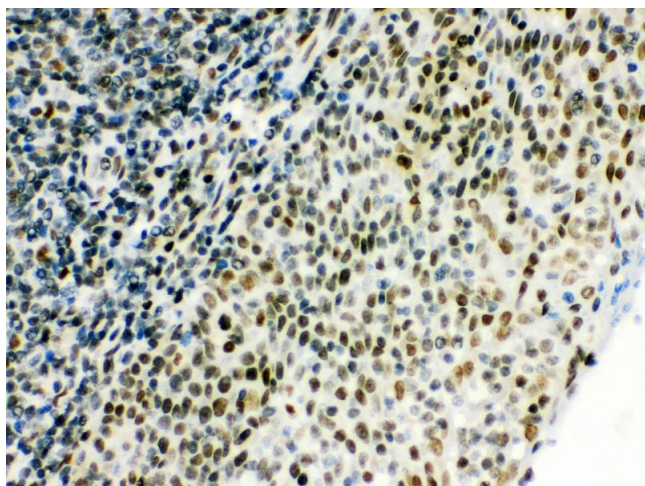
Precaution of Use: This product contains Sodium azide: a POISONOUS AND HAZARDOUS SUBSTANCE which should be handled by trained staff only.

Handling Advice: Avoid repeated freezing and thawing.

Storage: 4 °C/-20 °C

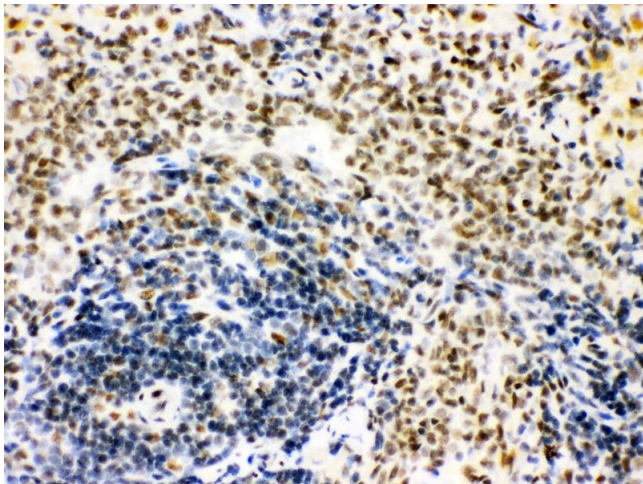
Storage Comment: At -20°C for one year. After reconstitution, at 4°C for one month.
It can also be aliquotted and stored frozen at -20 °C for a longer time. Avoid repeated freezing and thawing.

Validation report #300031 for Immunohistochemistry (IHC)



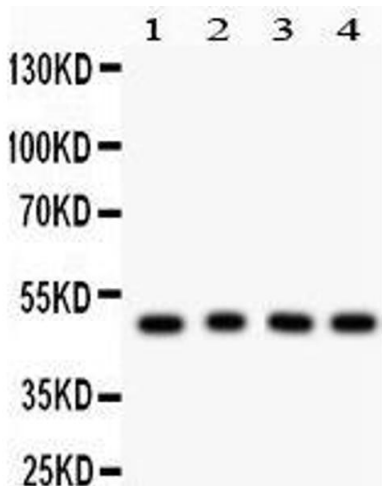
Immunohistochemistry

Image 1. Anti- CTBP1 Picoband antibody, IHC(P) IHC(P):
Human Tonsil Tissue



Immunohistochemistry

Image 2. Anti- CTBP1 Picoband antibody, IHC(P) IHC(P): Rat Spleen Tissue



Western Blotting

Image 3. Anti- CTBP1 Picoband antibody, Western blotting
All lanes: Anti CTBP1 at 0.5ug/ml Lane 1: Rat Lung Tissue Lysate at 50ug Lane 2: Rat Kidney Tissue Lysate at 50ug Lane 3: COLO320 Whole Cell Lysate at 40ug Lane 4: MCF-7 Whole Cell Lysate at 40ug Predicted bind size: 48KD Observed bind size: 48KD

Please check the [product details page](#) for more images. Overall 4 images are available for ABIN3043816.