



[Go to Product page](#)

Datasheet for ABIN3043817
anti-CTCF antibody (AA 521-727)

4 Images

Overview

Quantity:	100 µg
Target:	CTCF
Binding Specificity:	AA 521-727
Reactivity:	Human, Mouse, Rat
Host:	Rabbit
Clonality:	Polyclonal
Conjugate:	This CTCF antibody is un-conjugated
Application:	Western Blotting (WB), Immunohistochemistry (Paraffin-embedded Sections) (IHC (p))

Product Details

Purpose:	Rabbit IgG polyclonal antibody for Transcriptional repressor CTCF(CTCF) detection. Tested with WB, IHC-P in Human,Mouse,Rat.
Immunogen:	E.coli-derived human CTCF recombinant protein (Position: K521-R727). Human CTCF shares 94% and 93.1% amino acid (aa) sequence identity with mouse and rat CTCF, respectively.
Isotype:	IgG
Cross-Reactivity (Details):	No cross reactivity with other proteins.
Characteristics:	Rabbit IgG polyclonal antibody for Transcriptional repressor CTCF(CTCF) detection. Tested with WB, IHC-P in Human,Mouse,Rat. Gene Name: CCCTC-binding factor (zinc finger protein) Protein Name: Transcriptional repressor CTCF
Purification:	Immunogen affinity purified.

Target Details

Target: CTCF

Alternative Name: CTCF ([CTCF Products](#))

Background: Transcriptional repressor CTCF also known as 11-zinc finger protein or CCCTC-binding factor is a transcription factor that in humans is encoded by the CTCF gene. This gene is a member of the BORIS + CTCF gene family and encodes a transcriptional regulator protein with 11 highly conserved zinc finger (ZF) domains. And this nuclear protein is able to use different combinations of the ZF domains to bind different DNA target sequences and proteins. Depending upon the context of the site, the protein can bind a histone acetyltransferase (HAT)-containing complex and function as a transcriptional activator or bind a histone deacetylase (HDAC)-containing complex and function as a transcriptional repressor. If the protein is bound to a transcriptional insulator element, it can block communication between enhancers and upstream promoters, thereby regulating imprinted expression. Mutations in this gene have been associated with invasive breast cancers, prostate cancers, and Wilms' tumors. Alternatively spliced transcript variants encoding different isoforms have been found for this gene.

Synonyms: 11 zinc finger protein antibody|11 zinc finger transcriptional repressor antibody|11-zinc finger protein antibody|CCCTC binding factor (zinc finger protein) antibody|CCCTC binding factor antibody|CCCTC-binding factor antibody|Ctcf antibody|CTCF_HUMAN antibody|CTCF_L paralog antibody|Transcriptional repressor CTCF antibody

Gene ID: 10664

UniProt: [P49711](#)

Application Details

Application Notes: WB: Concentration: 0.1-0.5 µg/mL, Tested Species: Human, Rat
IHC-P: Concentration: 0.5-1 µg/mL, Tested Species: Human, Mouse, Rat, Epitope Retrieval by Heat: Boiling the paraffin sections in 10 mM citrate buffer, pH 6.0, for 20 mins is required for the staining of formalin/paraffin sections.
Notes: Tested Species: Species with positive results. Other applications have not been tested. Optimal dilutions should be determined by end users.

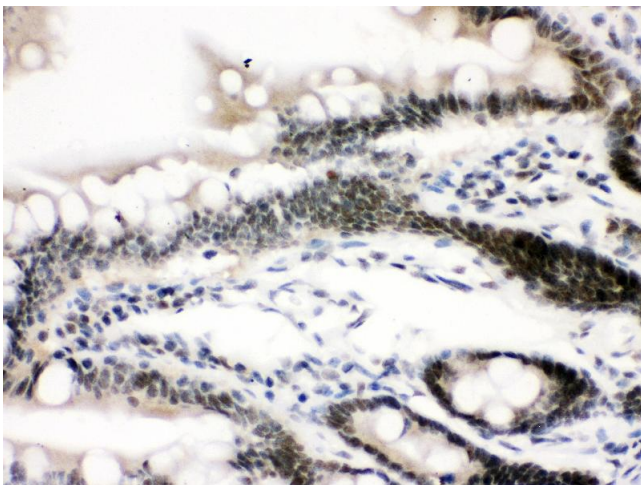
Comment: Antibody can be supported by chemiluminescence kit ABIN921124 in WB, supported by ABIN921231 in IHC(P).

Restrictions: For Research Use only

Handling

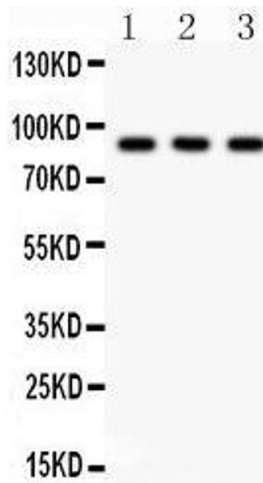
Format:	Lyophilized
Reconstitution:	Add 0.2 mL of distilled water will yield a concentration of 500 µg/mL.
Concentration:	500 µg/mL
Buffer:	Each vial contains 5 mg BSA, 0.9 mg NaCl, 0.2 mg Na ₂ HPO ₄ , 0.05 mg Sodium azide.
Preservative:	Sodium azide
Precaution of Use:	This product contains Sodium azide: a POISONOUS AND HAZARDOUS SUBSTANCE which should be handled by trained staff only.
Handling Advice:	Avoid repeated freezing and thawing.
Storage:	4 °C/-20 °C
Storage Comment:	At -20°C for one year. After reconstitution, at 4°C for one month. It can also be aliquotted and stored frozen at -20 °C for a longer time. Avoid repeated freezing and thawing.

Images



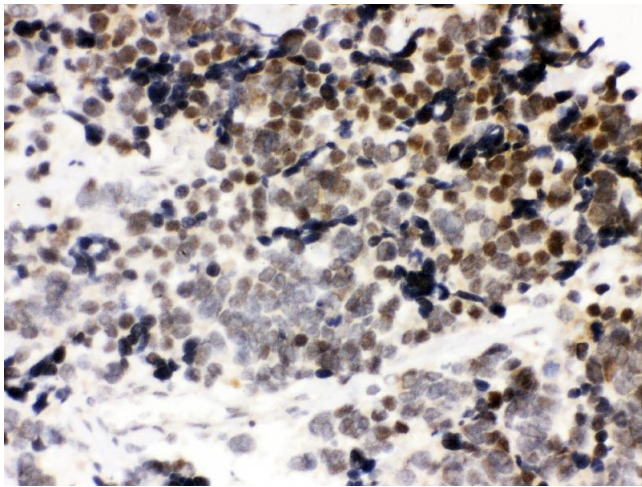
Immunohistochemistry

Image 1. Anti-CTCF Picoband antibody, IHC(P) IHC(P): Rat Intestine Tissue



Western Blotting

Image 2. Anti-CTCF Picoband antibody, Western blotting All lanes: Anti CTCF at 0.5ug/ml Lane 1: Rat Thymus Tissue Lysate at 50ug Lane 2: Rat Gaster Tissue Lysate at 50ug Lane 3: Human Placenta Tissue Lysate at 50ug Predicted bind size: 88KD Observed bind size: 88KD



Immunohistochemistry

Image 3. Anti-CTCF Picoband antibody, IHC(P) IHC(P): Human Lung Cancer Tissue

Please check the [product details page](#) for more images. Overall 4 images are available for ABIN3043817.