

Datasheet for ABIN3043821

## anti-CYP2E1 antibody (AA 1-310)

5 Images

3 Publications



[Go to Product page](#)

### Overview

Quantity:	100 µg
Target:	CYP2E1
Binding Specificity:	AA 1-310
Reactivity:	Human, Mouse, Rat
Host:	Rabbit
Clonality:	Polyclonal
Conjugate:	This CYP2E1 antibody is un-conjugated
Application:	Western Blotting (WB), Immunohistochemistry (Paraffin-embedded Sections) (IHC (p))

### Product Details

Purpose:	Rabbit IgG polyclonal antibody for Cytochrome P450 2E1(CYP2E1) detection. Tested with WB, IHC-P in Human,Mouse,Rat.
Immunogen:	E.coli-derived human CYP2E1 recombinant protein (Position: M1-Y310). Human CYP2E1 shares 73% and 74% amino acid (aa) sequences identity with mouse and rat CYP2E1, respectively.
Isotype:	IgG
Cross-Reactivity (Details):	No cross reactivity with other proteins.
Characteristics:	<p>Rabbit IgG polyclonal antibody for Cytochrome P450 2E1(CYP2E1) detection. Tested with WB, IHC-P in Human,Mouse,Rat.</p> <p>Gene Name: cytochrome P450, family 2, subfamily E, polypeptide 1</p> <p>Protein Name: Cytochrome P450 2E1</p>
Purification:	Immunogen affinity purified.

## Target Details

Target:	CYP2E1
Alternative Name:	CYP2E1 ( <a href="#">CYP2E1 Products</a> )
Background:	<p>Cytochrome P450 2E1 (abbreviated CYP2E1), a member of the cytochrome P450 mixed-function oxidase system, is involved in the metabolism of xenobiotics in the body. In humans, the CYP2E1 enzyme is encoded by the CYP2E1 gene. It is mapped to 10q26.3. While it is involved in the oxidative metabolism of a small range of substrates (mostly small polar molecules), there are many important drug interactions mediated by CYP2E1. Most drugs undergo deactivation by CYP2E1, either directly or by facilitated excretion from the body. Also, many substances are bioactivated by CYP2E1 to form their active compounds. In addition, CYP2E1 is an important enzyme for the conversion of ethanol to acetaldehyde and to acetate in humans. In the conversion sequence of acetyl-CoA to glucose, CYP2E1 transforms acetone via acetol into propylene glycol and methylglyoxal, the precursors of pyruvate, acetate and lactate.</p> <p>Synonyms: 4-nitrophenol 2-hydroxylase antibody CP2E1_HUMAN antibody CPE 1 antibody CPE1 antibody CYP2E antibody CYP2E1 antibody CYP1IIE1 antibody Cytochrome P450 2E1 antibody cytochrome P450 family 2 subfamily E polypeptide 1 antibody Cytochrome P450 isozyme 3A antibody Cytochrome P450 LM3A antibody Cytochrome P450 subfamily IIE (ethanol inducible) polypeptide 1 antibody Cytochrome P450, family 2, subfamily e, polypeptide 1 antibody cytochrome P450, subfamily IIE (ethanol-inducible), polypeptide 1 antibody Cytochrome P450, subfamily IIE antibody Cytochrome P450-ALC antibody Cytochrome P450-J antibody Cytochrome P450RLM6 antibody EC 1.14.13.- antibody EC 1.14.13.n7 antibody Ethanol inducible p450 antibody Ethanol-inducible P450 antibody flavoprotein-linked monooxygenase antibody MGC133529 antibody microsomal monooxygenase antibody OTTHUMP00000020813 antibody OTTHUMP00000046571 antibody P450 ALC antibody P450 J antibody P450-J antibody P450C2E antibody P450J antibody P450RLM6 antibody xenobiotic monooxygenase antibody</p>
Gene ID:	1571
UniProt:	<a href="#">P05181</a>

## Application Details

Application Notes:	<p>WB: Concentration: 0.1-0.5 µg/mL, Tested Species: Human, Rat, The detection limit for CYP2E1 is approximately 0.2 ng/lane under reducing conditions.</p> <p>IHC-P: Concentration: 0.5-1 µg/mL, Tested Species: Mouse, Rat, Predicted Species: Human, Epitope Retrieval by Heat: Boiling the paraffin sections in 10 mM citrate buffer, pH 6.0, for</p>
--------------------	---

## Application Details

20 mins is required for the staining of formalin/paraffin sections.

Notes: Tested Species: Species with positive results. Predicted Species: Species predicted to be fit for the product based on sequence similarities. Other applications have not been tested.

Optimal dilutions should be determined by end users.

Comment: Antibody can be supported by chemiluminescence kit ABIN921124 in WB, supported by ABIN921231 in IHC(P).

Restrictions: For Research Use only

## Handling

Format: Lyophilized

Reconstitution: Add 0.2 mL of distilled water will yield a concentration of 500 µg/mL.

Concentration: 500 µg/mL

Buffer: Each vial contains 5 mg BSA, 0.9 mg NaCl, 0.2 mg Na<sub>2</sub>HPO<sub>4</sub>, 0.05 mg Sodium azide.

Preservative: Sodium azide

Precaution of Use: This product contains Sodium azide: a POISONOUS AND HAZARDOUS SUBSTANCE which should be handled by trained staff only.

Handling Advice: Avoid repeated freezing and thawing.

Storage: 4 °C/-20 °C

Storage Comment: At -20°C for one year. After reconstitution, at 4°C for one month.  
It can also be aliquotted and stored frozen at -20 °C for a longer time. Avoid repeated freezing and thawing.

## Publications

Product cited in: Yang, Gao, Wu, Yu, Li, Meng, Li, Yan, Jin: "Epigallocatechin-3-gallate attenuates neointimal hyperplasia in a rat model of carotid artery injury by inhibition of high mobility group box 1 expression." in: **Experimental and therapeutic medicine**, Vol. 14, Issue 3, pp. 1975-1982, (2017) ([PubMed](#)).

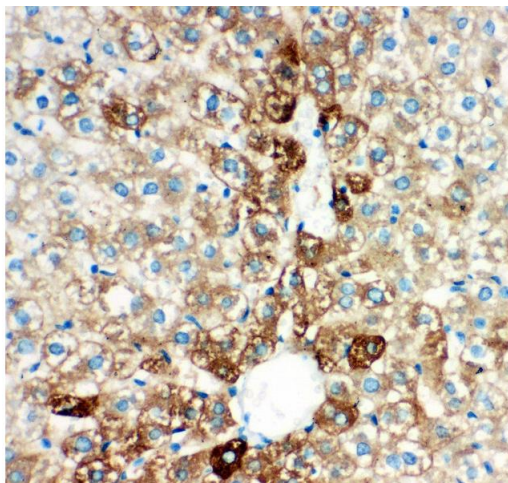
Yu, Yu, Liu, Yu, Liu, Liu, Su, Jiang, Chen: "Ethyl pyruvate attenuated coxsackievirus B3-induced acute viral myocarditis by suppression of HMGB1/RAGE/NF-KB pathway." in: **SpringerPlus**, Vol. 5, pp. 215, (2016) ([PubMed](#)).

Qin, Niu, Wang, Xu, Qiao, Gu: "Heparanase induced by advanced glycation end products (AGEs) promotes macrophage migration involving RAGE and PI3K/AKT pathway." in: **Cardiovascular diabetology**, Vol. 12, pp. 37, (2013) ([PubMed](#)).

Liu, Wang, Feng, Ma, Fu, Song, Jia, Ma: "Hypoglycemic and antioxidant activities of paeonol and its beneficial effect on diabetic encephalopathy in streptozotocin-induced diabetic rats." in: **Journal of medicinal food**, Vol. 16, Issue 7, pp. 577-86, (2013) ([PubMed](#)).

Wang, Zhang, Liu, Cui, Yang, Li, Du: "Tanshinone II A down-regulates HMGB1, RAGE, TLR4, NF-kappaB expression, ameliorates BBB permeability and endothelial cell function, and protects rat brains against focal ischemia." in: **Brain research**, Vol. 1321, pp. 143-51, (2010) ([PubMed](#)).

## Validation report #300030 for Immunohistochemistry (IHC)



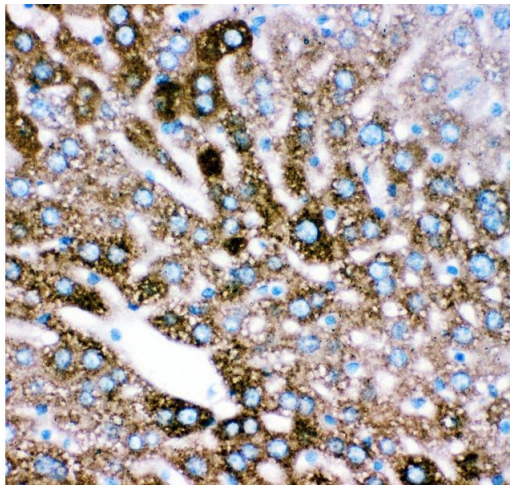
### Immunohistochemistry

**Image 1.** Anti- CYP2E1 antibody, IHC(P) IHC(P): Rat Liver Tissue



### Western Blotting

**Image 2.**



#### Immunohistochemistry

**Image 3.** Anti- CYP2E1 antibody, IHC(P) IHC(P): Mouse Liver Tissue

Please check the [product details page](#) for more images. Overall 5 images are available for ABIN3043821.