



[Go to Product page](#)

Datasheet for ABIN3043825

## anti-EWSR1 antibody (Middle Region)

### 4 Images

#### Overview

Quantity:	100 µg
Target:	EWSR1
Binding Specificity:	AA 369-399, Middle Region
Reactivity:	Human, Mouse, Rat
Host:	Rabbit
Clonality:	Polyclonal
Conjugate:	This EWSR1 antibody is un-conjugated
Application:	Western Blotting (WB), Immunohistochemistry (Paraffin-embedded Sections) (IHC (p))

#### Product Details

Purpose:	Rabbit IgG polyclonal antibody for RNA-binding protein EWS(EWSR1) detection. Tested with WB, IHC-P in Human,Mouse,Rat.
Immunogen:	A synthetic peptide corresponding to a sequence in the middle region of human EWSR1 (369-399aa NDSVTLDDLADFFKQCGVVKMKNKRTGQPMIH), different from the related mouse sequence by one amino acid.
Sequence:	NDSVTLDDLA DFFKQCGVVK MNKRTGQPMI H
Isotype:	IgG
Cross-Reactivity (Details):	No cross reactivity with other proteins.
Characteristics:	Rabbit IgG polyclonal antibody for RNA-binding protein EWS(EWSR1) detection. Tested with WB, IHC-P in Human,Mouse,Rat. Gene Name: EWS RNA-binding protein 1

## Product Details

---

Protein Name: RNA-binding protein EWS

Purification: Immunogen affinity purified.

## Target Details

---

Target: EWSR1

Alternative Name: EWSR1 ([EWSR1 Products](#))

Background: This gene encodes a multifunctional protein that is involved in various cellular processes, including gene expression, cell signaling, and RNA processing and transport. The protein includes an N-terminal transcriptional activation domain and a C-terminal RNA-binding domain. Chromosomal translocations between this gene and various genes encoding transcription factors result in the production of chimeric proteins that are involved in tumorigenesis. These chimeric proteins usually consist of the N-terminal transcriptional activation domain of this protein fused to the C-terminal DNA-binding domain of the transcription factor protein. Mutations in this gene, specifically a t(11,22)(q24,q12) translocation, are known to cause Ewing sarcoma as well as neuroectodermal and various other tumors. Alternative splicing of this gene results in multiple transcript variants. Related pseudogenes have been identified on chromosomes 1 and 14.

Synonyms: bK984G1.4 antibody|bK984G1.4 Ewing sarcoma breakpoint region 1 protein antibody|Ewing sarcoma breakpoint region 1 antibody|Ewing sarcoma breakpoint region 1 protein antibody|Ewings sarcoma EWS Fli1 type 1 oncogene antibody|EWS antibody|EWS oncogene antibody| EWS RNA binding protein 1 antibody|EWS\_HUMAN antibody|EWSR 1 antibody|Ewsr1 antibody|EWSR1 protein antibody|RNA binding protein EWS antibody|RNA-binding protein EWS antibody

Gene ID: 2130

UniProt: [Q01844](#)

## Application Details

---

Application Notes: WB: Concentration: 0.1-0.5 µg/mL, Tested Species: Human, Rat  
IHC-P: Concentration: 0.5-1 µg/mL, Tested Species: Human, Mouse, Rat, Epitope Retrieval by Heat: Boiling the paraffin sections in 10 mM citrate buffer, pH 6.0, for 20 mins is required for the staining of formalin/paraffin sections.  
Notes: Tested Species: Species with positive results. Other applications have not been tested.

## Application Details

Optimal dilutions should be determined by end users.

Comment: Antibody can be supported by chemiluminescence kit ABIN921124 in WB, supported by ABIN921231 in IHC(P).

Restrictions: For Research Use only

## Handling

Format: Lyophilized

Reconstitution: Add 0.2 mL of distilled water will yield a concentration of 500 µg/mL.

Concentration: 500 µg/mL

Buffer: Each vial contains 5 mg BSA, 0.9 mg NaCl, 0.2 mg Na<sub>2</sub>HPO<sub>4</sub>, 0.05 mg Sodium azide.

Preservative: Sodium azide

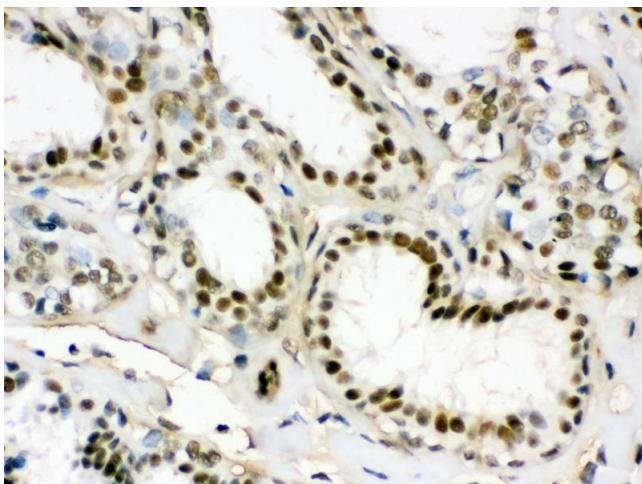
Precaution of Use: This product contains Sodium azide: a POISONOUS AND HAZARDOUS SUBSTANCE which should be handled by trained staff only.

Handling Advice: Avoid repeated freezing and thawing.

Storage: 4 °C/-20 °C

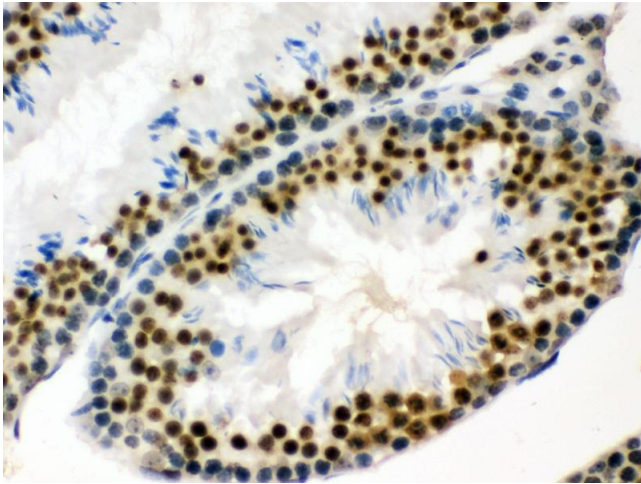
Storage Comment: At -20°C for one year. After reconstitution, at 4°C for one month.  
It can also be aliquotted and stored frozen at -20 °C for a longer time. Avoid repeated freezing and thawing.

## Images



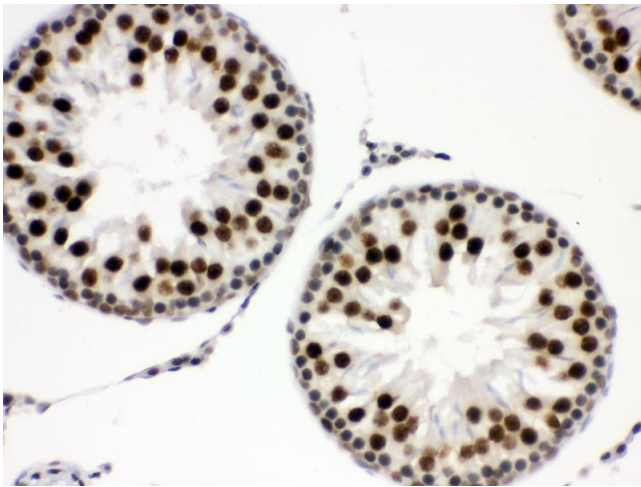
### Immunohistochemistry

**Image 1.** Anti- EWSR1 Picoband antibody, IHC(P) IHC(P):  
Human Mammary Cancer Tissue



#### Immunohistochemistry

**Image 2.** Anti- EWSR1 Picoband antibody, IHC(P) IHC(P):  
Mouse Testis Tissue



#### Immunohistochemistry

**Image 3.** Anti- EWSR1 Picoband antibody, IHC(P) IHC(P):  
Rat Testis Tissue

Please check the [product details page](#) for more images. Overall 4 images are available for ABIN3043825.