

Datasheet for ABIN3043834

**anti-Glutathione Peroxidase 1 antibody (Middle Region)**

5 Images

[Go to Product page](#)

## Overview

Quantity:	100 µg
Target:	Glutathione Peroxidase 1 (GPX1)
Binding Specificity:	AA 116-146, Middle Region
Reactivity:	Human, Mouse, Rat
Host:	Rabbit
Clonality:	Polyclonal
Conjugate:	This Glutathione Peroxidase 1 antibody is un-conjugated
Application:	Western Blotting (WB), Immunohistochemistry (Paraffin-embedded Sections) (IHC (p))

## Product Details

Purpose:	Rabbit IgG polyclonal antibody for Glutathione peroxidase 1(GPX1) detection. Tested with WB, IHC-P in Human,Mouse,Rat.
Immunogen:	A synthetic peptide corresponding to a sequence in the middle region of human GPX1(116-146aa EVNGAGAHPLFAFLREALPAPSDDATALMTD), different from the related mouse sequence by six amino acids and from the related rat sequence by five amino acids.
Sequence:	EVNGAGAHPL FAFLREALPA PSDDATALMT D
Isotype:	IgG
Cross-Reactivity (Details):	No cross reactivity with other proteins.
Characteristics:	Rabbit IgG polyclonal antibody for Glutathione peroxidase 1(GPX1) detection. Tested with WB, IHC-P in Human,Mouse,Rat. Gene Name: glutathione peroxidase 1

## Product Details

Protein Name: Glutathione peroxidase 1

Purification: Immunogen affinity purified.

## Target Details

Target: Glutathione Peroxidase 1 (GPX1)

Alternative Name: GPX1 ([GPX1 Products](#))

Background: Glutathione peroxidase 1, also known as, GPX-1 is an enzyme that in humans is encoded by the GPX1 gene. It is mapped to 3p21.31. This gene encodes a member of the glutathione peroxidase family, consisting of eight known glutathione peroxidases (Gpx1-8) in humans. Glutathione peroxidase functions in the detoxification of hydrogen peroxide, and is one of the most important antioxidant enzymes in humans. It has been reported that the protein encoded by this gene protects from CD95-induced apoptosis in cultured breast cancer cells and inhibits 5-lipoxygenase in blood cells, and its overexpression delays endothelial cell growth and increases resistance to toxic challenges. GPX1 is one of only a few proteins known in higher vertebrates to contain selenocysteine, which occurs at the active site of glutathione peroxidase and is coded by the nonsense (stop) codon TGA.

Synonyms: AL033363 antibody|Cellular glutathione peroxidase antibody|Glutathione peroxidase 1 antibody|Glutathione peroxidase antibody|GPx 1 antibody|GPx-1 antibody|GPX1 antibody|GPX1\_HUMAN antibody|GPXD antibody|GSHPx-1 antibody|GSHPX1 antibody|MGC14399 antibody|MGC88245 antibody

Gene ID: 2876

UniProt: [P07203](#)

Pathways: [Thyroid Hormone Synthesis](#), [Sensory Perception of Sound](#), [Skeletal Muscle Fiber Development](#), [Cell RedoxHomeostasis](#), [Negative Regulation of intrinsic apoptotic Signaling](#), [SARS-CoV-2 Protein Interactome](#)

## Application Details

Application Notes: WB: Concentration: 0.1-0.5 µg/mL, Tested Species: Human, The detection limit for GPX1 is approximately 0.25 ng/lane under reducing conditions.  
IHC-P: Concentration: 0.5-1 µg/mL, Tested Species: Human, Mouse, Rat, Epitope Retrieval by Heat: Boiling the paraffin sections in 10 mM citrate buffer, pH 6.0, for 20 mins is required for the staining of formalin/paraffin sections.

## Application Details

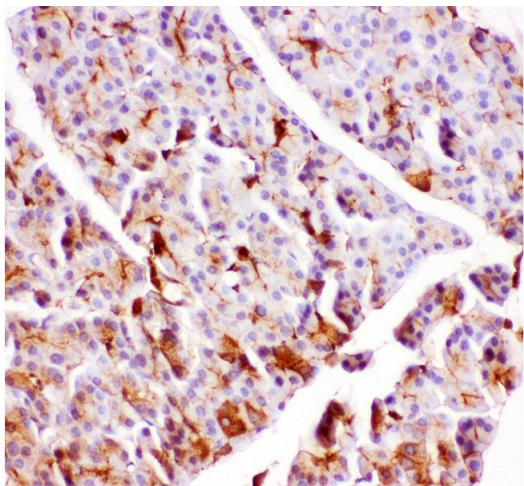
Notes: Tested Species: Species with positive results. Other applications have not been tested.  
Optimal dilutions should be determined by end users.

Comment:	Antibody can be supported by chemiluminescence kit ABIN921124 in WB, supported by ABIN921231 in IHC(P).
Restrictions:	For Research Use only

## Handling

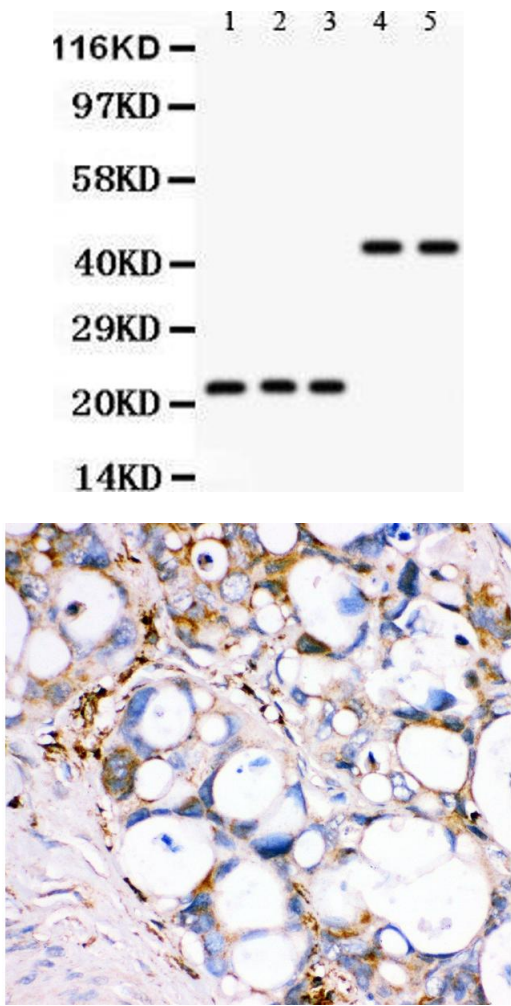
Format:	Lyophilized
Reconstitution:	Add 0.2 mL of distilled water will yield a concentration of 500 µg/mL.
Concentration:	500 µg/mL
Buffer:	Each vial contains 5 mg BSA, 0.9 mg NaCl, 0.2 mg Na2HPO4, 0.05 mg Sodium azide.
Preservative:	Sodium azide
Precaution of Use:	This product contains Sodium azide: a POISONOUS AND HAZARDOUS SUBSTANCE which should be handled by trained staff only.
Handling Advice:	Avoid repeated freezing and thawing.
Storage:	4 °C/-20 °C
Storage Comment:	At -20°C for one year. After reconstitution, at 4°C for one month. It can also be aliquotted and stored frozen at -20 °C for a longer time. Avoid repeated freezing and thawing.

## Images



**Immunohistochemistry**

**Image 1.** Anti- GPX1 antibody, IHC(P) IHC(P): Rat Pancreas Tissue



#### Western Blotting

**Image 2.** Anti- GPX1 antibody, Western blotting All lanes: Anti GPX1 at 0.5ug/ml Lane 1: Rat Kidney Tissue Lysate at 50ug Lane 2: Mouse Kidney Tissue Lysate at 50ug Lane 3: Rat Spleen Tissue Lysate at 50ug Lane 4: HELA Whole Cell Lysate at 40ug Lane 5: JURKAT Whole Cell Lysate at 40ug Predicted bind size: 22,44KD Observed bind size: 22,44KD

#### Immunohistochemistry

**Image 3.** Anti- GPX1 antibody, IHC(P) IHC(P): Human Intestinal Cancer Tissue

Please check the [product details page](#) for more images. Overall 5 images are available for ABIN3043834.