

Datasheet for ABIN3043842
anti-HLA-A antibody (N-Term)

3 Images

[Go to Product page](#)

Overview

Quantity:	100 µg
Target:	HLA-A
Binding Specificity:	AA 82-106, N-Term
Reactivity:	Human, Mouse, Rat
Host:	Rabbit
Clonality:	Polyclonal
Conjugate:	This HLA-A antibody is un-conjugated
Application:	Western Blotting (WB), Immunohistochemistry (Paraffin-embedded Sections) (IHC (p))

Product Details

Purpose:	Rabbit IgG polyclonal antibody for HLA class I histocompatibility antigen, A-2 alpha chain(HLA-A) detection. Tested with WB, IHC-P in Human,Mouse,Rat.
Immunogen:	A synthetic peptide corresponding to a sequence at the N-terminus of human HLA A (82-106aa EYWDGETRKYKAHSQTHRVDLGTLR).
Sequence:	EYWDGETRKY KAHSQTHRVD LGTLR
Isotype:	IgG
Cross-Reactivity (Details):	No cross reactivity with other proteins.
Characteristics:	<p>Rabbit IgG polyclonal antibody for HLA class I histocompatibility antigen, A-2 alpha chain(HLA-A) detection. Tested with WB, IHC-P in Human,Mouse,Rat.</p> <p>Gene Name: major histocompatibility complex, class I, A</p> <p>Protein Name: HLA class I histocompatibility antigen, A-2 alpha chain</p>

Product Details

Purification: Immunogen affinity purified.

Target Details

Target: HLA-A

Alternative Name: HLA-A ([HLA-A Products](#))

Background: HLA-A, namely HLA A, is a group of human leukocyte antigens (HLA) that are coded for by the HLA-A locus, which is located at human chromosome 6p21.3. HLA is simply the major histocompatibility complex (MHC) specific to humans. HLA-A is one of three major types of human MHC class I cell surface receptors. The others are HLA-B and HLA-C. And it is critical to the cytotoxic t-cell controlled immune response to viruses and other intracellular pathogens. Because each HLA-A gene has a high affinity for slightly different peptides, certain HLA-As are associated with increased risk, more rapid progression, and/or increased severity of many diseases. For similar reasons, HLA-A matching is essential to successful tissue transplants.

Synonyms: A 28 antibody|A 9 antibody|Antigen presenting molecule antibody|Aw 24 antibody|Aw 68 antibody|CLASS I HISTOCOMPATIBILITY ANTIGEN antibody|H2 K1 antibody|H2K antibody|HLA A antibody|HLA class I histocompatibility antigen A 1 alpha chain antibody|HLA class I histocompatibility antigen A 11 alpha chain antibody|HLA class I histocompatibility antigen A 2 alpha chain antibody|HLA class I histocompatibility antigen A 24 alpha chain antibody|HLA class I histocompatibility antigen A 3 alpha chain antibody|HLA class I histocompatibility antigen A 30 alpha chain antibody|HLA class I histocompatibility antigen A 32 alpha chain antibody|HLA class I histocompatibility antigen A 68 alpha chain antibody|HLA class I histocompatibility antigen, A 1 alpha chain antibody|HLAA antibody|Leukocyte antigen class I A antibody|Major histocompatibility complex class I A antibody|Major histocompatibility complex, class I, A antibody|MHC class I antigen A 1 antibody|MHC class I antigen A*11 antibody|MHC class I antigen A*2 antibody|MHC class I antigen A*24 antibody|MHC class I antigen A*3 antibody|MHC class I antigen A*30 antibody|MHC class I antigen A*32 antibody|MHC class I antigen A*68 antibody|MHC class I antigen HLA A heavy chain antibody|MHC class I heavy chain H2 K antibody

Gene ID: 3105

UniProt: [P01892](#)

Pathways: [TCR Signaling](#), [Regulation of Leukocyte Mediated Immunity](#), [Positive Regulation of Immune Effector Process](#), [Cancer Immune Checkpoints](#), [Human Leukocyte Antigen \(HLA\) in Adaptive Immune Response](#)

Application Details

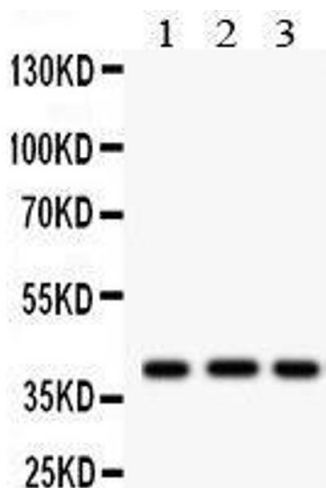
Application Notes:	WB: Concentration: 0.1-0.5 µg/mL, Tested Species: Human, Mouse, The detection limit for HLA A is approximately 0.1 ng/lane under reducing conditions. IHC-P: Concentration: 0.5-1 µg/mL, Tested Species: Human, Rat, Epitope Retrieval by Heat: Boiling the paraffin sections in 10 mM citrate buffer, pH 6.0, for 20 mins is required for the staining of formalin/paraffin sections. Notes: Tested Species: Species with positive results. Other applications have not been tested. Optimal dilutions should be determined by end users.
--------------------	--

Comment:	Antibody can be supported by chemiluminescence kit ABIN921124 in WB, supported by ABIN921231 in IHC(P).
----------	---

Restrictions:	For Research Use only
---------------	-----------------------

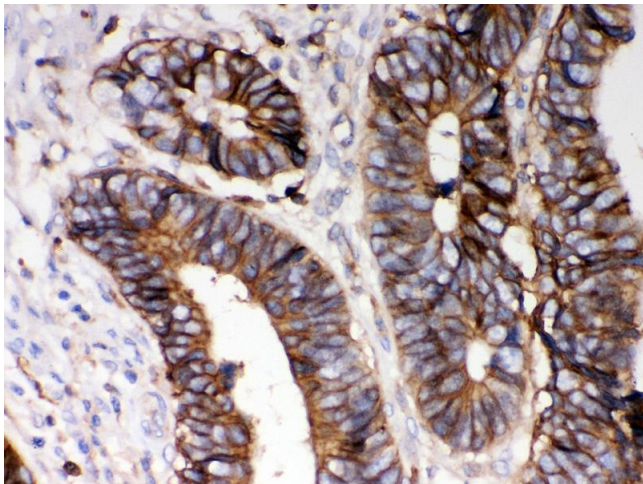
Handling

Format:	Lyophilized
Reconstitution:	Add 0.2 mL of distilled water will yield a concentration of 500 µg/mL.
Concentration:	500 µg/mL
Buffer:	Each vial contains 5 mg BSA, 0.9 mg NaCl, 0.2 mg Na ₂ HPO ₄ , 0.05 mg Sodium azide.
Preservative:	Sodium azide
Precaution of Use:	This product contains Sodium azide: a POISONOUS AND HAZARDOUS SUBSTANCE which should be handled by trained staff only.
Handling Advice:	Avoid repeated freezing and thawing.
Storage:	4 °C/-20 °C
Storage Comment:	At -20°C for one year. After reconstitution, at 4°C for one month. It can also be aliquotted and stored frozen at -20 °C for a longer time. Avoid repeated freezing and thawing.



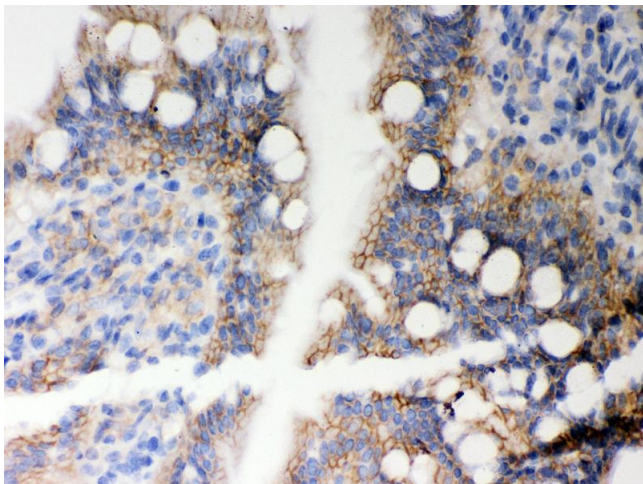
Western Blotting

Image 1. Anti- HLA-A Picoband antibody, Western blotting
All lanes: Anti HLA-A at 0.5ug/ml Lane 1: U87 Whole Cell Lysate at 40ug Lane 2: HEPG2 Whole Cell Lysate at 40ug Lane 3: Mouse Brain Tissue Lysate at 50ug Predicted bind size: 41KD Observed bind size: 41KD



Immunohistochemistry

Image 2. Anti- HLA-A Picoband antibody,IHC(P) IHC(P): Human Intestinal Cancer Tissue



Immunohistochemistry

Image 3. Anti- HLA-A Picoband antibody,IHC(P) IHC(P): Rat Intestine Tissue