

Datasheet for ABIN3043843  
**anti-HLA-C antibody (C-Term)**

## 5 Images

[Go to Product page](#)

## Overview

Quantity:	100 µg
Target:	HLA-C
Binding Specificity:	AA 38-62, C-Term
Reactivity:	Human, Mouse, Rat
Host:	Rabbit
Clonality:	Polyclonal
Conjugate:	This HLA-C antibody is un-conjugated
Application:	Western Blotting (WB), Immunocytochemistry (ICC), Immunohistochemistry (Paraffin-embedded Sections) (IHC (p))

## Product Details

Purpose:	Rabbit IgG polyclonal antibody for MHC class I antigen(HLA-C) detection. Tested with WB, IHC-P, ICC in Human,Mouse,Rat.
Immunogen:	A synthetic peptide corresponding to a sequence at the C-terminus of human HLA-C(38-62aa EYWDRETQKYKRQAQADRVNLRKLR).
Sequence:	EYWDRETQKY KRQAQADRVN LRKLR
Isotype:	IgG
Cross-Reactivity (Details):	No cross reactivity with other proteins.
Characteristics:	Rabbit IgG polyclonal antibody for MHC class I antigen(HLA-C) detection. Tested with WB, IHC-P, ICC in Human,Mouse,Rat.  Gene Name: major histocompatibility complex, class I, C

## Product Details

Protein Name: MHC class I antigen

Purification: Immunogen affinity purified.

## Target Details

Target: HLA-C

Alternative Name: HLA-C ([HLA-C Products](#))

Background: HLA-C belongs to the HLA class I heavy chain paralogues. This class I molecule is a heterodimer consisting of a heavy chain and a light chain (beta-2 microglobulin). The heavy chain is anchored in the membrane. Class I molecules play a central role in the immune system by presenting peptides derived from endoplasmic reticulum lumen. They are expressed in nearly all cells. The heavy chain is approximately 45 kDa and its gene contains 8 exons. Exon one encodes the leader peptide, exons 2 and 3 encode the alpha1 and alpha2 domain, which both bind the peptide, exon 4 encodes the alpha3 domain, exon 5 encodes the transmembrane region, and exons 6 and 7 encode the cytoplasmic tail. Polymorphisms within exon 2 and exon 3 are responsible for the peptide binding specificity of each class one molecule. Typing for these polymorphisms is routinely done for bone marrow and kidney transplantation. Over one hundred HLA-C alleles have been described.

Synonyms: 1C07\_HUMAN antibody|Cw-7 alpha chain antibody|D6S204 antibody|HLA class I histocompatibility antigen antibody|HLA class I histocompatibility antigen, C alpha chain antibody|HLA class I histocompatibility antigen, Cw-1 alpha chain antibody|HLA-C antibody|HLA-C histocompatibility type antibody|HLA-Cw antibody|HLA-JY3 antibody|HLAC antibody|HLC-C antibody|human leukocyte antigen-C alpha chain antibody|major histocompatibility antigen HLA-C antibody|major histocompatibility complex, class I, C antibody|MHC class I antigen antibody|MHC class I antigen Cw 1 antibody|MHC class I antigen Cw\*7 antibody|MHC class I antigen heavy chain HLA-C antibody|PSORS1 antibody

Gene ID: 3107

Pathways: [Regulation of Leukocyte Mediated Immunity](#), [Positive Regulation of Immune Effector Process](#), [Human Leukocyte Antigen \(HLA\) in Adaptive Immune Response](#)

## Application Details

Application Notes: WB: Concentration: 0.1-0.5 µg/mL, Tested Species: Human, Rat, The detection limit for HLA-C is approximately 0.1 ng/lane under reducing conditions.

## Application Details

IHC-P: Concentration: 0.5-1 µg/mL, Tested Species: Human, Mouse, Rat, Epitope Retrieval by Heat: Boiling the paraffin sections in 10 mM citrate buffer, pH 6.0, for 20 mins is required for the staining of formalin/paraffin sections.

ICC: Concentration: 0.5-1 µg/mL, Tested Species: Human

Notes: Tested Species: Species with positive results. Other applications have not been tested.

Optimal dilutions should be determined by end users.

Comment: Antibody can be supported by chemiluminescence kit ABIN921124 in WB, supported by ABIN921231 in IHC(P) and ICC.

Restrictions: For Research Use only

## Handling

Format: Lyophilized

Reconstitution: Add 0.2 mL of distilled water will yield a concentration of 500 µg/mL.

Concentration: 500 µg/mL

Buffer: Each vial contains 5 mg BSA, 0.9 mg NaCl, 0.2 mg Na<sub>2</sub>HPO<sub>4</sub>, 0.05 mg Sodium azide.

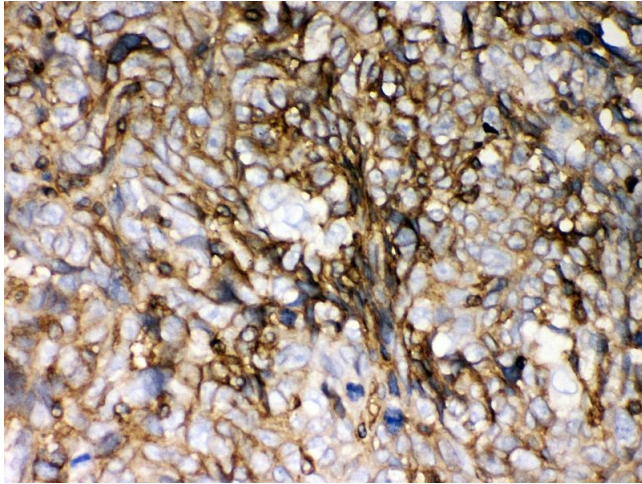
Preservative: Sodium azide

Precaution of Use: This product contains Sodium azide: a POISONOUS AND HAZARDOUS SUBSTANCE which should be handled by trained staff only.

Handling Advice: Avoid repeated freezing and thawing.

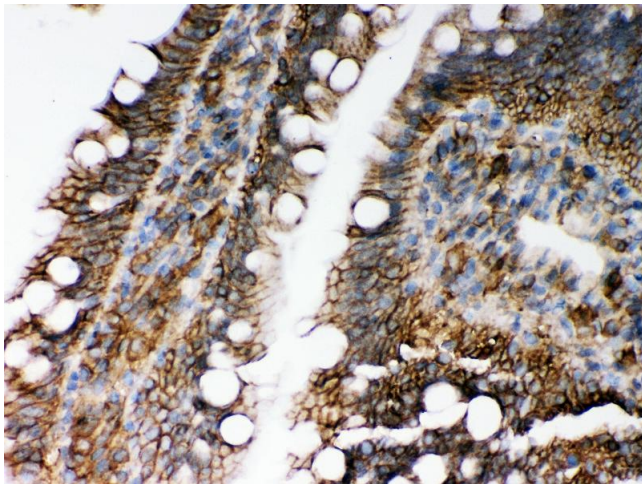
Storage: 4 °C/-20 °C

Storage Comment: At -20°C for one year. After reconstitution, at 4°C for one month.  
It can also be aliquotted and stored frozen at -20 °C for a longer time. Avoid repeated freezing and thawing.



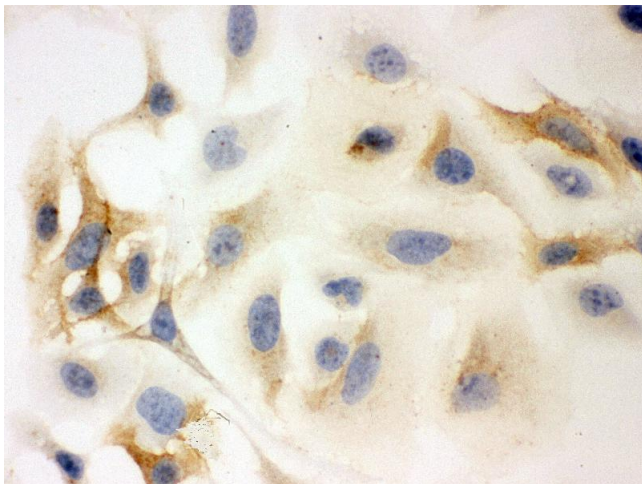
#### Immunohistochemistry

**Image 1.** Anti- HLA-C Picoband antibody,IHC(P) IHC(P): Human Lung Cancer Tissue



#### Immunohistochemistry

**Image 2.** Anti- HLA-C Picoband antibody,IHC(P) IHC(P): Rat Intestine Tissue



#### Immunohistochemistry

**Image 3.** Anti- HLA-C Picoband antibody,ICC ICC: HELA Cell

Please check the [product details page](#) for more images. Overall 5 images are available for ABIN3043843.