

Datasheet for ABIN3043863  
**anti-ITPR3 antibody (N-Term)**

## 4 Images

[Go to Product page](#)

## Overview

Quantity:	100 µg
Target:	ITPR3
Binding Specificity:	AA 70-95, N-Term
Reactivity:	Human, Mouse, Rat
Host:	Rabbit
Clonality:	Polyclonal
Application:	Western Blotting (WB), Immunohistochemistry (Paraffin-embedded Sections) (IHC (p))

## Product Details

Purpose:	Rabbit IgG polyclonal antibody for Inositol 1,4,5-trisphosphate receptor type 3(ITPR3) detection. Tested with WB, IHC-P in Human,Mouse,Rat.
Immunogen:	A synthetic peptide corresponding to a sequence at the N-terminus of human ITPR3 (70-95aa QYWKAKQTKQDKEKIADVLLQKLQH), identical to the related mouse and rat sequences.
Sequence:	QYWKAKQTKQ DKEKIADVVL LQKLQH
Isotype:	IgG
Cross-Reactivity (Details):	No cross reactivity with other proteins.
Characteristics:	Rabbit IgG polyclonal antibody for Inositol 1,4,5-trisphosphate receptor type 3(ITPR3) detection. Tested with WB, IHC-P in Human,Mouse,Rat.  Gene Name: inositol 1,4,5-trisphosphate receptor, type 3 Protein Name: Inositol 1,4,5-trisphosphate receptor type 3
Purification:	Immunogen affinity purified.

## Target Details

Target:	ITPR3
Alternative Name:	ITPR3 ( <a href="#">ITPR3 Products</a> )
Background:	<p>ITPR3 encodes a receptor for inositol 1,4,5-trisphosphate, a second messenger that mediates the release of intracellular calcium. The receptor contains a calcium channel at the C-terminus and the ligand-binding site at the N-terminus. Knockout studies in mice suggest that type 2 and type 3 inositol 1,4,5-trisphosphate receptors play a key role in exocrine secretion underlying energy metabolism and growth. ITP3 channels serve an important role in the taste transduction pathway of sweet, bitter and umami tastes the gustatory system. ITP3 channels allow the flow of Calcium out of the endoplasmic reticulum in response to IP3. Calcium cations result in the activation of TRPM5 which leads to a depolarisation generating potential and an action potential.</p> <p>Synonyms: 4 antibody 5-trisphosphate receptor antibody 5-trisphosphate receptor type 3 antibody  FLJ36205 antibody Inositol 1 antibody Inositol 1,4,5 trisphosphate receptor type 3 antibody InsP3R3 antibody IP3 receptor antibody IP3 receptor isoform 3 antibody IP3R 3 antibody IP3R antibody IP3R3 antibody ITPR 3 antibody ITPR3 antibody ITPR3_HUMAN antibody  Type 3 inositol 1 antibody Type 3 inositol 1,4,5 trisphosphate receptor antibody Type 3 InsP3 receptor antibody</p>
Gene ID:	3710
UniProt:	<a href="#">Q14573</a>
Pathways:	<a href="#">Fc-epsilon Receptor Signaling Pathway</a> , <a href="#">EGFR Signaling Pathway</a> , <a href="#">Neurotrophin Signaling Pathway</a> , <a href="#">Thyroid Hormone Synthesis</a> , <a href="#">Myometrial Relaxation and Contraction</a> , <a href="#">G-protein mediated Events</a> , <a href="#">Interaction of EGFR with phospholipase C-gamma</a> , <a href="#">BCR Signaling</a>

## Application Details

Application Notes:	<p>WB: Concentration: 0.1-0.5 µg/mL, Tested Species: Human, The detection limit for ITPR3 is approximately 0.1 ng/lane under reducing conditions.</p> <p>IHC-P: Concentration: 0.5-1 µg/mL, Tested Species: Human, Mouse, Rat, Epitope Retrieval by Heat: Boiling the paraffin sections in 10 mM citrate buffer, pH 6.0, for 20 mins is required for the staining of formalin/paraffin sections.</p> <p>Notes: Tested Species: Species with positive results. Other applications have not been tested. Optimal dilutions should be determined by end users.</p>
Comment:	Antibody can be supported by chemiluminescence kit ABIN921124 in WB, supported by

## Application Details

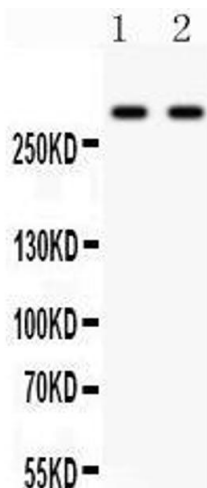
ABIN921231 in IHC(P).

Restrictions: For Research Use only

## Handling

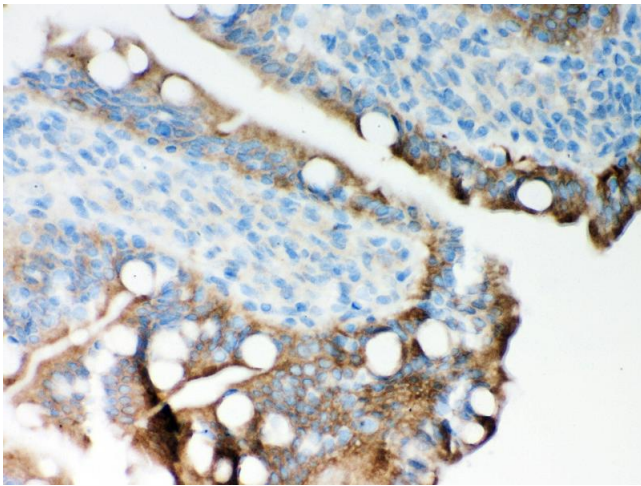
Format:	Lyophilized
Reconstitution:	Add 0.2 mL of distilled water will yield a concentration of 500 µg/mL.
Concentration:	500 µg/mL
Buffer:	Each vial contains 5 mg BSA, 0.9 mg NaCl, 0.2 mg Na2HPO4, 0.05 mg Sodium azide.
Preservative:	Sodium azide
Precaution of Use:	This product contains Sodium azide: a POISONOUS AND HAZARDOUS SUBSTANCE which should be handled by trained staff only.
Handling Advice:	Avoid repeated freezing and thawing.
Storage:	4 °C/-20 °C
Storage Comment:	At -20°C for one year. After reconstitution, at 4°C for one month. It can also be aliquotted and stored frozen at -20 °C for a longer time. Avoid repeated freezing and thawing.

## Validation report #300031 for Immunohistochemistry (IHC)



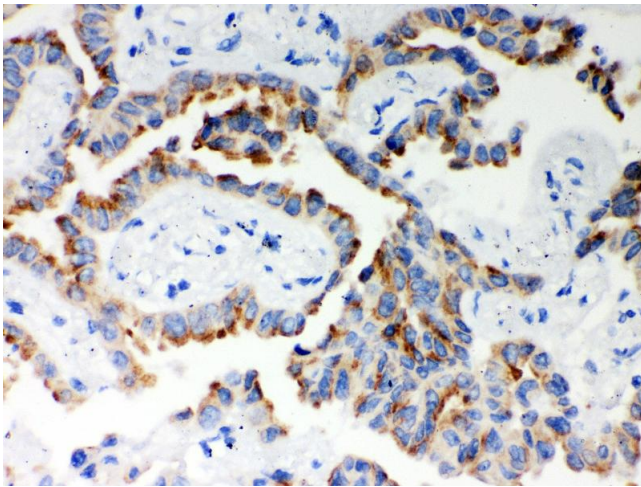
### Western Blotting

**Image 1.** Anti- ITPR3 Picoband antibody, Western blotting  
All lanes: Anti ITPR3 at 0.5ug/ml Lane 1: HELA Whole Cell Lysate at 40ug Lane 2: SW620 Whole Cell Lysate at 40ug  
Predicted bind size: 304KD Observed bind size: 304KD



#### Immunohistochemistry

**Image 2.** Anti- ITPR3 Picoband antibody, IHC(P) IHC(P): Rat Intestine Tissue



#### Immunohistochemistry

**Image 3.** Anti- ITPR3 Picoband antibody, IHC(P) IHC(P): Human Lung Cancer Tissue

Please check the [product details page](#) for more images. Overall 4 images are available for ABIN3043863.