

Datasheet for ABIN3043876

**anti-MCL-1 antibody (AA 1-350)**

5 Images

1 Publication

[Go to Product page](#)

## Overview

|                      |  |
|----------------------|--|
| Quantity:            | 100 µg   |
| Target:              | MCL-1 (MCL1)   |
| Binding Specificity: | AA 1-350   |
| Reactivity:          | Human, Mouse, Rat  |
| Host:                | Rabbit   |
| Clonality:           | Polyclonal   |
| Conjugate:           | This MCL-1 antibody is un-conjugated   |
| Application:         | Western Blotting (WB), Immunohistochemistry (Paraffin-embedded Sections) (IHC (p)) |

## Product Details

|                             |   |
|-----------------------------|---|
| Purpose:                    | Rabbit IgG polyclonal antibody for Induced myeloid leukemia cell differentiation protein Mcl-1(MCL1) detection. Tested with WB, IHC-P in Human,Mouse,Rat.   |
| Immunogen:                  | E.coli-derived human MCL1 recombinant protein (Position: M1-R350). Human MCL1 shares 82% and 78% amino acid (aa) sequences identity with mouse and rat MCL1, respectively.  |
| Isotype:                    | IgG   |
| Cross-Reactivity (Details): | No cross reactivity with other proteins.  |
| Characteristics:            | <p>Rabbit IgG polyclonal antibody for Induced myeloid leukemia cell differentiation protein Mcl-1(MCL1) detection. Tested with WB, IHC-P in Human,Mouse,Rat.</p> <p>Gene Name: myeloid cell leukemia 1</p> <p>Protein Name: Induced myeloid leukemia cell differentiation protein Mcl-1</p> |
| Purification:               | Immunogen affinity purified.  |

## Target Details

|                   |   |
|-------------------|---|
| Target:           | MCL-1 (MCL1)  |
| Alternative Name: | MCL1 ( <a href="#">MCL1 Products</a> )  |
| Background:       | <p>MCL1, also known as myeloid cell leukemia 1, is a protein that in humans is encoded the MCL1 gene. It is mapped to 1q21.3. MCL1 is a potent multidomain antiapoptotic protein of the BCL2 family that heterodimerizes with other BCL2 family members to protect against apoptotic cell death. MCL1 as an attractive candidate for regulation of hematopoietic stem cell homeostasis that is highly expressed in hematopoietic stem cells and regulated by growth factor signals. MCL1 is a critical and specific regulator essential for ensuring the homeostasis of early hematopoietic progenitors. During mitotic arrest, MCL1 protein levels decline markedly, through a posttranslational mechanism, potentiating cell death. Phosphorylation of MCL1 directs its interaction with the tumor suppressor protein FBW7, which is the substrate-binding component of a ubiquitin ligase complex.</p> <p>Synonyms: Bcl 2 related protein EAT/mcl1 antibody Bcl-2-like protein 3 antibody Bcl-2-related protein EAT/mcl1 antibody BCL2 related antibody Bcl2-L-3 antibody BCL2L3 antibody EAT antibody Induced myeloid leukemia cell differentiation protein Mcl 1 antibody Induced myeloid leukemia cell differentiation protein Mcl-1 antibody MCL 1 antibody MCL1 antibody MCL1-ES antibody Mcl1/EAT antibody MCL1_HUMAN antibody MCL1L antibody MCL1S antibody MGC104264 antibody MGC1839 antibody Myeloid Cell Leukemia 1 antibody Myeloid cell leukemia ES antibody myeloid cell leukemia sequence 1 antibody Myeloid cell leukemia sequence 1 BCL2 related antibody Myeloid cell leukemia sequence 1 isoform 1 antibody OTTHUMP00000032794 antibody OTTHUMP00000032795 antibody TM antibody</p> |
| Gene ID:          | 4170  |
| UniProt:          | <a href="#">Q07820</a>  |
| Pathways:         | <a href="#">MAPK Signaling</a>  |

## Application Details

|                    |   |
|--------------------|---|
| Application Notes: | <p>WB: Concentration: 0.1-0.5 µg/mL, Tested Species: Human, Rat, The detection limit for MCL1 is approximately 0.25 ng/lane under reducing conditions.</p> <p>IHC-P: Concentration: 0.5-1 µg/mL, Tested Species: Human, Mouse, Rat, Epitope Retrieval by Heat: Boiling the paraffin sections in 10 mM citrate buffer, pH 6.0, for 20 mins is required for the staining of formalin/paraffin sections.</p> <p>Notes: Tested Species: Species with positive results. Other applications have not been tested.</p> |
|--------------------|---|

## Application Details

|               |   |
|---------------|---|
|               | Optimal dilutions should be determined by end users.  |
| Comment:      | Antibody can be supported by chemiluminescence kit ABIN921124 in WB, supported by ABIN921231 in IHC(P). |
| Restrictions: | For Research Use only   |

## Handling

|                    |   |
|--------------------|---|
| Format:            | Lyophilized   |
| Reconstitution:    | Add 0.2 mL of distilled water will yield a concentration of 500 µg/mL.  |
| Concentration:     | 500 µg/mL   |
| Buffer:            | Each vial contains 5 mg BSA, 0.9 mg NaCl, 0.2 mg Na2HPO4, 0.05 mg Sodium azide.   |
| Preservative:      | Sodium azide  |
| Precaution of Use: | This product contains Sodium azide: a POISONOUS AND HAZARDOUS SUBSTANCE which should be handled by trained staff only.  |
| Handling Advice:   | Avoid repeated freezing and thawing.  |
| Storage:           | 4 °C/-20 °C   |
| Storage Comment:   | At -20°C for one year. After reconstitution, at 4°C for one month.<br>It can also be aliquotted and stored frozen at -20 °C for a longer time. Avoid repeated freezing and thawing. |

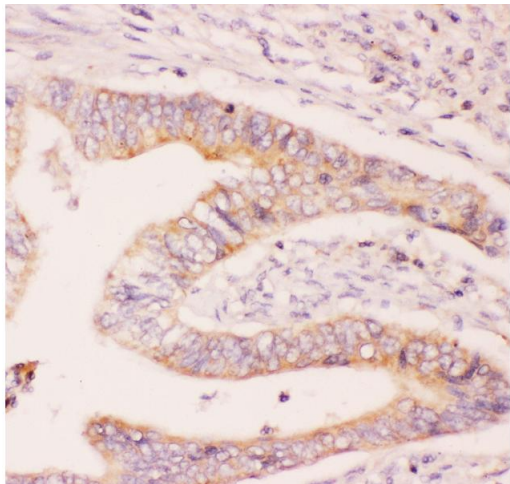
## Publications

|                   |   |
|-------------------|---|
| Product cited in: | Liu, Chen, Wang, Yang, Xue, Zhu: "Msi1 confers resistance to TRAIL by activating ERK in liver cancer cells." in: <b>FEBS letters</b> , Vol. 589, Issue 8, pp. 897-903, (2015) ( <a href="#">PubMed</a> ). |
|-------------------|---|



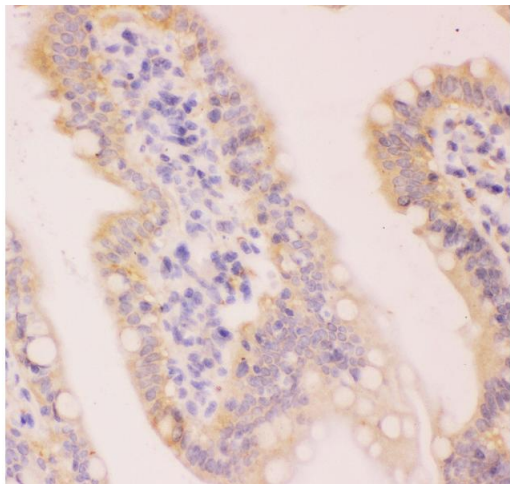
Western Blotting

**Image 1.** Anti-MCL1 Picoband antibody, All lanes: Anti MCL1 at 0.5ug/ml WB: Recombinant Human MCL1 Protein 0.5ng  
Predicted bind size: 40KD Observed bind size: 40KD



Immunohistochemistry

**Image 2.** Anti-MCL1 Picoband antibody, IHC(P): Human Intestinal Cancer Tissue



Immunohistochemistry

**Image 3.** Anti-MCL1 Picoband antibody, IHC(P): Rat Intestine Tissue

Please check the [product details page](#) for more images. Overall 5 images are available for ABIN3043876.