

Datasheet for ABIN3043909  
**anti-PKC iota antibody (AA 21-214)**



[Go to Product page](#)

5 Images

## Overview

Quantity:	100 µg
Target:	PKC iota (PRKCI)
Binding Specificity:	AA 21-214
Reactivity:	Human, Mouse, Rat
Host:	Rabbit
Clonality:	Polyclonal
Conjugate:	This PKC iota antibody is un-conjugated
Application:	Western Blotting (WB), Immunohistochemistry (Paraffin-embedded Sections) (IHC (p))

## Product Details

Purpose:	Rabbit IgG polyclonal antibody for Protein kinase C iota type(PRKCI) detection. Tested with WB, IHC-P in Human,Mouse,Rat.
Immunogen:	E.coli-derived human PKC iota recombinant protein (Position: D21-Q214). Human PKC iota shares 96% and 97% amino acid (aa) sequence identity with mouse and rat PKC iota, respectively.
Isotype:	IgG
Cross-Reactivity (Details):	No cross reactivity with other proteins.
Characteristics:	<p>Rabbit IgG polyclonal antibody for Protein kinase C iota type(PRKCI) detection. Tested with WB, IHC-P in Human,Mouse,Rat.</p> <p>Gene Name: protein kinase C, iota</p> <p>Protein Name: Protein kinase C iota type</p>

## Product Details

Purification: Immunogen affinity purified.

## Target Details

Target: PKC iota (PRKCI)

Alternative Name: PRKCI ([PRKCI Products](#))

Background: Protein kinase C iota type, also called PKCI, is an enzyme that in humans is encoded by the PRKCI gene. This gene encodes a member of the protein kinase C (PKC) family of serine/threonine protein kinases. This protein kinase is calcium-independent and phospholipid-dependent. It is not activated by phorbol esters or diacylglycerol. This kinase can be recruited to vesicle tubular clusters (VTCs) by direct interaction with the small GTPase RAB2, where this kinase phosphorylates glyceraldehyde-3-phosphate dehydrogenase (GAPD/GAPDH) and plays a role in microtubule dynamics in the early secretory pathway. PRKCI is found to be necessary for BCL-ABL-mediated resistance to drug-induced apoptosis and therefore protects leukemia cells against drug-induced apoptosis. PRKCI is also a hedgehog target gene that forms a positive feedback loop with GLI and exists at increased levels in basal cell carcinomas.

Synonyms: aPKC lambda/iota antibody|aPKC-lambda/iota antibody|Atypical protein kinase C lambda/iota antibody|Atypical protein kinase C-lambda/iota antibody|DXS1179E antibody|KPCI\_HUMAN antibody|MGC26534 antibody|nPKC iota antibody|nPKC-iota antibody|nPKCiota antibody|PKC lambda antibody|PKCI antibody|PKCiota antibody|PKClambda antibody|PRKC I antibody|PRKC iota antibody|PRKC lambda/iota antibody|PRKC-lambda/iota antibody|PRKCI antibody|Protein kinase C iota antibody|Protein kinase C iota type antibody

Gene ID: 5584

UniProt: [P41743](#)

Pathways: [Neurotrophin Signaling Pathway](#), [Cell-Cell Junction Organization](#), [Tube Formation](#)

## Application Details

Application Notes: WB: Concentration: 0.1-0.5 µg/mL, Tested Species: Human, Mouse, Rat, The detection limit for PKC iota is approximately 0.25 ng/lane under reducing conditions.  
IHC-P: Concentration: 0.5-1 µg/mL, Tested Species: Human, Mouse, Rat, Epitope Retrieval by Heat: Boiling the paraffin sections in 10 mM citrate buffer, pH 6.0, for 20 mins is required for the staining of formalin/paraffin sections.  
Notes: Tested Species: Species with positive results. Other applications have not been tested.

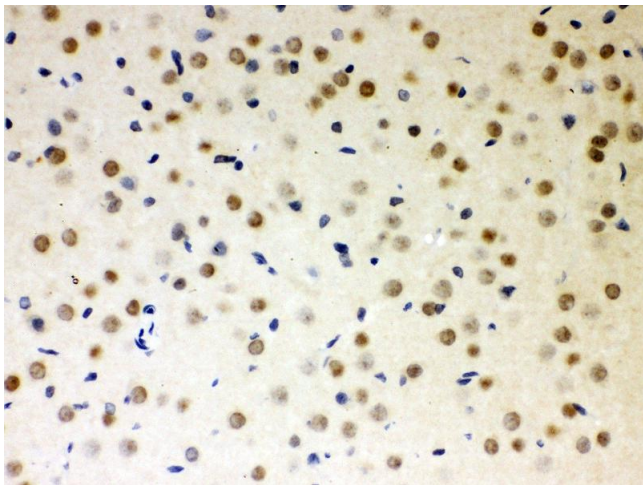
## Application Details

	Optimal dilutions should be determined by end users.
Comment:	Antibody can be supported by chemiluminescence kit ABIN921124 in WB, supported by ABIN921231 in IHC(P).
Restrictions:	For Research Use only

## Handling

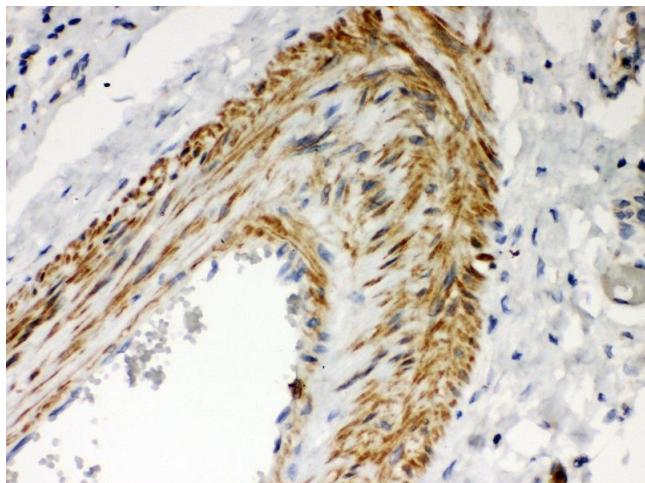
Format:	Lyophilized
Reconstitution:	Add 0.2 mL of distilled water will yield a concentration of 500 µg/mL.
Concentration:	500 µg/mL
Buffer:	Each vial contains 5 mg BSA, 0.9 mg NaCl, 0.2 mg Na2HPO4, 0.05 mg Sodium azide.
Preservative:	Sodium azide
Precaution of Use:	This product contains Sodium azide: a POISONOUS AND HAZARDOUS SUBSTANCE which should be handled by trained staff only.
Handling Advice:	Avoid repeated freezing and thawing.
Storage:	4 °C/-20 °C
Storage Comment:	At -20°C for one year. After reconstitution, at 4°C for one month. It can also be aliquotted and stored frozen at -20 °C for a longer time. Avoid repeated freezing and thawing.

## Images



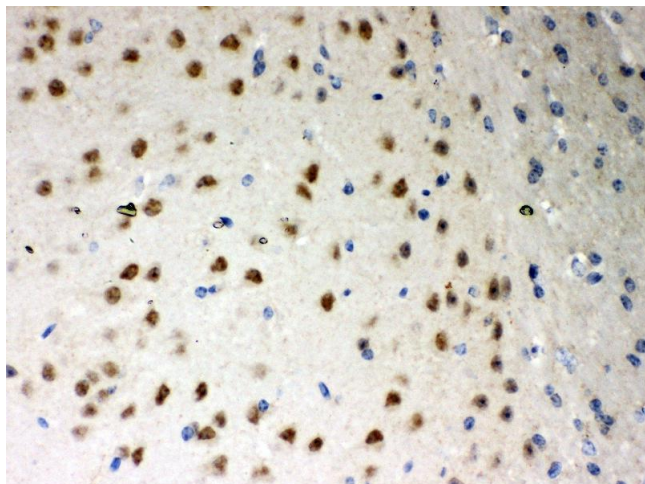
### Immunohistochemistry

**Image 1.** Anti- PKC iota Picoband antibody,IHC(P) IHC(P):  
Rat Brain Tissue



#### Immunohistochemistry

**Image 2.** Anti- PKC iota Picoband antibody,IHC(P) IHC(P):  
Human Lung Cancer Tissue



#### Immunohistochemistry (Paraffin-embedded Sections)

**Image 3.**

Please check the [product details page](#) for more images. Overall 5 images are available for ABIN3043909.