

Datasheet for ABIN3043922
anti-SFTP A2 antibody (C-Term)



[Go to Product page](#)

6 Images

Overview

Quantity:	100 µg
Target:	SFTP A2
Binding Specificity:	AA 206-237, C-Term
Reactivity:	Human, Rat, Mouse
Host:	Rabbit
Clonality:	Polyclonal
Conjugate:	This SFTP A2 antibody is un-conjugated
Application:	Western Blotting (WB), Immunohistochemistry (IHC), Immunofluorescence (IF), Immunohistochemistry (Frozen Sections) (IHC (fro))

Product Details

Purpose:	Anti-SFTP A1/2 Antibody Picoband®
Immunogen:	A synthetic peptide corresponding to a sequence at the C-terminus of human SFTP A1/2, different from the related mouse sequence by four amino acids, and from the related rat sequence by five amino acids.
Sequence:	VNYTNWYRGE PAGRGKEQCV EMYTDGQWND RN
Isotype:	IgG
Cross-Reactivity (Details):	No cross-reactivity with other proteins.
Characteristics:	Anti-SFTP A1/2 Antibody Picoband® (ABIN3043922). Tested in IF, IHC, IHC-F, WB applications. This antibody reacts with Human, Mouse, Rat. The brand Picoband indicates this is a premium antibody that guarantees superior quality, high affinity, and strong signals with minimal

Product Details

background in Western blot applications. Only our best-performing antibodies are designated as Picoband, ensuring unmatched performance.

Purification: Immunogen affinity purified.

Target Details

Target: SFTPA2

Alternative Name: SFTPA2 ([SFTPA2 Products](#))

Background: Synonyms: Pulmonary surfactant-associated protein A2,PSP-A,PSPA,SP-A,SP-A2,35 kDa pulmonary surfactant-associated protein,Alveolar proteinosis protein,Collectin-5,SFTPA2,COLEC5, PSAP, SFTP1, SFTPA, SFTPA2B,
Tissue Specificity: Expressed in B-cell lines and T-lymphocytes. .
Background: SFTPA1/2 is also known as SP-A. SFTPA1 encodes a lung surfactant protein that is a member of a subfamily of C-type lectins called collectins. The encoded protein binds specific carbohydrate moieties found on lipids and on the surface of microorganisms. This protein plays an essential role in surfactant homeostasis and in the defense against respiratory pathogens. Mutations in this gene are associated with idiopathic pulmonary fibrosis. Alternate splicing results in multiple transcript variants. SFTPA2 is one of several genes encoding pulmonary-surfactant associated proteins (SFTPA) located on chromosome 10. Mutations in this gene and a highly similar gene located nearby, which affect the highly conserved carbohydrate recognition domain, are associated with idiopathic pulmonary fibrosis. The current version of the assembly displays only a single centromeric SFTPA gene pair rather than the two gene pairs shown in the previous assembly which were thought to have resulted from a duplication.
Sequence Similarities: Belongs to the SFTPA family.

Molecular Weight: 26 kDa

Gene ID: 653509, 729238

Application Details

Application Notes: Western blot, 0.1-0.5 µg/mL, Human, Mouse, Rat
Immunohistochemistry (Paraffin-embedded Section), 0.5-1 µg/mL, Human, Mouse, Rat
Immunohistochemistry (Frozen Section), 0.5-1 µg/mL, Mouse, Rat, -
Immunofluorescence, 5 µg/mL, Rat
1. Perez-Gil J, Weaver TE (June 2010). "Pulmonary surfactant pathophysiology: current models

Application Details

and open questions". Physiology (Bethesda) 25 (3): 132-41. 2. Phelps DS (2001). "Surfactant regulation of host defense function in the lung: a question of balance". Pediatr Pathol Mol Med 20 (4): 269-92.

Comment: Antibody can be supported by chemiluminescence kit ABIN921124 in WB, supported by ABIN921231 in IHC(P) and ICC.

Restrictions: For Research Use only

Handling

Format: Lyophilized

Reconstitution: Add 0.2 mL of distilled water will yield a concentration of 500 µg/mL.

Concentration: 500 µg/mL

Buffer: Each vial contains 5 mg BSA, 0.9 mg NaCl, 0.2 mg Na₂HPO₄, 0.05 mg Sodium azide.

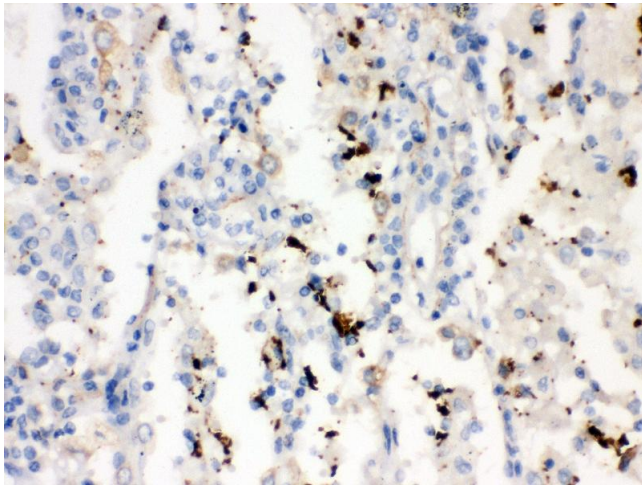
Preservative: Sodium azide

Precaution of Use: This product contains Sodium azide: a POISONOUS AND HAZARDOUS SUBSTANCE which should be handled by trained staff only.

Handling Advice: Avoid repeated freezing and thawing.

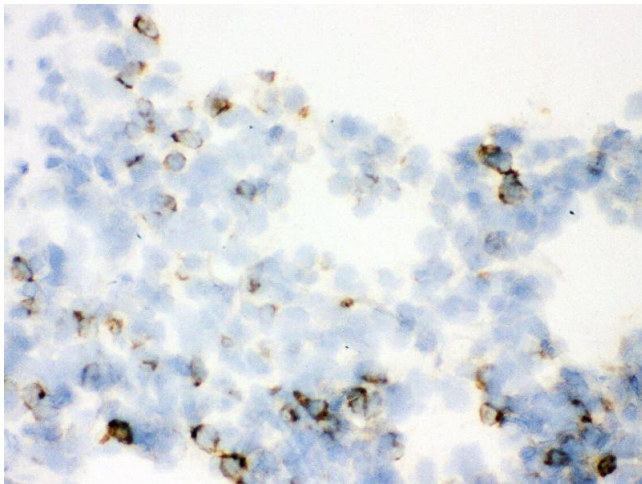
Storage: 4 °C, -20 °C

Storage Comment: Store at -20°C for one year from date of receipt. After reconstitution, at 4°C for one month. It can also be aliquotted and stored frozen at -20°C for six months. Avoid repeated freeze-thaw cycles.



Immunohistochemistry

Image 1. Anti- SFTP A1/2 Picoband antibody, IHC(P) IHC(P):
Human Lung Cancer Tissue



Immunohistochemistry

Image 2. Anti- SFTP A1/2 Picoband antibody, IHC(F) IHC(F):
Rat Lung Tissue



Western Blotting

Image 3. Anti- SFTP A1/2 Picoband antibody, Western blotting All lanes: Anti SFTP at 0.5ug/ml Lane 1: Rat Lung Tissue Lysate at 50ug Lane 2: Mouse Lung Tissue Lysate at 50ug Lane 3: A549 Whole Cell Lysate at 40ug Predicted bind size: 26KD Observed bind size: 26KD

Please check the [product details page](#) for more images. Overall 6 images are available for ABIN3043922.