

Datasheet for ABIN3043923
anti-SHC1 antibody (C-Term)

6 Images

[Go to Product page](#)

Overview

Quantity:	100 µg
Target:	SHC1
Binding Specificity:	AA 536-564, C-Term
Reactivity:	Human, Mouse, Rat
Host:	Rabbit
Clonality:	Polyclonal
Application:	Western Blotting (WB), Immunohistochemistry (Paraffin-embedded Sections) (IHC (p)), Immunohistochemistry (Frozen Sections) (IHC (fro))

Product Details

Purpose:	Rabbit IgG polyclonal antibody for SHC-transforming protein 1(SHC1) detection. Tested with WB, IHC-P, IHC-F in Human,Mouse,Rat.
Immunogen:	A synthetic peptide corresponding to a sequence at the C-terminus of human SHC (536-564aa VDPEGVVRTKDHRFESVSHLISYHMDNHL), identical to the related mouse and rat sequences.
Sequence:	VDPEGVVRTK DHRFESVSHL ISYHMDNHL
Isotype:	IgG
Cross-Reactivity (Details):	No cross reactivity with other proteins.
Characteristics:	Rabbit IgG polyclonal antibody for SHC-transforming protein 1(SHC1) detection. Tested with WB, IHC-P, IHC-F in Human,Mouse,Rat. Gene Name: SHC (Src homology 2 domain containing) transforming protein 1 Protein Name: SHC-transforming protein 1

Product Details

Purification: Immunogen affinity purified.

Target Details

Target: SHC1

Alternative Name: SHC1 ([SHC1 Products](#))

Background: SHC, also known as SHC1 (SHC-transforming protein 1) or SHCA, is a protein that in humans is encoded by the SHC1 gene. SCOP classifies the 3D structure as belonging to the SH2 domain family. This gene encodes three main isoforms that differ in activities and subcellular location. While all three are adapter proteins in signal transduction pathways, the longest (p66Shc) may be involved in regulating life span and the effects of reactive oxygen species. The other two isoforms, p52Shc and p46Shc, link activated receptor tyrosine kinases to the Ras pathway by recruitment of the GRB2/SOS complex. p66Shc is not involved in Ras activation. Unlike the other two isoforms, p46Shc is targeted to the mitochondrial matrix. Several transcript variants encoding different isoforms have been found for this gene.

Synonyms: FLJ26504 antibody|MGC98812 antibody|p46 antibody|p52 antibody|p52 SHC antibody|p52SHC antibody|p66 antibody|p66 SHC antibody|p66SHC antibody|SH2 domain protein C1 antibody|SHC (Src homology 2 domain containing) transforming protein 1 antibody|SHC 1 antibody|SHC A antibody|Shc antibody|SHC transforming protein 1 antibody|SHC transforming protein antibody|SHC-transforming protein 1 antibody|SHC-transforming protein 3 antibody|SHC-transforming protein A antibody|SHC1 antibody|SHC1_HUMAN antibody|SHCA antibody|Src homology 2 domain containing transforming protein C1 antibody|Src homology 2 domain-containing-transforming protein C1 antibody

Gene ID: 6464

UniProt: [P29353](#)

Pathways: [RTK Signaling](#), [TCR Signaling](#), [Fc-epsilon Receptor Signaling Pathway](#), [EGFR Signaling Pathway](#), [Neurotrophin Signaling Pathway](#), [ER-Nucleus Signaling](#), [Signaling Events mediated by VEGFR1 and VEGFR2](#)

Application Details

Application Notes: WB: Concentration: 0.1-0.5 µg/mL, Tested Species: Human, Mouse, Rat , The detection limit for SHC is approximately 0.1 ng/lane under reducing conditions.

Application Details

IHC-P: Concentration: 0.5-1 µg/mL, Tested Species: Human, Mouse, Rat, Epitope Retrieval by Heat: Boiling the paraffin sections in 10 mM citrate buffer, pH 6.0, for 20 mins is required for the staining of formalin/paraffin sections.

IHC-F: Concentration: 0.5-1 µg/mL, Tested Species: Human

Notes: Tested Species: Species with positive results. Other applications have not been tested.

Optimal dilutions should be determined by end users.

Comment: Antibody can be supported by chemiluminescence kit ABIN921124 in WB, supported by ABIN921231 in IHC(P) and IHC(F).

Restrictions: For Research Use only

Handling

Format: Lyophilized

Reconstitution: Add 0.2 mL of distilled water will yield a concentration of 500 µg/mL.

Concentration: 500 µg/mL

Buffer: Each vial contains 5 mg BSA, 0.9 mg NaCl, 0.2 mg Na₂HPO₄, 0.05 mg Sodium azide.

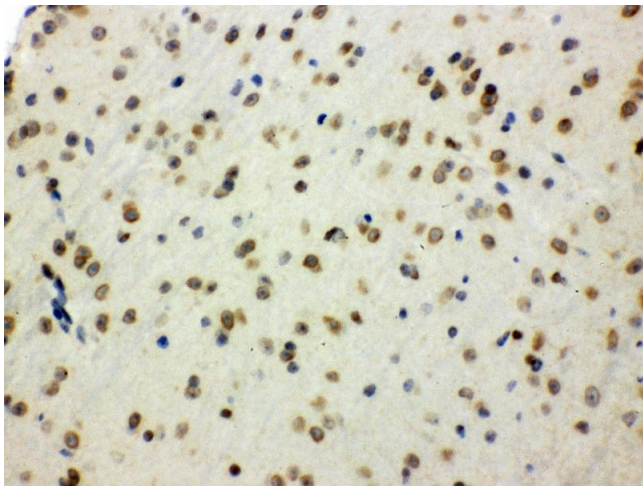
Preservative: Sodium azide

Precaution of Use: This product contains Sodium azide: a POISONOUS AND HAZARDOUS SUBSTANCE which should be handled by trained staff only.

Handling Advice: Avoid repeated freezing and thawing.

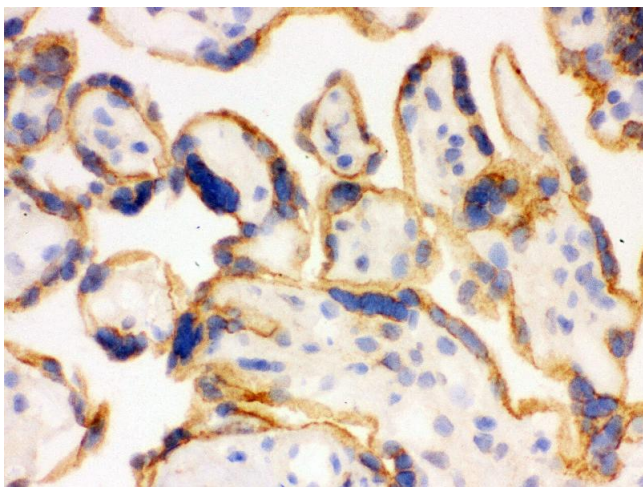
Storage: 4 °C/-20 °C

Storage Comment: At -20°C for one year. After reconstitution, at 4°C for one month.
It can also be aliquotted and stored frozen at -20 °C for a longer time. Avoid repeated freezing and thawing.



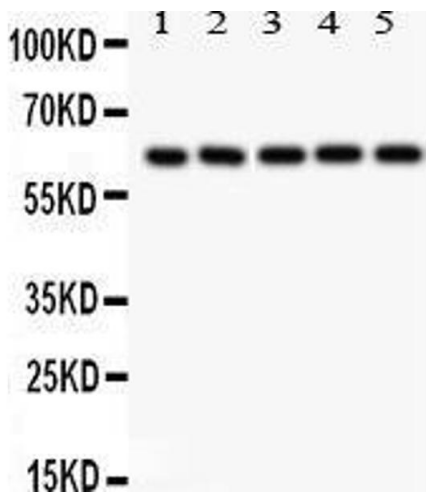
Immunohistochemistry

Image 1. Anti- SHC1 Picoband antibody, IHC(P) IHC(P):
Mouse Brain Tissue



Immunohistochemistry

Image 2. Anti- SHC1 Picoband antibody, IHC(F) IHC(F):
Human Placenta Tissue



Western Blotting

Image 3.

Please check the [product details page](#) for more images. Overall 6 images are available for ABIN3043923.