

Datasheet for ABIN3043925  
**anti-SLC12A1 antibody (N-Term)**[Go to Product page](#)

## 4 Images

## Overview

Quantity:	100 µg
Target:	SLC12A1
Binding Specificity:	AA 52-83, N-Term
Reactivity:	Rat, Human, Mouse
Host:	Rabbit
Clonality:	Polyclonal
Application:	Western Blotting (WB), Immunohistochemistry (Paraffin-embedded Sections) (IHC (p))

## Product Details

Purpose:	Rabbit IgG polyclonal antibody for Solute carrier family 12 member 1(SLC12A1) detection. Tested with WB, IHC-P in Human,Mouse,Rat.
Immunogen:	A synthetic peptide corresponding to a sequence at the N-terminus of human SLC12A1(52-83aa DEAQKRLRISFRPGNQECYDNFLQSGETAKTD), different from the related mouse sequence by two amino acids, and from the related rat sequence by four amino acids.
Sequence:	DEAQKRLRIS FRPGNQECYD NFLQSGETAK TD
Isotype:	IgG
Cross-Reactivity (Details):	No cross reactivity with other proteins.
Characteristics:	Rabbit IgG polyclonal antibody for Solute carrier family 12 member 1(SLC12A1) detection. Tested with WB, IHC-P in Human,Mouse,Rat. Gene Name: solute carrier family 12 (sodium/potassium/chloride transporters), member 1 Protein Name: Solute carrier family 12 member 1

## Product Details

Purification: Immunogen affinity purified.

## Target Details

Target: SLC12A1

Alternative Name: SLC12A1 ([SLC12A1 Products](#))

Background: Solute carrier family 12 (sodium/potassium/chloride transporters), member 1, also called NKCC2 is specifically found in cells of the thick ascending limb of the loop of Henle in nephrons, the basic functional units of the kidney. This gene is mapped to 15q21.1. This gene encodes a kidney-specific sodium-potassium-chloride cotransporter that is expressed on the luminal membrane of renal epithelial cells of the thick ascending limb of Henle's loop and the macula densa. It plays a key role in concentrating urine and accounts for most of the NaCl resorption. It is sensitive to such diuretics as furosemide and bumetanide. Some Bartter-like syndromes result from defects in this gene. This gene plays a vital role in the regulation of ionic balance and cell volume.

Synonyms: BSC1 antibody|Bumetanide sensitive sodium 3 antibody|Bumetanide-sensitive sodium-(potassium)-chloride cotransporter 2 antibody|Kidney specific Na K Cl symporter antibody|Kidney-specific Na-K-Cl symporter antibody|MGC48843 antibody|Na K 2Cl cotransporter antibody|NKCC2 antibody|potassiumchloride cotransporter 2 antibody|S12A1\_HUMAN antibody|Slc12a1 antibody|sodium potassium chloride cotransporter 2 antibody|solute carrier family 12 (sodium/potassium/chloride transporters) antibody|Solute carrier family 12 member 1 antibody

Gene ID: 6557

UniProt: [Q13621](#)

## Application Details

Application Notes: WB: Concentration: 0.1-0.5 µg/mL, Tested Species: Human, Mouse , The detection limit for SLC12A1 is approximately 0.1 ng/lane under reducing conditions.

IHC-P: Concentration: 0.5-1 µg/mL, Tested Species: Human, Mouse, Rat, Epitope Retrieval by Heat: Boiling the paraffin sections in 10 mM citrate buffer, pH 6.0, for 20 mins is required for the staining of formalin/paraffin sections.

Notes: Tested Species: Species with positive results. Other applications have not been tested. Optimal dilutions should be determined by end users.

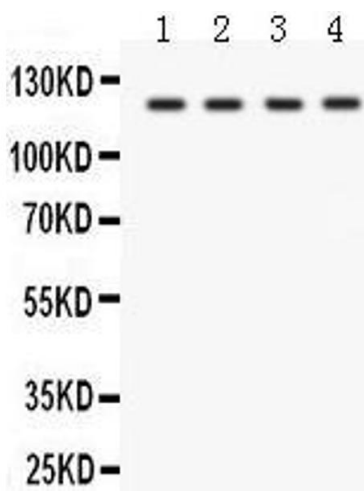
## Application Details

Comment:	Antibody can be supported by chemiluminescence kit ABIN921124 in WB, supported by ABIN921231 in IHC(P).
Restrictions:	For Research Use only

## Handling

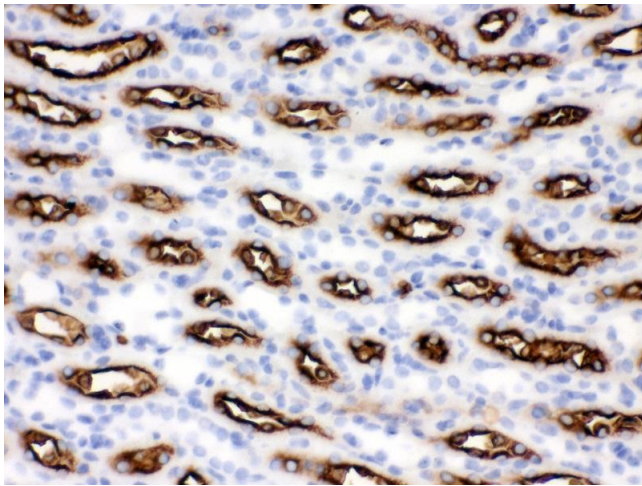
Format:	Lyophilized
Reconstitution:	Add 0.2 mL of distilled water will yield a concentration of 500 µg/mL.
Concentration:	500 µg/mL
Buffer:	Each vial contains 5 mg BSA, 0.9 mg NaCl, 0.2 mg Na <sub>2</sub> HPO <sub>4</sub> , 0.05 mg Sodium azide.
Preservative:	Sodium azide
Precaution of Use:	This product contains Sodium azide: a POISONOUS AND HAZARDOUS SUBSTANCE which should be handled by trained staff only.
Handling Advice:	Avoid repeated freezing and thawing.
Storage:	4 °C/-20 °C
Storage Comment:	At -20°C for one year. After reconstitution, at 4°C for one month. It can also be aliquotted and stored frozen at -20 °C for a longer time. Avoid repeated freezing and thawing.

## Validation report #300031 for Immunohistochemistry (IHC)



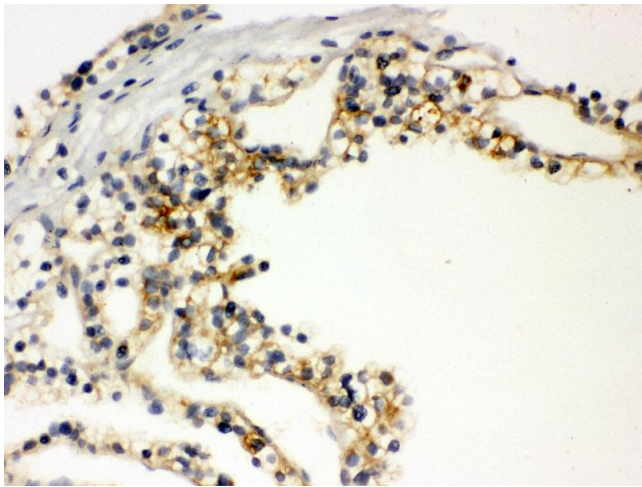
### Western Blotting

**Image 1.** Anti- SLC12A1 Picoband antibody, Western blotting All lanes: Anti SLC12A1 at 0.5ug/ml Lane 1: HELA Whole Cell Lysate at 40ug Lane 2: JURKAT Whole Cell Lysate at 40ug Lane 3: SKOV Whole Cell Lysate at 40ug Lane 4: Mouse Kidney Tissue Lysate at 50ug Predicted bind size: 121KD Observed bind size: 121KD



#### Immunohistochemistry

**Image 2.** Anti- SLC12A1 Picoband antibody, IHC(P) IHC(P):  
Mouse Kidney Tissue



#### Immunohistochemistry

**Image 3.** Anti- SLC12A1 Picoband antibody, IHC(P) IHC(P):  
Human Kidney Cancer Tissue

Please check the [product details page](#) for more images. Overall 4 images are available for ABIN3043925.