

Datasheet for ABIN3043926
anti-SLC22A2 antibody (Middle Region)

3 Images

[Go to Product page](#)

Overview

Quantity:	100 µg
Target:	SLC22A2
Binding Specificity:	AA 524-555, Middle Region
Reactivity:	Rat, Mouse
Host:	Rabbit
Clonality:	Polyclonal
Application:	Western Blotting (WB), Immunohistochemistry (Paraffin-embedded Sections) (IHC (p))

Product Details

Purpose:	Rabbit IgG polyclonal antibody for Solute carrier family 22 member 2(SLC22A2) detection. Tested with WB, IHC-P in Human,Mouse,Rat.
Immunogen:	A synthetic peptide corresponding to a sequence in the middle region of human SLC22A2 (524-555aa ETIEEAENMQRPRKNKEKMIYLQVQKLDIPLN), different from the related mouse sequence by five amino acids, and from the related rat sequence by seven amino acids.
Sequence:	ETIEEAENMQ RPRKNKEKMI YLQVQKLDIP LN
Isotype:	IgG
Cross-Reactivity (Details):	Predicted Cross Reactivity: human No cross reactivity with other proteins. Predicted Cross Reactivity: Species predicted to be fit for the product based on sequence similarities.
Characteristics:	Rabbit IgG polyclonal antibody for Solute carrier family 22 member 2(SLC22A2) detection.

Product Details

Tested with WB, IHC-P in Human, Mouse, Rat.

Gene Name: solute carrier family 22 (organic cation transporter), member 2

Protein Name: Solute carrier family 22 member 2

Purification: Immunogen affinity purified.

Target Details

Target: SLC22A2

Alternative Name: SLC22A2 ([SLC22A2 Products](#))

Background: SLC22A2 is also known as OCT2. It is mapped to 6q25.3. Polyspecific organic cation transporters in the liver, kidney, intestine, and other organs are critical for elimination of many endogenous small organic cations as well as a wide array of drugs and environmental toxins. This gene is one of three similar cation transporter genes located in a cluster on chromosome 6. The encoded protein contains twelve putative transmembrane domains and is a plasma integral membrane protein. It is found primarily in the kidney, where it may mediate the first step in cation reabsorption.

Synonyms: MGC32628 antibody|OCT 2 antibody|OCT2 antibody|Organic cation transporter 2 antibody|Organic cation transporter antibody|RP11-317M22.2 antibody|Solute carrier family 22 (organic cation transporter) member 2 antibody|Solute carrier family 22 member 2 antibody

Gene ID: 6582

UniProt: [O15244](#)

Application Details

Application Notes: WB: Concentration: 0.1-0.5 µg/mL, Tested Species: Mouse, Rat, Predicted Species: Human, The detection limit for SLC22A2 is approximately 0.1 ng/lane under reducing conditions.
Notes: Tested Species: Species with positive results. Predicted Species: Species predicted to be fit for the product based on sequence similarities. Other applications have not been tested.
Optimal dilutions should be determined by end users.

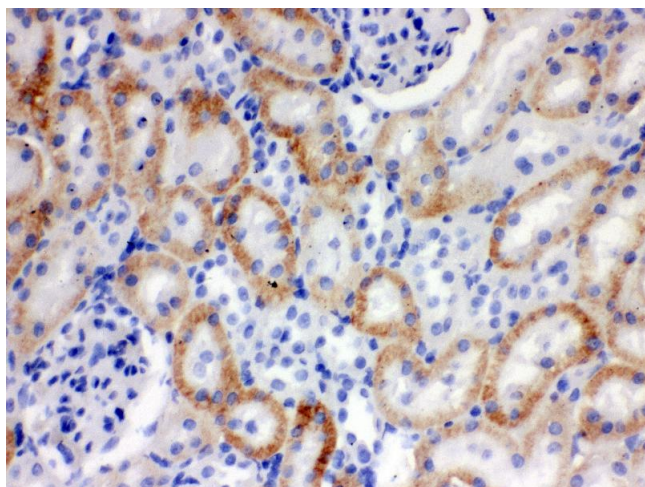
Comment: Antibody can be supported by chemiluminescence kit ABIN921124 in WB, supported by ABIN921231 in IHC(P).

Restrictions: For Research Use only

Handling

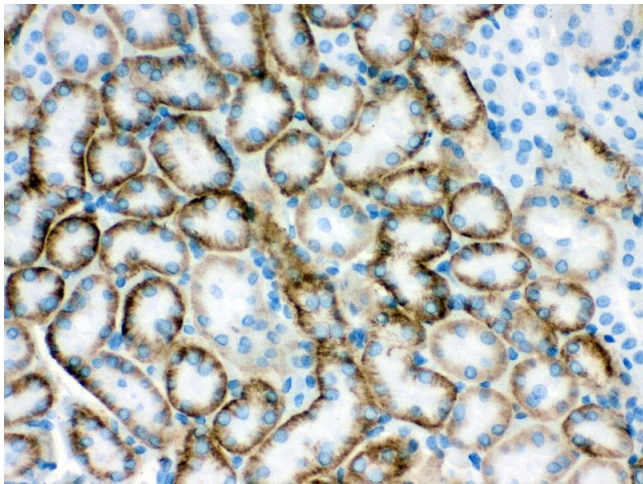
Format:	Lyophilized
Reconstitution:	Add 0.2 mL of distilled water will yield a concentration of 500 µg/mL.
Concentration:	500 µg/mL
Buffer:	Each vial contains 5 mg BSA, 0.9 mg NaCl, 0.2 mg Na ₂ HPO ₄ , 0.05 mg Sodium azide.
Preservative:	Sodium azide
Precaution of Use:	This product contains Sodium azide: a POISONOUS AND HAZARDOUS SUBSTANCE which should be handled by trained staff only.
Handling Advice:	Avoid repeated freezing and thawing.
Storage:	4 °C/-20 °C
Storage Comment:	At -20°C for one year. After reconstitution, at 4°C for one month. It can also be aliquotted and stored frozen at -20 °C for a longer time. Avoid repeated freezing and thawing.

Validation report #300031 for Immunohistochemistry (IHC)



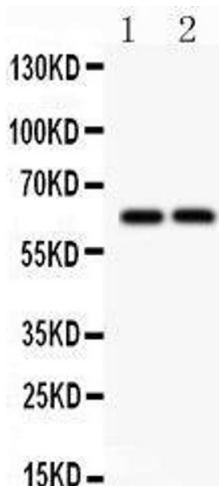
Immunohistochemistry

Image 1. Anti- SLC22A2 Picoband antibody, IHC(P) IHC(P):
Rat Kidney Tissue



Immunohistochemistry

Image 2. Anti- SLC22A2 Picoband antibody, IHC(P) IHC(P):
Mouse Kidney Tissue



Western Blotting

Image 3. Anti- SLC22A2 Picoband antibody, Western blotting All lanes: Anti SLC22A2 at 0.5ug/ml Lane 1: Rat Brain Tissue Lysate at 50ug Lane 2: Mouse Brain Tissue Lysate at 50ug Predicted bind size: 63KD Observed bind size: 63KD