

Datasheet for ABIN3043931
anti-SLC6A4 antibody (N-Term)

3 Images

[Go to Product page](#)

Overview

Quantity:	100 µg
Target:	SLC6A4
Binding Specificity:	AA 57-85, N-Term
Reactivity:	Human, Rat
Host:	Rabbit
Clonality:	Polyclonal
Application:	Western Blotting (WB), Immunohistochemistry (Paraffin-embedded Sections) (IHC (p))

Product Details

Purpose:	Rabbit IgG polyclonal antibody for Sodium-dependent serotonin transporter(SLC6A4) detection. Tested with WB, IHC-P in Human,Rat.
Immunogen:	A synthetic peptide corresponding to a sequence at the N-terminus of human SLC6A4 (57-85aa DDTRHSIPATTTTLVAELHQGERETWGKK), different from the related mouse and rat sequences by six amino acids.
Sequence:	DDTRHSIPAT TTTTLVAELHQ GERETWGKK
Isotype:	IgG
Cross-Reactivity (Details):	No cross reactivity with other proteins.
Characteristics:	Rabbit IgG polyclonal antibody for Sodium-dependent serotonin transporter(SLC6A4) detection. Tested with WB, IHC-P in Human,Rat. Gene Name: solute carrier family 6 (neurotransmitter transporter, serotonin), member 4 Protein Name: Sodium-dependent serotonin transporter

Product Details

Purification: Immunogen affinity purified.

Target Details

Target: SLC6A4

Alternative Name: SLC6A4 ([SLC6A4 Products](#))

Background: SLC6A4 (Solute carrier family 6, member 4), also known as SERT (serotonin transporter), is a monoamine transporter protein. The SLC6A4 gene spans 31 kb and contains 14 exons. This protein integral membrane protein transports the neurotransmitter serotonin from synaptic spaces into presynaptic neurons. This transport of serotonin by the SERT protein terminates the action of serotonin and recycles it in a sodium-dependent manner. This protein is the target of many antidepressant medications, including those of the SSRI class. It is a member of the sodium: neurotransmitter symporter family. A repeat length polymorphism in the promoter of this gene has been shown to affect the rate of serotonin uptake and may play a role in sudden infant death syndrome, aggressive behavior in Alzheimer disease patients, post-traumatic stress disorder and depression-susceptibility in people experiencing emotional trauma.

Synonyms: 5 HTT antibody|5 HTTLPR antibody|5 hydroxytryptamine (serotonin) transporter antibody|5 hydroxytryptamine transporter antibody|5HT transporter antibody|5HTT antibody|hSERT antibody|HTT antibody|Na⁺/Cl⁻ dependent serotonin transporter antibody|OCD1 antibody| SC6A4_HUMAN antibody|Serotonin transporter 1 antibody|SERT antibody|SERT1 antibody|SLC6A4 antibody|Sodium dependent serotonin transporter antibody|Sodium-dependent serotonin transporter antibody|Solute carrier family 6 (neurotransmitter transporter) member 4 antibody|solute carrier family 6 (neurotransmitter transporter, serotonin), member 4 antibody|Solute carrier family 6 member 4 antibody

Gene ID: 6532

UniProt: [P31645](#)

Application Details

Application Notes: WB: Concentration: 0.1-0.5 µg/mL, Tested Species: Human, The detection limit for SLC6A4 is approximately 0.1 ng/lane under reducing conditions.

IHC-P: Concentration: 0.5-1 µg/mL, Tested Species: Human, Rat, Epitope Retrieval by Heat: Boiling the paraffin sections in 10 mM citrate buffer, pH 6.0, for 20 mins is required for the staining of formalin/paraffin sections.

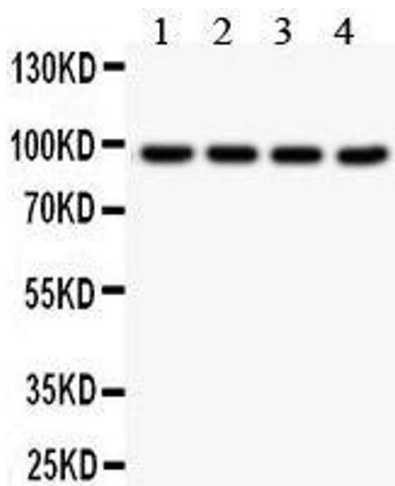
Application Details

	Notes: Tested Species: Species with positive results. Other applications have not been tested. Optimal dilutions should be determined by end users.
Comment:	Antibody can be supported by chemiluminescence kit ABIN921124 in WB, supported by ABIN921231 in IHC(P).
Restrictions:	For Research Use only

Handling

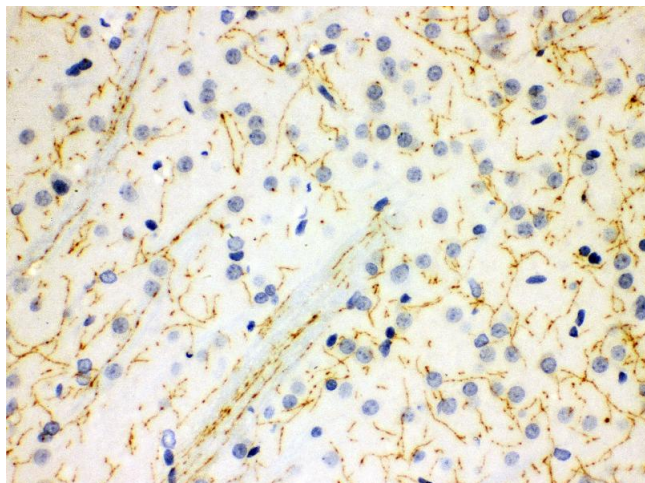
Format:	Lyophilized
Reconstitution:	Add 0.2 mL of distilled water will yield a concentration of 500 µg/mL.
Concentration:	500 µg/mL
Buffer:	Each vial contains 5 mg BSA, 0.9 mg NaCl, 0.2 mg Na2HPO4, 0.05 mg Sodium azide.
Preservative:	Sodium azide
Precaution of Use:	This product contains Sodium azide: a POISONOUS AND HAZARDOUS SUBSTANCE which should be handled by trained staff only.
Handling Advice:	Avoid repeated freezing and thawing.
Storage:	4 °C/-20 °C
Storage Comment:	At -20°C for one year. After reconstitution, at 4°C for one month. It can also be aliquotted and stored frozen at -20 °C for a longer time. Avoid repeated freezing and thawing.

Images



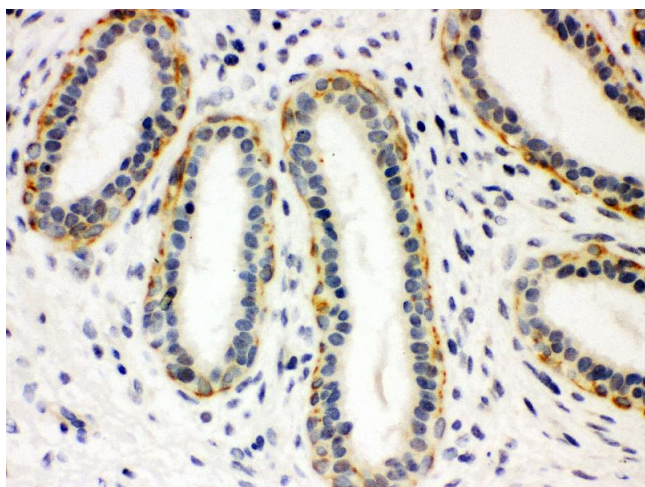
Western Blotting

Image 1. Anti- SLC6A4 Picoband antibody, Western blotting
All lanes: Anti SLC6A4 at 0.5ug/ml Lane 1: A549 Whole Cell Lysate at 40ug Lane 2: MM231 Whole Cell Lysate at 40ug Lane 3: HELA Whole Cell Lysate at 40ug Lane 4: 22RV1 Whole Cell Lysate at 40ug Predicted bind size: 70KD
Observed bind size: 95KD



Immunohistochemistry

Image 2. Anti- SLC6A4 Picoband antibody, IHC(P) IHC(P):
Rat Brain Tissue



Immunohistochemistry

Image 3. Anti- SLC6A4 Picoband antibody, IHC(P) IHC(P):
Human Mammary Cancer Tissue