

Datasheet for ABIN3043948
anti-TLR7 antibody (C-Term)[Go to Product page](#)

7 Images

1 Publication

Overview

Quantity:	100 µg
Target:	TLR7
Binding Specificity:	AA 1020-1047, C-Term
Reactivity:	Human, Mouse, Rat
Host:	Rabbit
Clonality:	Polyclonal
Application:	Western Blotting (WB), Immunohistochemistry (Paraffin-embedded Sections) (IHC (p)), Immunocytochemistry (ICC), Immunohistochemistry (Frozen Sections) (IHC (fro))

Product Details

Purpose:	Rabbit IgG polyclonal antibody for Toll-like receptor 7(TLR7) detection. Tested with WB, IHC-P, IHC-F, ICC in Human,Mouse,Rat.
Immunogen:	A synthetic peptide corresponding to a sequence at the C-terminus of human TLR7 (1020-1047aa QAHPYFWQCLKNALATDNHVAYSQVFKE), different from the related mouse sequence by two amino acids.
Sequence:	QAHPYFWQCL KNALATDNHV AYSQVFKE
Isotype:	IgG
Cross-Reactivity (Details):	No cross reactivity with other proteins.
Characteristics:	Rabbit IgG polyclonal antibody for Toll-like receptor 7(TLR7) detection. Tested with WB, IHC-P, IHC-F, ICC in Human,Mouse,Rat. Gene Name: toll-like receptor 7

Product Details

Protein Name: Toll-like receptor 7

Purification: Immunogen affinity purified.

Target Details

Target: TLR7

Alternative Name: TLR7 ([TLR7 Products](#))

Background: TLR7 (Toll-like receptor 7) is protein that in humans is encoded by the TLR7 gene. Orthologs are found in mammals and birds. TLR7 is a member of the Toll-like receptor (TLR) family which plays a fundamental role in pathogen recognition and activation of innate immunity. TLRs are highly conserved from Drosophila to humans and share structural and functional similarities. They recognize pathogen-associated molecular patterns (PAMPs) that are expressed on infectious agents, and mediate the production of cytokines necessary for the development of effective immunity. The various TLRs exhibit different patterns of expression. This gene is predominantly expressed in lung, placenta, and spleen, and lies in close proximity to another family member, TLR8, on human chromosome X. TLR7 recognises single stranded RNA in endosomes, which is a common feature of viral genomes which are internalised by macrophages.

Synonyms: PRO285 antibody|TLR 7 antibody|Tlr7 antibody|TLR7_HUMAN antibody|Toll like receptor 7 antibody|Toll-like receptor 7 antibody|UNQ248 antibody

Gene ID: 51284

Pathways: [TLR Signaling](#), [Activation of Innate immune Response](#), [Toll-Like Receptors Cascades](#)

Application Details

Application Notes: WB: Concentration: 0.1-0.5 µg/mL, Tested Species: Human, The detection limit for TLR7 is approximately 0.1 ng/lane under reducing conditions.

IHC-P: Concentration: 0.5-1 µg/mL, Tested Species: Human, Mouse, Rat, Epitope Retrieval by Heat: Boiling the paraffin sections in 10 mM citrate buffer, pH 6.0, for 20 mins is required for the staining of formalin/paraffin sections.

IHC-F: Concentration: 0.5-1 µg/mL, Tested Species: Human

ICC: Concentration: 0.5-1 µg/mL, Tested Species: Human

Notes: Tested Species: Species with positive results. Other applications have not been tested. Optimal dilutions should be determined by end users.

Application Details

Comment: Antibody can be supported by chemiluminescence kit ABIN921124 in WB, supported by ABIN921231 in IHC(P), IHC(F) and ICC.

Restrictions: For Research Use only

Handling

Format: Lyophilized

Reconstitution: Add 0.2 mL of distilled water will yield a concentration of 500 µg/mL.

Concentration: 500 µg/mL

Buffer: Each vial contains 5 mg BSA, 0.9 mg NaCl, 0.2 mg Na₂HPO₄, 0.05 mg Sodium azide.

Preservative: Sodium azide

Precaution of Use: This product contains Sodium azide: a POISONOUS AND HAZARDOUS SUBSTANCE which should be handled by trained staff only.

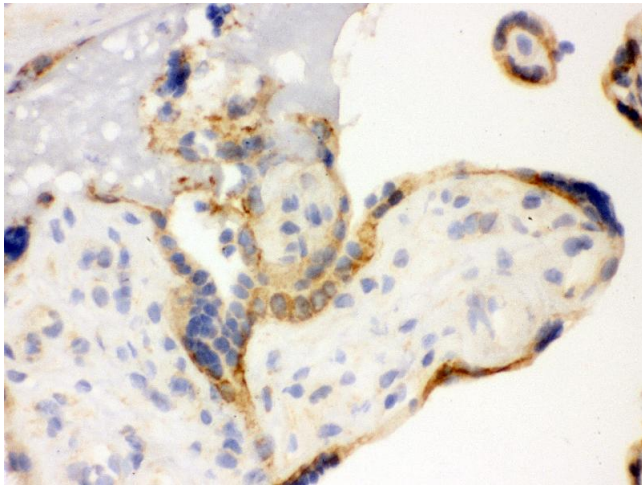
Handling Advice: Avoid repeated freezing and thawing.

Storage: 4 °C/-20 °C

Storage Comment: At -20°C for one year. After reconstitution, at 4°C for one month.
It can also be aliquotted and stored frozen at -20 °C for a longer time. Avoid repeated freezing and thawing.

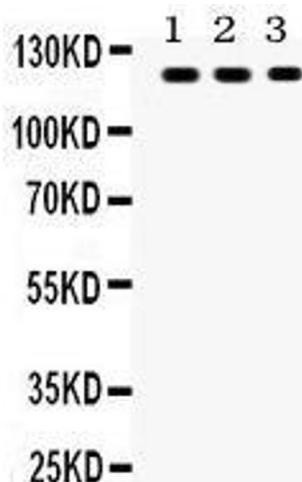
Publications

Product cited in: Xu, Tang, Li, Shi, Chen, Liang: "Positional and expressive alteration of prohibitin during the induced differentiation of human hepatocarcinoma SMMC-7721 cells." in: **World journal of gastroenterology**, Vol. 14, Issue 32, pp. 5008-14, (2008) ([PubMed](#)).



Immunohistochemistry

Image 1. Anti- TLR7 Picoband antibody, IHC(F) IHC(F):
Human Placenta Tissue



Western Blotting

Image 2. Anti- TLR7 Picoband antibody, Western blotting All
lanes: Anti TLR7 at 0.5ug/ml Lane 1: MCF-7 Whole Cell
Lysate at 40ug Lane 2: COLO320 Whole Cell Lysate at 40ug
Lane 3: JURKAT Whole Cell Lysate at 40ug Predicted bind
size: 121KD Observed bind size: 121KD



Western Blotting

Image 3. Anti- TLR7 Picoband antibody, Western blottingAll
lanes: Anti TLR7 at 0.5ug/ml Lane 1: MCF-7 Whole Cell
Lysate at 40ug Lane 2: COLO320 Whole Cell Lysate at 40ug
Lane 3: JURKAT Whole Cell Lysate at 40ugPredicted bind
size: 121KDObserved bind size: 121KD

Please check the [product details page](#) for more images. Overall 7 images are available for ABIN3043948.