



[Go to Product page](#)

Datasheet for ABIN3043953
anti-UBE2Q2 antibody (N-Term)

2 Images

Overview

Quantity:	100 µg
Target:	UBE2Q2
Binding Specificity:	AA 83-123, N-Term
Reactivity:	Human
Host:	Rabbit
Clonality:	Polyclonal
Conjugate:	This UBE2Q2 antibody is un-conjugated
Application:	Western Blotting (WB), Immunohistochemistry (Paraffin-embedded Sections) (IHC (p))

Product Details

Purpose:	Rabbit IgG polyclonal antibody for Ubiquitin-conjugating enzyme E2 Q2(UBE2Q2) detection. Tested with WB, IHC-P in Human.
Immunogen:	A synthetic peptide corresponding to a sequence at the N-terminus of human UBE2Q2 (83-123aa LERLEDTKNNLLRQQLKWLICELCSLYNLPKHLDVEMLDQ), different from the related mouse sequence by four amino acids.
Sequence:	LERLEDTKNN LLRQQLKWL ICELCSLYNL PKHLDVEMLD Q
Isotype:	IgG
Cross-Reactivity (Details):	No cross reactivity with other proteins.
Characteristics:	Rabbit IgG polyclonal antibody for Ubiquitin-conjugating enzyme E2 Q2(UBE2Q2) detection. Tested with WB, IHC-P in Human. Gene Name: ubiquitin conjugating enzyme E2Q family member 2

Product Details

Protein Name: Ubiquitin-conjugating enzyme E2 Q2

Purification: Immunogen affinity purified.

Target Details

Target: UBE2Q2

Alternative Name: UBE2Q2 ([UBE2Q2 Products](#))

Background: UBE2Q2 is identified as a putative ubiquitin-conjugating enzyme (E2) in a microarray screen for mitotic regulatory proteins. Its gene is mapped to 15q24.2. UBE2Q2 can covalently bind ubiquitin on the active site cysteine within the UBC domain. Inhibition of UBE2Q2 in HeLa cells causes an early mitotic arrest and increases cytotoxicity when the cells are treated with microtubule-inhibiting agents (MIAs). Changes in cell cycle progression and viability are not observed in the absence of MIA treatment, indicating that UBE2Q2 is involved in the response to MIAs rather than performing a more general function in mitosis. Moreover, inhibition of the UBE2Q2 protein causes cells to undergo a prolonged prophase arrest, suggesting that UBE2Q2 normally functions to antagonize an early mitotic checkpoint. Finally, inhibition of UBE2Q2 also sensitizes cells to the cytotoxic effects of MIAs through caspase-mediated apoptosis that is correlated with PARP1 cleavage.

Synonyms: LOC92912 antibody|UB2Q2_HUMAN antibody|UBE2Q2 antibody|Ubiquitin carrier protein Q2 antibody|Ubiquitin conjugating enzyme E2Q 2 antibody|Ubiquitin conjugating enzyme E2Q family member 2 antibody|Ubiquitin-conjugating enzyme E2 Q2 antibody|ubiquitin-conjugating enzyme E2Q (putative) 2 antibody|Ubiquitin-protein ligase Q2 antibody

Gene ID: 92912

Application Details

Application Notes: WB: Concentration: 0.1-0.5 µg/mL, Tested Species: Human
IHC-P: Concentration: 0.5-1 µg/mL, Tested Species: Human, Epitope Retrieval by Heat: Boiling the paraffin sections in 10 mM citrate buffer, pH 6.0, for 20 mins is required for the staining of formalin/paraffin sections.
Notes: Tested Species: Species with positive results. Other applications have not been tested. Optimal dilutions should be determined by end users.

Comment: Antibody can be supported by chemiluminescence kit ABIN921124 in WB, supported by ABIN921231 in IHC(P).

Application Details

Restrictions: For Research Use only

Handling

Format: Lyophilized

Reconstitution: Add 0.2 mL of distilled water will yield a concentration of 500 µg/mL.

Concentration: 500 µg/mL

Buffer: Each vial contains 5 mg BSA, 0.9 mg NaCl, 0.2 mg Na₂HPO₄, 0.05 mg Sodium azide.

Preservative: Sodium azide

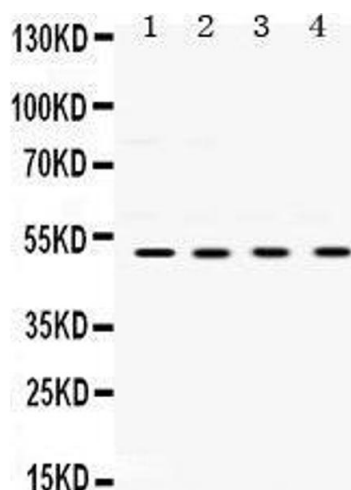
Precaution of Use: This product contains Sodium azide: a POISONOUS AND HAZARDOUS SUBSTANCE which should be handled by trained staff only.

Handling Advice: Avoid repeated freezing and thawing.

Storage: 4 °C/-20 °C

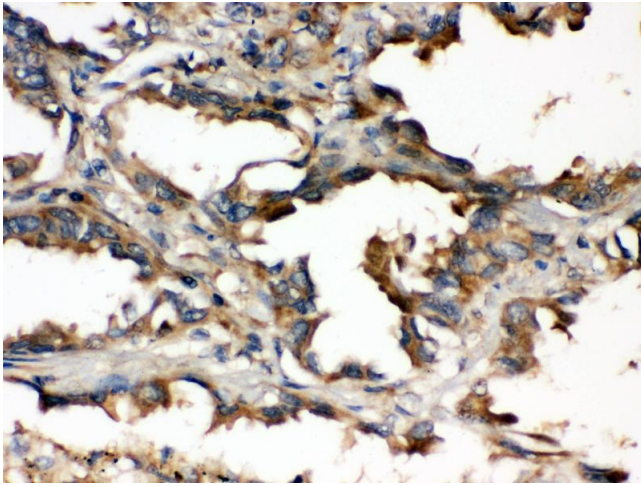
Storage Comment: At -20°C for one year. After reconstitution, at 4°C for one month.
It can also be aliquotted and stored frozen at -20 °C for a longer time. Avoid repeated freezing and thawing.

Images



Western Blotting

Image 1.



Immunohistochemistry (Paraffin-embedded Sections)

Image 2.