



[Go to Product page](#)

Datasheet for ABIN3043954
anti-ULK3 antibody (C-Term)

3 Images

Overview

Quantity:	100 µg
Target:	ULK3
Binding Specificity:	AA 427-454, C-Term
Reactivity:	Human, Mouse, Rat
Host:	Rabbit
Clonality:	Polyclonal
Application:	Western Blotting (WB), Immunohistochemistry (Paraffin-embedded Sections) (IHC (p))

Product Details

Purpose:	Rabbit IgG polyclonal antibody for Serine/threonine-protein kinase ULK3(ULK3) detection. Tested with WB, IHC-P in Human,Mouse,Rat.
Immunogen:	A synthetic peptide corresponding to a sequence at C-terminus of human ULK3 (427-454aa HTEVQNLMARAEYLKEQVKMRESRWEAD), different from the related mouse and rat sequences by four amino acids.
Sequence:	HTEVQNLMAR AEYLKEQVKM RESRWEAD
Isotype:	IgG
Cross-Reactivity (Details):	No cross reactivity with other proteins.
Characteristics:	Rabbit IgG polyclonal antibody for Serine/threonine-protein kinase ULK3(ULK3) detection. Tested with WB, IHC-P in Human,Mouse,Rat. Gene Name: unc-51 like kinase 3 Protein Name: Serine/threonine-protein kinase ULK3

Product Details

Purification: Immunogen affinity purified.

Target Details

Target: ULK3

Alternative Name: ULK3 ([ULK3 Products](#))

Background: Serine/threonine protein kinase that acts as a regulator of Sonic hedgehog (SHH) signaling and autophagy. In search of potential homologues to Drosophila and human Fu, people have cloned human serine/threonine kinase ULK3 and assessed its ability to regulate GLI transcription factors, mediators of SHH signaling. And ULK3 enhances endogenous and over-expressed GLI1 and GLI2 transcriptional activity in cultured cells, as assessed by GLI-luciferase reporter assay. Besides that, ULK3 alters subcellular localization of GLI1, as assessed by immunofluorescent staining and immunoblotting assays. It is showed that ULK3 is an autophosphorylated kinase and phosphorylates GLI proteins in vitro. Also, ULK3 catalytical activity is crucial for its function in SHH pathway. It is demonstrated that ULK3 is widely expressed and its expression is higher in a number of tissues where Shh signaling is known to be active. The data suggest that serine/threonine kinase ULK3 is involved in the SHH pathway as a positive regulator of GLI proteins.

Synonyms: DKFZP434C131 antibody|FLJ90566 antibody|Serine/threonine-protein kinase ULK3 antibody|Ulk3 antibody|ULK3_HUMAN antibody|unc 51 like kinase 3 (C. elegans) antibody|Unc-51-like kinase 3 antibody

Gene ID: 25989

Application Details

Application Notes: WB: Concentration: 0.1-0.5 µg/mL, Tested Species: Human, Mouse, Rat
IHC-P: Concentration: 0.5-1 µg/mL, Tested Species: Human, Rat, Epitope Retrieval by Heat: Boiling the paraffin sections in 10 mM citrate buffer, pH 6.0, for 20 mins is required for the staining of formalin/paraffin sections.
Notes: Tested Species: Species with positive results. Other applications have not been tested. Optimal dilutions should be determined by end users.

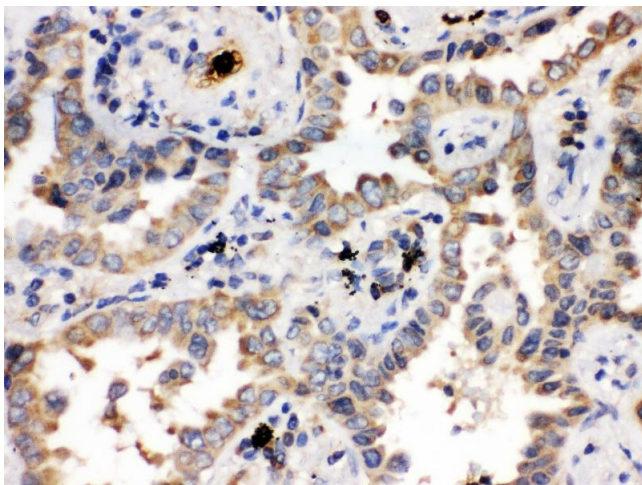
Comment: Antibody can be supported by chemiluminescence kit ABIN921124 in WB, supported by ABIN921231 in IHC(P).

Restrictions: For Research Use only

Handling

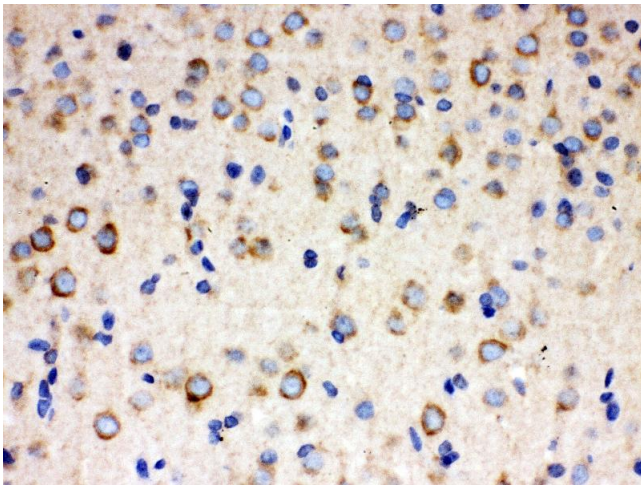
Format:	Lyophilized
Reconstitution:	Add 0.2 mL of distilled water will yield a concentration of 500 µg/mL.
Concentration:	500 µg/mL
Buffer:	Each vial contains 5 mg BSA, 0.9 mg NaCl, 0.2 mg Na ₂ HPO ₄ , 0.05 mg Sodium azide.
Preservative:	Sodium azide
Precaution of Use:	This product contains Sodium azide: a POISONOUS AND HAZARDOUS SUBSTANCE which should be handled by trained staff only.
Handling Advice:	Avoid repeated freezing and thawing.
Storage:	4 °C/-20 °C
Storage Comment:	At -20°C for one year. After reconstitution, at 4°C for one month. It can also be aliquotted and stored frozen at -20 °C for a longer time. Avoid repeated freezing and thawing.

Images



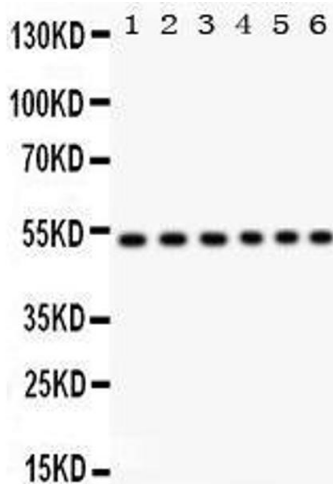
Immunohistochemistry

Image 1. Anti- ULK3 Picoband antibody, IHC(P) IHC(P):
Human Lung Cancer Tissue



Immunohistochemistry

Image 2. Anti- ULK3 Picoband antibody, IHC(P) IHC(P): Rat Brain Tissue



Western Blotting

Image 3.