



[Go to Product page](#)

Datasheet for ABIN3043973

anti-Prolactin Receptor antibody (C-Term)

4 Images

1 Publication

Overview

Quantity:	100 µg
Target:	Prolactin Receptor (PRLR)
Binding Specificity:	AA 591-605, C-Term
Reactivity:	Human, Rat
Host:	Rabbit
Clonality:	Polyclonal
Application:	Western Blotting (WB), Immunohistochemistry (Paraffin-embedded Sections) (IHC (p))

Product Details

Purpose:	Rabbit IgG polyclonal antibody for Prolactin receptor(PRLR) detection. Tested with WB, IHC-P in Human,Mouse,Rat.
Immunogen:	A synthetic peptide corresponding to a sequence at the C-terminus of mouse PRLR (591-605aa QLGRLDYLDPTCFMH), identical to the related rat sequence, and different from the related human sequence by three amino acids.
Sequence:	QLGRLDYLDP TCFMH
Isotype:	IgG
Cross-Reactivity (Details):	Predicted Cross Reactivity: mouse No cross reactivity with other proteins. Predicted Cross Reactivity: Species predicted to be fit for the product based on sequence similarities.
Characteristics:	Rabbit IgG polyclonal antibody for Prolactin receptor(PRLR) detection. Tested with WB, IHC-P in

Product Details

Human,Mouse,Rat.

Gene Name: prolactin receptor

Protein Name: Prolactin receptor

Purification: Immunogen affinity purified.

Target Details

Target: Prolactin Receptor (PRLR)

Alternative Name: PRLR ([PRLR Products](#))

Background: PRLR(Prolactin Receptor), is a cytokine receptor. By somatic cell hybrid analysis and by in situ hybridization, Arden et al.(1989, 1990) demonstrated that the prolactin receptor gene resides in the same chromosomal region as the growth hormone receptor gene, which has been mapped to 5p13-p12. Cunningham et al.(1990) demonstrated that zinc greatly increases the affinity of GH for the extracellular binding domain of PRLR, although it is not required for binding of GH to the growth hormone receptor or for binding of prolactin to the prolactin receptor. By mutational analysis, they showed that a cluster of 3 residues(histidine-18, histidine-21, and glutamic acid-174) in GH and histidine-188 in PRLR(conserved in all PRL receptors but not GH receptors) are likely zinc-ion ligands.

Synonyms: AI987712 antibody|CLONE SPM213 antibody|CPRLP antibody|Delta 4-delta 7/11 truncated prolactin receptor antibody|Delta 4-SF1b truncated prolactin receptor antibody|hPRL receptor antibody|hPRLrI antibody|Lactogen receptor antibody|MGC105486 antibody|OPR antibody|OTTHUMP00000115998 antibody|Pr-1 antibody|Pr-3 antibody|PRL R antibody|PRL-R antibody|PRLR antibody|Prlr-rs1 antibody|PRLR_HUMAN antibody|Prolactin receptor a antibody|Prolactin receptor antibody|Prolactin receptor delta 7/11 antibody|RATPRLR antibody|Secreted prolactin binding protein antibody|Truncated testis-specific box 1-C prolactin receptor antibody|wu:fj65c07 antibody

UniProt: [Q08501](#)

Pathways: [JAK-STAT Signaling](#), [Response to Growth Hormone Stimulus](#)

Application Details

Application Notes: WB: Concentration: 0.1-0.5 µg/mL, Tested Species: Human, Predicted Species: Mouse, Rat
IHC-P: Concentration: 0.5-1 µg/mL, Tested Species: Human, Rat, Predicted Species: Mouse,
Epitope Retrieval by Heat: Boiling the paraffin sections in 10 mM citrate buffer, pH 6.0, for

Application Details

20 mins is required for the staining of formalin/paraffin sections.

Notes: Tested Species: Species with positive results. Predicted Species: Species predicted to be fit for the product based on sequence similarities. Other applications have not been tested.

Optimal dilutions should be determined by end users.

Comment: Antibody can be supported by chemiluminescence kit ABIN921124 in WB, supported by ABIN921231 in IHC(P).

Restrictions: For Research Use only

Handling

Format: Lyophilized

Reconstitution: Add 0.2 mL of distilled water will yield a concentration of 500 µg/mL.

Concentration: 500 µg/mL

Buffer: Each vial contains 5 mg BSA, 0.9 mg NaCl, 0.2 mg Na₂HPO₄, 0.05 mg Thimerosal, 0.05 mg Sodium azide.

Preservative: Thimerosal (Merthiolate), Sodium azide

Precaution of Use: This product contains Sodium azide and Thimerosal (Merthiolate): POISONOUS AND HAZARDOUS SUBSTANCES which should be handled by trained staff only.

Handling Advice: Avoid repeated freezing and thawing.

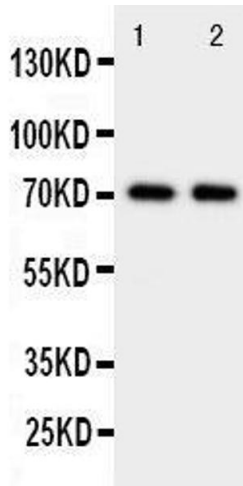
Storage: 4 °C/-20 °C

Storage Comment: At -20°C for one year. After reconstitution, at 4°C for one month.
It can also be aliquotted and stored frozen at -20 °C for a longer time. Avoid repeated freezing and thawing.

Expiry Date: 12 months

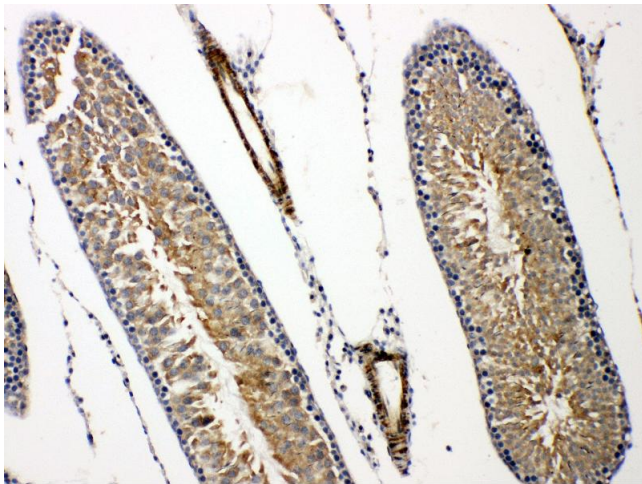
Publications

Product cited in: Whiteland, Nicholls, Shimeld, Easty, Williams, Hill: "Immunohistochemical detection of T-cell subsets and other leukocytes in paraffin-embedded rat and mouse tissues with monoclonal antibodies." in: **The journal of histochemistry and cytochemistry : official journal of the Histochemistry Society**, Vol. 43, Issue 3, pp. 313-20, (1995) ([PubMed](#)).



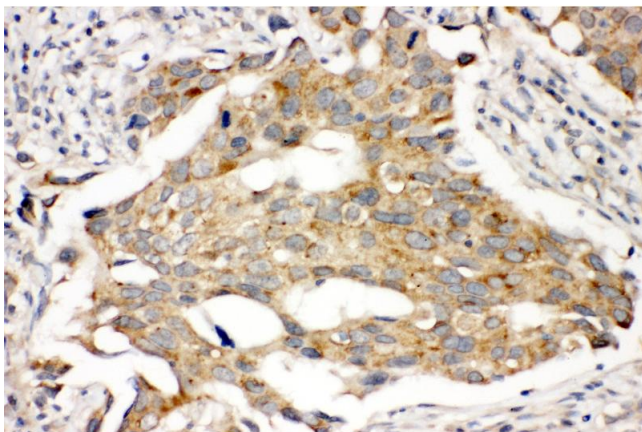
Western Blotting

Image 1. Anti-Prolactin Receptor antibody, Western blotting
Lane 1: HELA Cell Lysate Lane 2: MCF-7 Cell Lysate



Immunohistochemistry

Image 2. Anti-Prolactin Receptor antibody, IHC(P) IHC(P):
Rat Testis Tissue



Immunohistochemistry

Image 3. Anti-Prolactin Receptor antibody, IHC(P) IHC(P):
Human Mammary Cancer Tissue

Please check the [product details page](#) for more images. Overall 4 images are available for ABIN3043973.