

Datasheet for ABIN3043974
anti-WISP1 antibody (C-Term)

5 Images

[Go to Product page](#)

Overview

Quantity:	100 µg
Target:	WISP1
Binding Specificity:	AA 354-367, C-Term
Reactivity:	Human, Mouse, Rat
Host:	Rabbit
Clonality:	Polyclonal
Application:	Western Blotting (WB), Immunocytochemistry (ICC), Immunohistochemistry (Paraffin-embedded Sections) (IHC (p)), Immunohistochemistry (Frozen Sections) (IHC (fro))

Product Details

Purpose:	Rabbit IgG polyclonal antibody for WNT1-inducible-signaling pathway protein 1(WISP1) detection. Tested with WB, IHC-P, IHC-F, ICC in Human,Mouse,Rat.
Immunogen:	A synthetic peptide corresponding to a sequence at the C-terminus of human WISP1(354-367aa ADLESYPDFSEIAN), different from the related mouse and rat sequences by one amino acid.
Sequence:	ADLESYPDFS EIAN
Isotype:	IgG
Cross-Reactivity (Details):	No cross reactivity with other proteins.
Characteristics:	Rabbit IgG polyclonal antibody for WNT1-inducible-signaling pathway protein 1(WISP1) detection. Tested with WB, IHC-P, IHC-F, ICC in Human,Mouse,Rat. Gene Name: WNT1 inducible signaling pathway protein 1

Product Details

Protein Name: WNT1-inducible-signaling pathway protein 1

Purification: Immunogen affinity purified.

Target Details

Target: WISP1

Alternative Name: WISP1 ([WISP1 Products](#))

Background: WISP1(WNT1-Inducible Signaling Pathway Protein 1), also known as CCN4, is a matricellular protein that in humans is encoded by the WISP1 gene. WISP1 is induced by WNT1 and belongs to the CCN family, which includes connective tissue growth factor, cysteine-rich-61, and nephroblastoma overexpressed(Tanaka et al., 2001). By use of radiation hybrid mapping panels, Pennica et al.(1998) mapped the WISP1 to chromosome 8q24.1-q24.3, roughly 4 Mb distal to MYC. Pennica et al.(1998) found that 2 distinct systems demonstrated that WISP induction was associated with expression of WNT1. WISP1 genomic DNA was amplified in colon cancer cell lines and in human colon tumors, and its RNA was overexpressed in 84 % of tumors examined compared with patient-matched normal mucosa.

Synonyms: CCN 4 antibody|CCN family member 4 antibody|CCN4 antibody|WISP 1 antibody|WISP 1c antibody|WISP 1i antibody|WISP 1tc antibody|WISP1c antibody|WISP1i antibody|WISP1tc antibody|WNT 1 induced secreted protein 1 antibody|Wnt 1 induced secreted protein antibody|WNT 1 inducible signaling pathway protein 1 antibody|Wnt 1 signaling pathway protein 1 antibody|Wnt-1 inducible signaling pathway protein 1 antibody|WNT1 induced secreted protein 1 antibody|Wnt1 induced secreted protein antibody|WNT1 inducible signaling pathway protein 1 antibody|Wnt1 signaling pathway protein 1 antibody|WNT1-inducible-signaling pathway protein 1 antibody

UniProt: [O95388](#)

Pathways: [WNT Signaling](#), [Growth Factor Binding](#)

Application Details

Application Notes: WB: Concentration: 0.1-0.5 µg/mL, Tested Species: Human, Mouse, Rat
IHC-P: Concentration: 0.5-1 µg/mL, Tested Species: Human, Rat, Predicted Species: Mouse, Epitope Retrieval by Heat: Boiling the paraffin sections in 10 mM citrate buffer, pH 6.0, for 20 mins is required for the staining of formalin/paraffin sections.
IHC-F: Concentration: 0.5-1 µg/mL, Tested Species: Rat, Predicted Species: Human, Mouse

Application Details

ICC: Concentration: 0.5-1 µg/mL, Tested Species: Human, Predicted Species: Mouse, Rat
Notes: Tested Species: Species with positive results. Predicted Species: Species predicted to be fit for the product based on sequence similarities. Other applications have not been tested.
Optimal dilutions should be determined by end users.

Comment: Antibody can be supported by chemiluminescence kit ABIN921124 in WB, supported by ABIN921231 in IHC(P), IHC(F) and ICC.

Restrictions: For Research Use only

Handling

Format: Lyophilized

Reconstitution: Add 0.2 mL of distilled water will yield a concentration of 500 µg/mL.

Concentration: 500 µg/mL

Buffer: Each vial contains 5 mg BSA, 0.9 mg NaCl, 0.2 mg Na₂HPO₄, 0.05 mg Thimerosal, 0.05 mg Sodium azide.

Preservative: Thimerosal (Merthiolate), Sodium azide

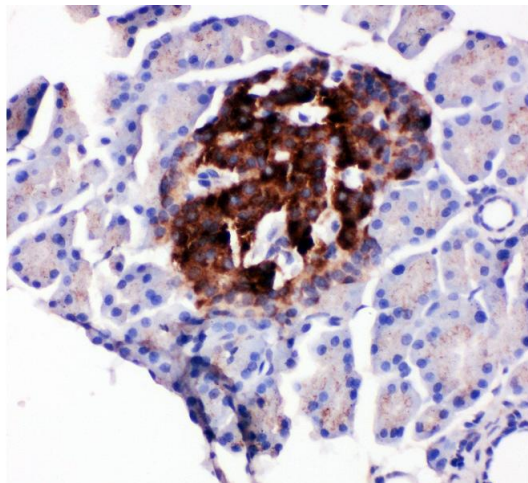
Precaution of Use: This product contains Sodium azide and Thimerosal (Merthiolate): POISONOUS AND HAZARDOUS SUBSTANCES which should be handled by trained staff only.

Handling Advice: Avoid repeated freezing and thawing.

Storage: 4 °C/-20 °C

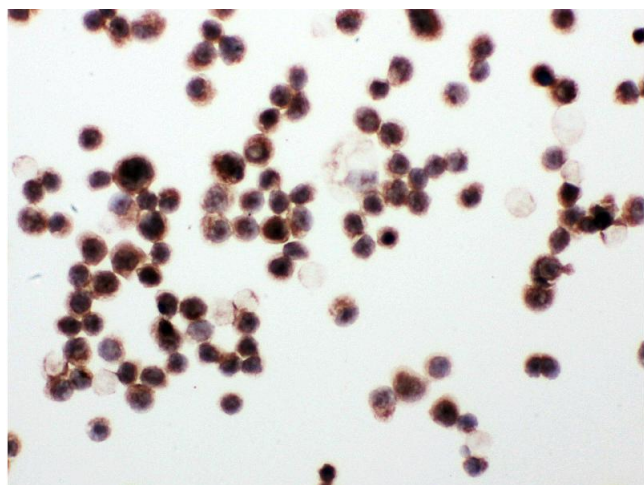
Storage Comment: At -20°C for one year. After reconstitution, at 4°C for one month.
It can also be aliquotted and stored frozen at -20 °C for a longer time. Avoid repeated freezing and thawing.

Expiry Date: 12 months



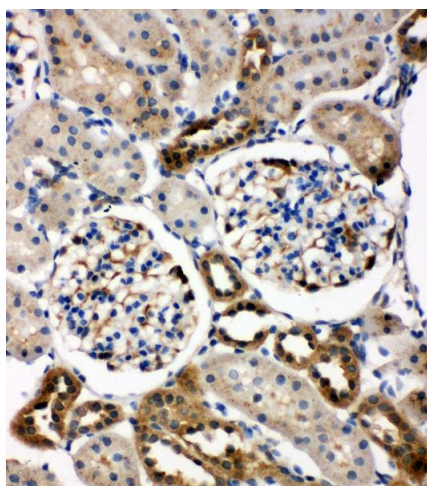
Immunohistochemistry

Image 1. Anti-WISP1 antibody, IHC(P) IHC(P): Rat Pancreas Tissue



Immunohistochemistry

Image 2. Anti-WISP1 antibody, ICC ICC: MCF-7 Cell



Immunohistochemistry

Image 3. Anti-WISP1 antibody, IHC(P) IHC(P): Rat Kidney Tissue

Please check the [product details page](#) for more images. Overall 5 images are available for ABIN3043974.