



[Go to Product page](#)

Datasheet for ABIN3043996
anti-CCR3 antibody (N-Term)

3 Images

Overview

Quantity:	100 µg
Target:	CCR3
Binding Specificity:	AA 1-20, N-Term
Reactivity:	Human
Host:	Rabbit
Clonality:	Polyclonal
Application:	Western Blotting (WB), Immunohistochemistry (Paraffin-embedded Sections) (IHC (p)), Immunocytochemistry (ICC)

Product Details

Purpose:	Rabbit IgG polyclonal antibody for C-C chemokine receptor type 3(CCR3) detection. Tested with WB, IHC-P, ICC in Human.
Immunogen:	A synthetic peptide corresponding to a sequence at the N-terminus of human CCR3(1-20aa MTTSLDTVETFGTTSYYDDV).
Sequence:	MTTSLDTVET FGTTSYYDDV
Isotype:	IgG
Cross-Reactivity (Details):	No cross reactivity with other proteins.
Characteristics:	Rabbit IgG polyclonal antibody for C-C chemokine receptor type 3(CCR3) detection. Tested with WB, IHC-P, ICC in Human. Gene Name: chemokine(C-C motif) receptor 3 Protein Name: C-C chemokine receptor type 3

Product Details

Purification: Immunogen affinity purified.

Target Details

Target: CCR3

Alternative Name: CCR3 ([CCR3 Products](#))

Background: C-C chemokine receptor type 3, also called CCR3 or CKR3 is a protein that in humans is encoded by the CCR3 gene. The protein encoded by this gene is a receptor for C-C type chemokines. It belongs to family 1 of the G protein-coupled receptors. This gene and seven other chemokine receptor genes form a chemokine receptor gene cluster on the chromosomal region 3p21. This receptor binds and responds to a variety of chemokines, including eotaxin(CCL11), eotaxin-3(CCL26), MCP-3(CCL7), MCP-4(CCL13), and RANTES(CCL5). It is highly expressed in eosinophils and basophils, and is also detected in TH1 and TH2 cells, as well as in airway epithelial cells. This receptor may contribute to the accumulation and activation of eosinophils and other inflammatory cells in the allergic airway. It is also known to be an entry co-receptor for HIV-1. Alternatively spliced transcript variants have been described.

Synonyms: B Chemokine Receptor antibody|b-chemokine receptor antibody|C C chemokine receptor type 3 antibody|C C CKR 3 antibody|C-C chemokine receptor type 3 antibody|C-C CKR-3 antibody|CC Chemokine Receptor 3 antibody|CC chemokine receptor type 3 antibody|CC CKR 3 antibody|CC R3 antibody|CC-CKR-3 antibody|CCCKR3 antibody|CCR 3 antibody|CCR-3 antibody|CCR3 antibody|CCR3_HUMAN antibody|CD 193 antibody|CD193 antibody|CD193 antigen antibody|Chemokine(C C motif) receptor 3 antibody|chemokine(C-C motif) receptor 3 antibody|Chemokine(CC) Receptor 1 Like 2 antibody|Chemokine CC Motif Receptor 3 antibody|Chemokine receptor 3 antibody|CK R3 antibody|CKR 3 antibody|CKR3 antibody|CMKB R3 antibody|CMKBR 3 antibody|CMKBR1L2 antibody|CMKBR3 antibody|Eosinophil CC Chemokine Receptor 3 antibody|Eosinophil Eotaxin Receptor antibody|Eotaxin Receptor antibody|Macrophage inflammatory protein 1 alpha receptor like 2 antibody|Macrophage Inflammatory Protein1 Alpha Receptor Like 2 antibody|MGC102841 antibody|MIP1 Alpha RL2 antibody

UniProt: [P51677](#)

Application Details

Application Notes: WB: Concentration: 0.1-0.5 µg/mL, Tested Species: Human
IHC-P: Concentration: 0.5-1 µg/mL, Tested Species: Human, Epitope Retrieval by Heat: Boiling

Application Details

the paraffin sections in 10 mM citrate buffer, pH 6.0, for 20 mins is required for the staining of formalin/paraffin sections.

ICC: Concentration: 0.5-1 µg/mL, Tested Species: Human

Notes: Tested Species: Species with positive results. Predicted Species: Species predicted to be fit for the product based on sequence similarities. Other applications have not been tested.

Optimal dilutions should be determined by end users.

Comment: Antibody can be supported by chemiluminescence kit ABIN921124 in WB, supported by ABIN921231 in IHC(P) and ICC.

Restrictions: For Research Use only

Handling

Format: Lyophilized

Reconstitution: Add 0.2 mL of distilled water will yield a concentration of 500 µg/mL.

Concentration: 500 µg/mL

Buffer: Each vial contains 5 mg BSA, 0.9 mg NaCl, 0.2 mg Na₂HPO₄, 0.05 mg Thimerosal, 0.05 mg Sodium azide.

Preservative: Thimerosal (Merthiolate), Sodium azide

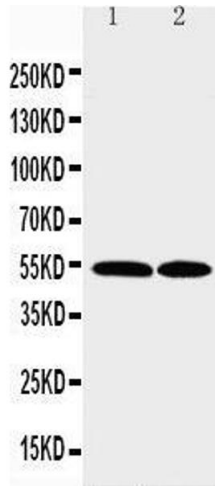
Precaution of Use: This product contains Sodium azide and Thimerosal (Merthiolate): POISONOUS AND HAZARDOUS SUBSTANCES which should be handled by trained staff only.

Handling Advice: Avoid repeated freezing and thawing.

Storage: 4 °C/-20 °C

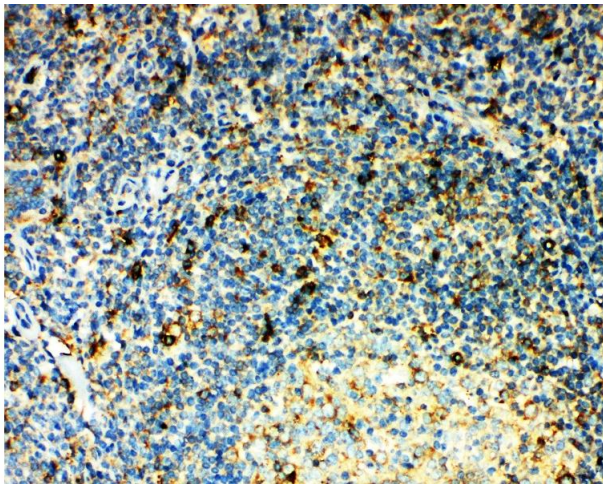
Storage Comment: At -20°C for one year. After reconstitution, at 4°C for one month.
It can also be aliquotted and stored frozen at -20 °C for a longer time. Avoid repeated freezing and thawing.

Expiry Date: 12 months



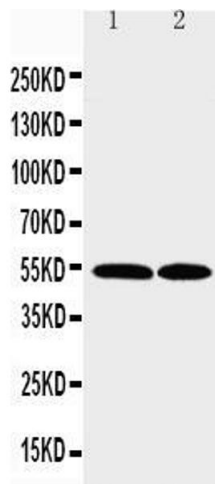
Western Blotting

Image 1. Anti-CCR3 antibody, Western blotting Lane 1: K562 Cell Lysate Lane 2: RAJI Cell Lysate



Immunohistochemistry

Image 2. Anti-CCR3 antibody, IHC(P) IHC(P): Human Tonsil Tissue



Western Blotting

Image 3. Anti-CCR3 antibody, Western blotting Lane 1: K562 Cell Lysate Lane 2: RAJI Cell Lysate