

Datasheet for ABIN3043997
anti-EGR1 antibody (N-Term)

5 Images

1 Publication

[Go to Product page](#)

Overview

Quantity:	100 µg
Target:	EGR1
Binding Specificity:	AA 23-43, N-Term
Reactivity:	Human, Rat
Host:	Rabbit
Clonality:	Polyclonal
Application:	Western Blotting (WB), Immunohistochemistry (Paraffin-embedded Sections) (IHC (p)), Immunocytochemistry (ICC), Immunohistochemistry (Frozen Sections) (IHC (fro))

Product Details

Purpose:	Rabbit IgG polyclonal antibody for Early growth response protein 1(EGR1) detection. Tested with WB, IHC-P, IHC-F, ICC in Human,Mouse,Rat.
Immunogen:	A synthetic peptide corresponding to a sequence at the N-terminus of human Egr1(23-43aa FPHSPTMDNYPKLEEMMLLSN), identical to the related rat and mouse sequences.
Sequence:	FPHSPTMDNY PKLEEMMLLS N
Isotype:	IgG
Cross-Reactivity (Details):	<p>Predicted Cross Reactivity: mouse</p> <p>No cross reactivity with other proteins.</p> <p>Predicted Cross Reactivity: Species predicted to be fit for the product based on sequence similarities.</p>
Characteristics:	Rabbit IgG polyclonal antibody for Early growth response protein 1(EGR1) detection. Tested

Product Details

with WB, IHC-P, IHC-F, ICC in Human, Mouse, Rat.

Gene Name: early growth response 1

Protein Name: Early growth response protein 1

Purification: Immunogen affinity purified.

Target Details

Target: EGR1

Alternative Name: EGR1 ([EGR1 Products](#))

Background: Early growth response protein 1, also known as ZIF268 or NGFIA, is a protein that in humans is encoded by the EGR1 gene. The protein encoded by this gene belongs to the EGR family of C2H2-type zinc-finger proteins. This gene is mapped to 5q31.2. It is a nuclear protein and functions as a transcriptional regulator. The products of target genes it activates are required for differentiation and mitogenesis. Studies suggest this is a cancer suppressor gene. It has a distinct pattern of expression in the brain, and its induction has been shown to be associated with neuronal activity. Several studies suggest it has a role in neuronal plasticity.

Synonyms: AT 225 antibody|AT225 antibody|Early growth response 1 antibody|Early growth response protein 1 antibody|EGR 1 antibody|EGR-1 antibody|EGR1 antibody|EGR1_HUMAN antibody|G0S 30 antibody|G0S30 antibody|KROX 24 antibody|Krox 24 protein antibody|KROX24 antibody|Nerve growth factor induced protein A antibody|Nerve growth factor-induced clone A antibody|Nerve growth factor-induced protein A antibody|NGFI A antibody|NGFI-A antibody|NGFIA antibody|TIS 8 antibody|TIS8 antibody|Transcription factor ETR 103 antibody|Transcription factor ETR103 antibody|Transcription factor Zif 268 antibody|Transcription factor Zif268 antibody|Zfp 6 antibody|ZIF 268 antibody|ZIF268 antibody|Zinc finger protein 225 antibody|Zinc finger protein Krox-24 antibody|ZNF 225 antibody|ZNF225 antibody

UniProt: [P18146](#)

Pathways: [Regulation of Carbohydrate Metabolic Process](#), [Regulation of long-term Neuronal Synaptic Plasticity](#)

Application Details

Application Notes: WB: Concentration: 0.1-0.5 µg/mL, Tested Species: Human, Rat, Predicted Species: Mouse
IHC-P: Concentration: 0.5-1 µg/mL, Tested Species: Human, Rat, Predicted Species: Mouse,

Application Details

Epitope Retrieval by Heat: Boiling the paraffin sections in 10 mM citrate buffer, pH 6.0, for 20 mins is required for the staining of formalin/paraffin sections.

IHC-F: Concentration: 0.5-1 µg/mL, Tested Species: Rat, Predicted Species: Human, Mouse

ICC: Concentration: 0.5-1 µg/mL, Tested Species: Human, Predicted Species: Mouse, Rat

Notes: Tested Species: Species with positive results. Predicted Species: Species predicted to be fit for the product based on sequence similarities. Other applications have not been tested.

Optimal dilutions should be determined by end users.

Comment: Antibody can be supported by chemiluminescence kit ABIN921124 in WB, supported by ABIN921231 in IHC(P), IHC(F) and ICC.

Restrictions: For Research Use only

Handling

Format: Lyophilized

Reconstitution: Add 0.2 mL of distilled water will yield a concentration of 500 µg/mL.

Concentration: 500 µg/mL

Buffer: Each vial contains 5 mg BSA, 0.9 mg NaCl, 0.2 mg Na₂HPO₄, 0.05 mg Thimerosal, 0.05 mg Sodium azide.

Preservative: Thimerosal (Merthiolate), Sodium azide

Precaution of Use: This product contains Sodium azide and Thimerosal (Merthiolate): POISONOUS AND HAZARDOUS SUBSTANCES which should be handled by trained staff only.

Handling Advice: Avoid repeated freezing and thawing.

Storage: 4 °C/-20 °C

Storage Comment: At -20°C for one year. After reconstitution, at 4°C for one month.

It can also be aliquotted and stored frozen at -20 °C for a longer time. Avoid repeated freezing and thawing.

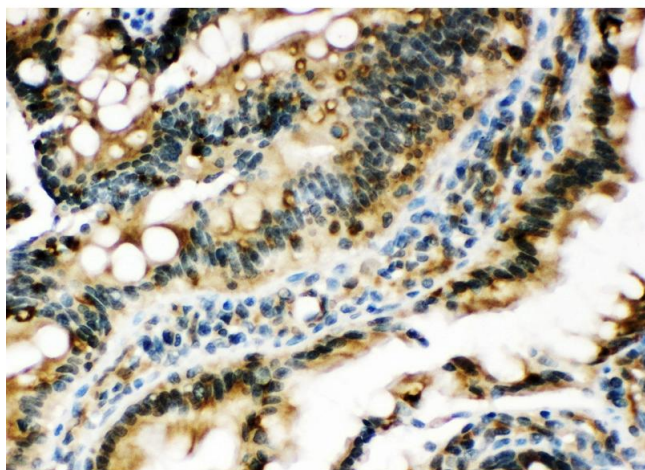
Expiry Date: 12 months

Publications

Product cited in: Liu, Hong, Li, Ren, Wang, Xu, Shi, Xu: "A Cross Talk Between BRG1 and Males Absent on the First Contributes to Reactive Oxygen Species Production in a Mouse Model of Nonalcoholic Steatohepatitis." in: **Antioxidants & redox signaling**, (2018) ([PubMed](#)).

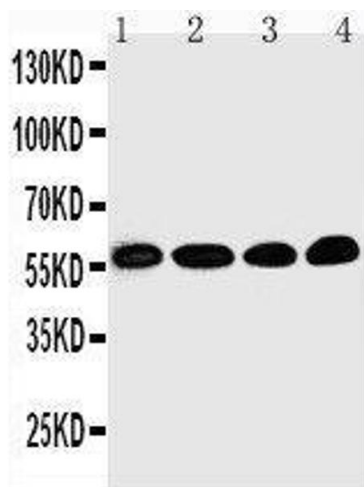
Meyer, Fredette, Daniel, Sharma, Amann, Arterburn, Barton, Prossnitz: "Obligatory role for GPER in cardiovascular aging and disease." in: **Science signaling**, Vol. 9, Issue 452, pp. ra105, (2017) ([PubMed](#)).

Images



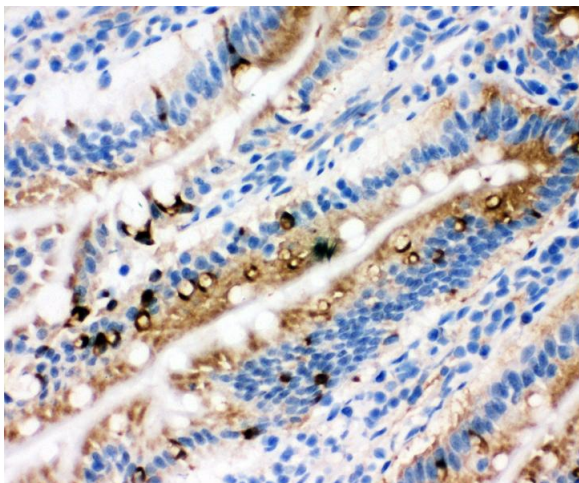
Immunohistochemistry

Image 1. Anti-Egr1 antibody, IHC(P) IHC(P): Rat Intestine Tissue



Western Blotting

Image 2. Anti-Egr1 antibody, Western blotting Lane 1: Rat Brain Tissue Lysate Lane 2: HELA Cell Lysate Lane 3: MCF-7 Cell Lysate Lane 4: COLO320 Cell Lysate



Immunohistochemistry

Image 3. Anti-Egr1 antibody, IHC(F) IHC(F): Rat Intestine Tissue

Please check the [product details page](#) for more images. Overall 5 images are available for ABIN3043997.