

Datasheet for ABIN3043999
anti-HYAL1 antibody (N-Term)

5 Images

[Go to Product page](#)

Overview

Quantity:	100 µg
Target:	HYAL1
Binding Specificity:	AA 32-47, N-Term
Reactivity:	Human
Host:	Rabbit
Clonality:	Polyclonal
Application:	Western Blotting (WB), Immunohistochemistry (Paraffin-embedded Sections) (IHC (p)), Immunocytochemistry (ICC), Immunohistochemistry (Frozen Sections) (IHC (fro))

Product Details

Purpose:	Rabbit IgG polyclonal antibody for Hyaluronidase-1(HYAL1) detection. Tested with WB, IHC-P, IHC-F, ICC in Human.
Immunogen:	A synthetic peptide corresponding to a sequence at the N-terminus of human HYAL1(32-47aa FTTVWNANTQWCLERH).
Sequence:	FTTVWNANTQ WCLERH
Isotype:	IgG
Cross-Reactivity (Details):	No cross reactivity with other proteins.
Characteristics:	Rabbit IgG polyclonal antibody for Hyaluronidase-1(HYAL1) detection. Tested with WB, IHC-P, IHC-F, ICC in Human. Gene Name: hyaluronoglucosaminidase 1 Protein Name: Hyaluronidase-1

Product Details

Purification: Immunogen affinity purified.

Target Details

Target: HYAL1

Alternative Name: HYAL1 ([HYAL1 Products](#))

Background: Hyaluronidase-1, also known as HYAL1 or LUCA1, is an enzyme that in humans is encoded by the HYAL1 gene. The gene is one of several related genes in a region of chromosome 3p21.3 associated with tumor suppression. This gene encodes a lysosomal hyaluronidase. Hyaluronidases intracellularly degrade hyaluronan, one of the major glycosaminoglycans of the extracellular matrix. Hyaluronan is thought to be involved in cell proliferation, migration and differentiation. This enzyme is active at an acidic pH and is the major hyaluronidase in plasma. Mutations in this gene are associated with mucopolysaccharidosis type IX, or hyaluronidase deficiency.

Synonyms: HYAL 1 antibody|Hyal-1 antibody|HYAL1 antibody|HYAL1_HUMAN antibody|Hyaluronidase 1 antibody|Hyaluronidase-1 antibody|Hyaluronoglucosaminidase 1 antibody|Hyaluronoglucosaminidase-1 antibody|Hyaluronoglucosaminidase1 antibody|LUCA 1 antibody|LUCA-1 antibody|LUCA1 antibody|Lung carcinoma protein 1 antibody|MGC45987 antibody|NAT6 antibody|Plasma hyaluronidase antibody|Tumor suppressor LUCA 1 antibody

UniProt: [Q12794](#)

Pathways: [Glycosaminoglycan Metabolic Process](#)

Application Details

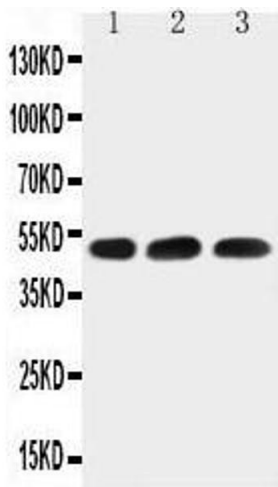
Application Notes: WB: Concentration: 0.1-0.5 µg/mL, Tested Species: Human
IHC-P: Concentration: 0.5-1 µg/mL, Tested Species: Human, Epitope Retrieval by Heat: Boiling the paraffin sections in 10 mM citrate buffer, pH 6.0, for 20 mins is required for the staining of formalin/paraffin sections.
IHC-F: Concentration: 0.5-1 µg/mL, Tested Species: Human
ICC: Concentration: 0.5-1 µg/mL, Tested Species: Human
Notes: Tested Species: Species with positive results. Predicted Species: Species predicted to be fit for the product based on sequence similarities. Other applications have not been tested.
Optimal dilutions should be determined by end users.

Comment: Antibody can be supported by chemiluminescence kit ABIN921124 in WB, supported by

Application Details

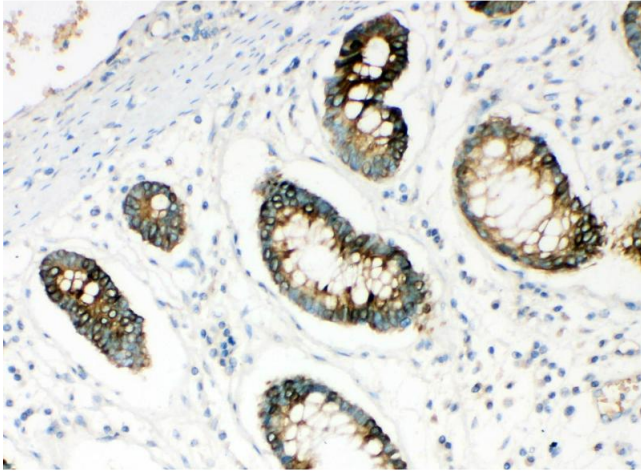
	ABIN921231 in IHC(P), IHC(F) and ICC.
Restrictions:	For Research Use only
Handling	
Format:	Lyophilized
Reconstitution:	Add 0.2 mL of distilled water will yield a concentration of 500 µg/mL.
Concentration:	500 µg/mL
Buffer:	Each vial contains 5 mg BSA, 0.9 mg NaCl, 0.2 mg Na2HPO4, 0.05 mg Thimerosal, 0.05 mg Sodium azide.
Preservative:	Thimerosal (Merthiolate), Sodium azide
Precaution of Use:	This product contains Sodium azide and Thimerosal (Merthiolate): POISONOUS AND HAZARDOUS SUBSTANCES which should be handled by trained staff only.
Handling Advice:	Avoid repeated freezing and thawing.
Storage:	4 °C/-20 °C
Storage Comment:	At -20°C for one year. After reconstitution, at 4°C for one month. It can also be aliquotted and stored frozen at -20 °C for a longer time. Avoid repeated freezing and thawing.
Expiry Date:	12 months

Validation report #300031 for Immunohistochemistry (IHC)



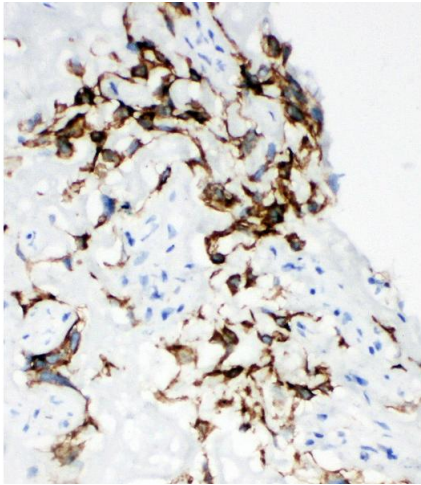
Western Blotting

Image 1. Anti-HYAL1 antibody, Western blotting Lane 1: HELA Cell Lysate Lane 2: 22RV1 Cell Lysate Lane 3: MCF-7 Cell Lysate



Immunohistochemistry

Image 2. Anti-HYAL1 antibody, IHC(P) IHC(P): Human Intestinal Cancer Tissue



Immunohistochemistry

Image 3. Anti-HYAL1 antibody, IHC(F) IHC(F): Human Placenta Tissue

Please check the [product details page](#) for more images. Overall 5 images are available for ABIN3043999.