

Datasheet for ABIN3044010
anti-MYBL2 antibody (N-Term)

5 Images

1 Publication

[Go to Product page](#)

Overview

Quantity:	100 µg
Target:	MYBL2
Binding Specificity:	AA 1-17, N-Term
Reactivity:	Human, Rat
Host:	Rabbit
Clonality:	Polyclonal
Application:	Western Blotting (WB), Immunohistochemistry (Paraffin-embedded Sections) (IHC (p)), Immunocytochemistry (ICC)

Product Details

Purpose:	Rabbit IgG polyclonal antibody for Myb-related protein B(MYBL2) detection. Tested with WB, IHC-P, ICC in Human, Mouse, Rat.
Immunogen:	A synthetic peptide corresponding to a sequence at the N-terminus of human B MyB(1-17aa MSRRTRCEDLDELHYQD), identical to the related mouse sequence and different from the related rat sequence by two amino acids.
Sequence:	MSRRTRCEDL DELHYQD
Isotype:	IgG
Cross-Reactivity (Details):	<p>Predicted Cross Reactivity: mouse</p> <p>No cross reactivity with other proteins.</p> <p>Predicted Cross Reactivity: Species predicted to be fit for the product based on sequence similarities.</p>

Product Details

Characteristics:	Rabbit IgG polyclonal antibody for Myb-related protein B(MYBL2) detection. Tested with WB, IHC-P, ICC in Human,Mouse,Rat. Gene Name: v-myb myeloblastosis viral oncogene homolog(avian)-like 2 Protein Name: Myb-related protein B
Purification:	Immunogen affinity purified.

Target Details

Target:	MYBL2
Alternative Name:	MYBL2 (MYBL2 Products)
Background:	<p>MYBL2(V-MYB avian myeloblastosis viral oncogene homolog-like 2), also called MYB-RELATED GENE BMYB, is a protein that in humans is encoded by the MYBL2 gene. The protein encoded by this gene, a member of the MYB family of transcription factor genes, is a nuclear protein involved in cell cycle progression. Barletta et al.(1991) assigned the MYBL2 gene to chromosome Xq13. However, Noben-Trauth et al.(1996) demonstrated that this assignment was an error. Using mouse Mybl2 cDNA clones as probes, they assigned Mybl2 in an interspecific backcross panel to distal mouse chromosome 2. Using human cDNA probes in combination with fluorescence in situ hybridization analysis, they localized MYBL2 to chromosome 20q13.1, a region that is commonly deleted in myeloid disorders and shows high homology of synteny to mouse chromosome 2. It has been shown to activate the cell division cycle 2, cyclin D1, and insulin-like growth factor-binding protein 5 genes. Transcript variants may exist for this gene, but their full-length natures have not been determined.</p> <p>Synonyms: B-Myb antibody BMyB antibody MGC15600 antibody MYB L2 antibody Myb related protein B antibody Myb-like protein 2 antibody Myb-related protein B antibody MybB antibody MYBB_HUMAN antibody MYBL 2 antibody MYBL2 antibody v myb avian myeloblastosis viral oncogene homolog like 2 antibody v myb myeloblastosis viral oncogene homolog(avian) like 2 antibody v myb myeloblastosis viral oncogene homolog like 2 antibody</p>
UniProt:	P10244
Pathways:	Cell Division Cycle , Mitotic G1-G1/S Phases , Chromatin Binding

Application Details

Application Notes:	WB: Concentration: 0.1-0.5 µg/mL, Tested Species: Human, Rat, Predicted Species: Mouse, The detection limit for MYBL2 is approximately 0.5 ng/lane under reducing conditions.
--------------------	---

Application Details

IHC-P: Concentration: 0.5-1 µg/mL, Tested Species: Human, Rat, Predicted Species: Mouse, Epitope Retrieval by Heat: Boiling the paraffin sections in 10 mM citrate buffer, pH 6.0, for 20 mins is required for the staining of formalin/paraffin sections.

ICC: Concentration: 0.5-1 µg/mL, Tested Species: Human, Predicted Species: Mouse, Rat

Notes: Tested Species: Species with positive results. Predicted Species: Species predicted to be fit for the product based on sequence similarities. Other applications have not been tested.

Optimal dilutions should be determined by end users.

Comment: Antibody can be supported by chemiluminescence kit ABIN921124 in WB, supported by ABIN921231 in IHC(P) and ICC.

Restrictions: For Research Use only

Handling

Format: Lyophilized

Reconstitution: Add 0.2 mL of distilled water will yield a concentration of 500 µg/mL.

Concentration: 500 µg/mL

Buffer: Each vial contains 5 mg BSA, 0.9 mg NaCl, 0.2 mg Na₂HPO₄, 0.05 mg Thimerosal, 0.05 mg Sodium azide.

Preservative: Thimerosal (Merthiolate), Sodium azide

Precaution of Use: This product contains Sodium azide and Thimerosal (Merthiolate): POISONOUS AND HAZARDOUS SUBSTANCES which should be handled by trained staff only.

Handling Advice: Avoid repeated freezing and thawing.

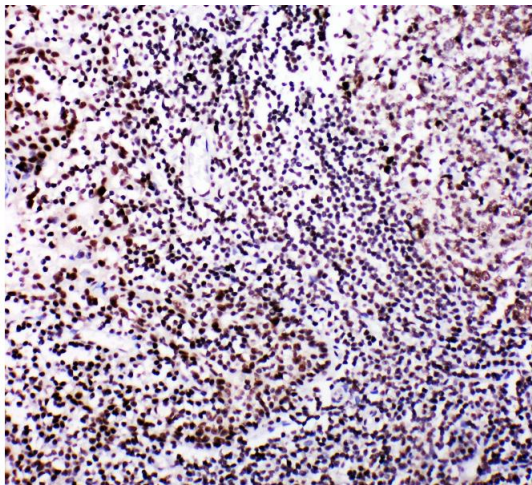
Storage: 4 °C/-20 °C

Storage Comment: At -20°C for one year. After reconstitution, at 4°C for one month.
It can also be aliquotted and stored frozen at -20 °C for a longer time. Avoid repeated freezing and thawing.

Expiry Date: 12 months

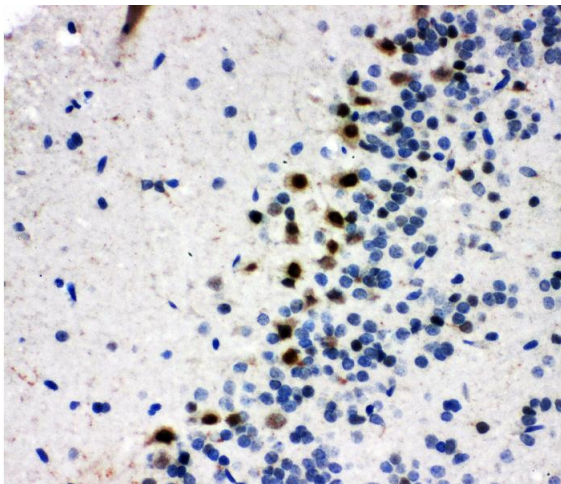
Publications

Product cited in: Xu, Tang, Li, Shi, Chen, Liang: "Positional and expressive alteration of prohibitin during the induced differentiation of human hepatocarcinoma SMMC-7721 cells." in: **World journal of gastroenterology**, Vol. 14, Issue 32, pp. 5008-14, (2008) ([PubMed](#)).



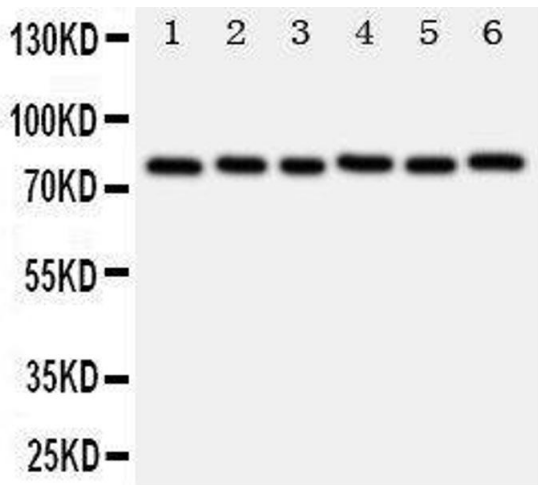
Immunohistochemistry

Image 1. Anti-B MyB antibody, IHC(P) IHC(P): Human Tonsil Tissue



Immunohistochemistry

Image 2. Anti-B MyB antibody, IHC(P) IHC(P): Rat Brain Tissue



Western Blotting

Image 3. Anti-B MyB antibody, Western blotting Lane 1: Rat Spleen Tissue Lysate Lane 2: Rat Thymus Tissue Lysate Lane 3: Rat Brain Tissue Lysate Lane 4: HELA Cell Lysate Lane 5: COLO320 Cell Lysate Lane 6: MCF-7 Cell Lysate

Please check the [product details page](#) for more images. Overall 5 images are available for ABIN3044010.