

Datasheet for ABIN3044031
anti-CUEDC2 antibody (C-Term)[Go to Product page](#)

2 Images

Overview

| | |
|----------------------|--|
| Quantity: | 100 µg |
| Target: | CUEDC2 |
| Binding Specificity: | AA 267-287, C-Term |
| Reactivity: | Human |
| Host: | Rabbit |
| Clonality: | Polyclonal |
| Conjugate: | This CUEDC2 antibody is un-conjugated |
| Application: | Western Blotting (WB), Immunohistochemistry (Paraffin-embedded Sections) (IHC (p)) |

Product Details

| | |
|-----------------------------|---|
| Purpose: | Rabbit IgG polyclonal antibody for CUE domain-containing protein 2(CUEDC2) detection. Tested with WB, IHC-P in Human,Mouse,Rat. |
| Immunogen: | A synthetic peptide corresponding to a sequence at the C-terminus of human CUEDC2(267-287aa EAEEMKATYINLKPARKYRFH), identical to the related mouse sequence, and different from the related rat sequence by one amino acid. |
| Sequence: | EAEEMKATYI NLKPARKYRF H |
| Isotype: | IgG |
| Cross-Reactivity (Details): | <p>Predicted Cross Reactivity: mouse, rat</p> <p>No cross reactivity with other proteins.</p> <p>Predicted Cross Reactivity: Species predicted to be fit for the product based on sequence similarities.</p> |

Product Details

| | |
|------------------|--|
| Characteristics: | Rabbit IgG polyclonal antibody for CUE domain-containing protein 2(CUEDC2) detection. Tested with WB, IHC-P in Human,Mouse,Rat. Gene Name: CUE domain containing 2 Protein Name: CUE domain-containing protein 2 |
| Purification: | Immunogen affinity purified. |

Target Details

| | |
|-------------------|---|
| Target: | CUEDC2 |
| Alternative Name: | CUEDC2 (CUEDC2 Products) |
| Background: | <p>CUEDC2(Cue Domain-Containing Protein 2) is involved in ubiquitin-and proteasome-mediated degradation of progesterone receptor(PR, or PGR) and estrogen receptor(ER)-alpha. Hartz(2011) mapped the CUEDC2 gene to chromosome 10q24.32 based on an alignment of the CUEDC2 sequence with the genomic sequence(GRCh37). Using coimmunoprecipitation analysis and protein pull-down assays, Zhang et al.(2007) confirmed that CUEDC2 interacted with the PRB isoform of PR. Mutation analysis revealed that the IF domain of PRB and the CUE domain of CUEDC2 were required for the interaction. CUEDC2 reduced PRB protein content and promoted progesterone-induced PRB degradation via the ubiquitin-proteasome pathway.</p> <p>Synonyms: bA1814.5 antibody C10orf66 antibody Chromosome 10 open reading frame 66 antibody CUE domain containing 2 antibody CUE domain-containing protein 2 antibody CUED2 antibody CUED2_HUMAN antibody Cuedc2 antibody MGC2491 antibody OTTHUMP00000020368 antibody</p> |
| UniProt: | Q9H467 |

Application Details

| | |
|--------------------|--|
| Application Notes: | <p>WB: Concentration: 0.1-0.5 µg/mL, Tested Species: Human, Predicted Species: Mouse, Rat, The detection limit for CUEDC2 is approximately 0.5 ng/lane under reducing conditions.</p> <p>IHC-P: Concentration: 0.5-1 µg/mL, Tested Species: Human, Predicted Species: Mouse, Rat, Epitope Retrieval by Heat: Boiling the paraffin sections in 10 mM citrate buffer, pH 6.0, for 20 mins is required for the staining of formalin/paraffin sections.</p> <p>Notes: Tested Species: Species with positive results. Predicted Species: Species predicted to be fit for the product based on sequence similarities. Other applications have not been tested.</p> <p>Optimal dilutions should be determined by end users.</p> |
|--------------------|--|

Application Details

| | |
|---------------|---|
| Comment: | Antibody can be supported by chemiluminescence kit ABIN921124 in WB, supported by ABIN921231 in IHC(P). |
| Restrictions: | For Research Use only |

Handling

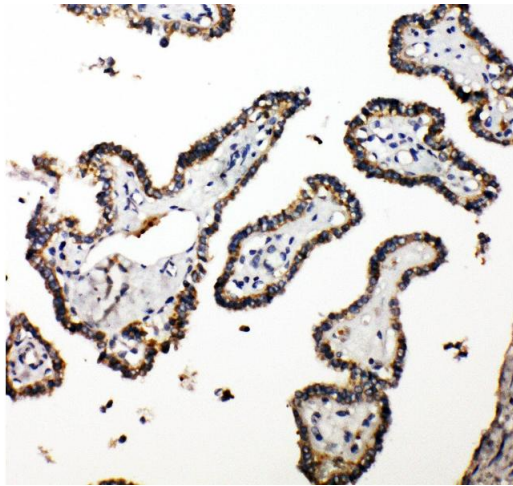
| | |
|--------------------|---|
| Format: | Lyophilized |
| Reconstitution: | Add 0.2 mL of distilled water will yield a concentration of 500 µg/mL. |
| Concentration: | 500 µg/mL |
| Buffer: | Each vial contains 5 mg BSA, 0.9 mg NaCl, 0.2 mg Na ₂ HPO ₄ , 0.05 mg Thimerosal, 0.05 mg Sodium azide. |
| Preservative: | Thimerosal (Merthiolate), Sodium azide |
| Precaution of Use: | This product contains Sodium azide and Thimerosal (Merthiolate): POISONOUS AND HAZARDOUS SUBSTANCES which should be handled by trained staff only. |
| Handling Advice: | Avoid repeated freezing and thawing. |
| Storage: | 4 °C/-20 °C |
| Storage Comment: | At -20°C for one year. After reconstitution, at 4°C for one month. It can also be aliquotted and stored frozen at -20 °C for a longer time. Avoid repeated freezing and thawing. |
| Expiry Date: | 12 months |

Images



Western Blotting

Image 1. Lane 4: Recombinant Human CuEDC2 Protein 1.25ng



Immunohistochemistry

Image 2. Anti-CUEDC2 antibody, IHC(P) IHC(P): Human Thyroid Cancer Tissue