

Datasheet for ABIN3044037
anti-TJP3 antibody (C-Term)

3 Images

[Go to Product page](#)

Overview

Quantity:	100 µg
Target:	TJP3
Binding Specificity:	AA 885-905, C-Term
Reactivity:	Rat
Host:	Rabbit
Clonality:	Polyclonal
Conjugate:	This TJP3 antibody is un-conjugated
Application:	Western Blotting (WB), Immunohistochemistry (Paraffin-embedded Sections) (IHC (p))

Product Details

Purpose:	Rabbit IgG polyclonal antibody for Tight junction protein ZO-3(TJP3) detection. Tested with WB, IHC-P in Mouse,Rat.
Immunogen:	A synthetic peptide corresponding to a sequence at the C-terminus of mouse Zonula occludens protein 3(885-905aa RARDVESSDDEGYDWGPATDL), identical to the related rat sequence.
Sequence:	RARDVESSDD EGYDWGPATD L
Isotype:	IgG
Cross-Reactivity (Details):	<p>Predicted Cross Reactivity: mouse</p> <p>No cross reactivity with other proteins.</p> <p>Predicted Cross Reactivity: Species predicted to be fit for the product based on sequence similarities.</p>
Characteristics:	Rabbit IgG polyclonal antibody for Tight junction protein ZO-3(TJP3) detection. Tested with WB,

Product Details

IHC-P in Mouse,Rat.

Gene Name: tight junction protein 3

Protein Name: Tight junction protein ZO-3

Purification: Immunogen affinity purified.

Target Details

Target: TJP3

Alternative Name: TJP3 ([TJP3 Products](#))

Background: TJP3(TIGHT JUNCTION PROTEIN 3), also called ZO3, is a protein that in humans is encoded by the TJP3 gene. TJP3 is a member of the family of membrane-associated guanylate kinase-like proteins(MAGUK) that associate with intracellular junctions(Itoh et al., 1999). Haskins et al.(1998) showed that recombinant Tjp3 binds in vitro translated Tjp1 and binds directly to the cytoplasmic tail of occludin but no binding was detected between Tjp3 and Tjp2. Roh et al.(2002) determined that Tjp3 interacted with PATJ(INADL) and that both proteins colocalized to tight junctions in vivo. In vitro studies showed that the sixth and eighth PDZ domains of PATJ mediated interaction with the Tjp3 C-terminal domain and with Cldn1, respectively.

Synonyms: Tight junction protein 3 antibody|Tight junction protein ZO-3 antibody|Tight junction protein ZO3 antibody|TJP3 antibody|ZO3 antibody|ZO3_HUMAN antibody|Zona occludens protein 3 antibody|Zonula occludens protein 3 antibody

Application Details

Application Notes: WB: Concentration: 0.1-0.5 µg/mL, Tested Species: Rat, Predicted Species: Mouse
IHC-P: Concentration: 0.5-1 µg/mL, Tested Species: Mouse, Rat, Epitope Retrieval by Heat: Boiling the paraffin sections in 10 mM citrate buffer, pH 6.0, for 20 mins is required for the staining of formalin/paraffin sections.
Notes: Tested Species: Species with positive results. Predicted Species: Species predicted to be fit for the product based on sequence similarities. Other applications have not been tested.
Optimal dilutions should be determined by end users.

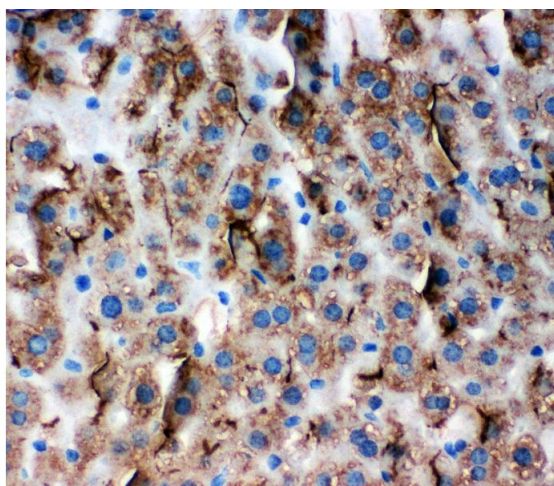
Comment: Antibody can be supported by chemiluminescence kit ABIN921124 in WB, supported by ABIN921231 in IHC(P).

Restrictions: For Research Use only

Handling

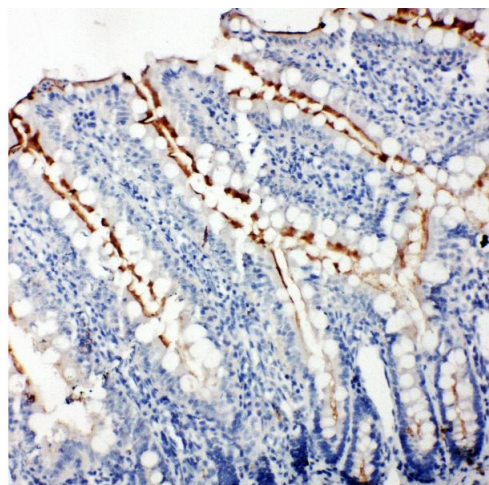
Format:	Lyophilized
Reconstitution:	Add 0.2 mL of distilled water will yield a concentration of 500 µg/mL.
Concentration:	500 µg/mL
Buffer:	Each vial contains 5 mg BSA, 0.9 mg NaCl, 0.2 mg Na ₂ HPO ₄ , 0.05 mg Thimerosal, 0.05 mg Sodium azide.
Preservative:	Thimerosal (Merthiolate), Sodium azide
Precaution of Use:	This product contains Sodium azide and Thimerosal (Merthiolate): POISONOUS AND HAZARDOUS SUBSTANCES which should be handled by trained staff only.
Handling Advice:	Avoid repeated freezing and thawing.
Storage:	4 °C/-20 °C
Storage Comment:	At -20°C for one year. After reconstitution, at 4°C for one month. It can also be aliquotted and stored frozen at -20 °C for a longer time. Avoid repeated freezing and thawing.
Expiry Date:	12 months

Images



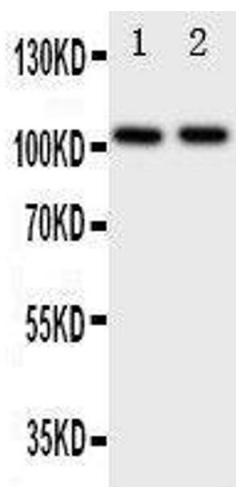
Immunohistochemistry

Image 1. Anti-Zonula occludens protein 3 antibody, IHC(P)
IHC(P): Mouse Liver Tissue



Immunohistochemistry

Image 2. Anti-Zonula occludens protein 3 antibody, IHC(P)
IHC(P): Rat Intestine Tissue



Western Blotting

Image 3. Anti-Zonula occludens protein 3 antibody, Western blotting Lane 1: Rat Brain Tissue Lysate Lane 2: Rat Heart Tissue Lysate