

Datasheet for ABIN3044039
anti-TRPV2 antibody (N-Term)

3 Images

[Go to Product page](#)

Overview

Quantity:	100 µg
Target:	TRPV2
Binding Specificity:	AA 42-624, N-Term
Reactivity:	Human
Host:	Rabbit
Clonality:	Polyclonal
Conjugate:	This TRPV2 antibody is un-conjugated
Application:	Western Blotting (WB), Immunohistochemistry (Paraffin-embedded Sections) (IHC (p)), Immunohistochemistry (Frozen Sections) (IHC (fro))

Product Details

Purpose:	Rabbit IgG polyclonal antibody for Transient receptor potential cation channel subfamily V member 2 (TRPV2) detection. Tested with WB, IHC-P, IHC-F in Human.
Immunogen:	A synthetic peptide corresponding to a sequence at the N-terminus of human VRL1(42-624aa QFQGEDRKFA PQIRVNLNYRK).
Sequence:	QFQGEDRKFA PQIRVNLNYR K
Isotype:	IgG
Cross-Reactivity (Details):	No cross reactivity with other proteins.
Characteristics:	Rabbit IgG polyclonal antibody for Transient receptor potential cation channel subfamily V member 2 (TRPV2) detection. Tested with WB, IHC-P, IHC-F in Human. Gene Name: transient receptor potential cation channel, subfamily V, member 2

Product Details

Protein Name: Transient receptor potential cation channel subfamily V member 2

Purification: Immunogen affinity purified.

Target Details

Target: TRPV2

Alternative Name: TRPV2 ([TRPV2 Products](#))

Background: TRPV2(Transient Receptor Potential Cation Channel Subfamily V Member 2), also known as VRL1, is a protein that, in humans, is encoded by the TRPV1 gene. The International Radiation Hybrid Mapping Consortium mapped the TRPV2 gene to chromosome 17. This gene encodes an ion channel that is activated by high temperatures above 52 °C. The protein may be involved in transduction of high-temperature heat responses in sensory ganglia. It is though that in other tissues the channel may be activated by stimuli other than heat.

Synonyms: MGC12549 antibody|Osm 9 like TRP channel 2 antibody|osm-9-like TRP channel 2 antibody|OTRPC2 antibody|Sac2b antibody|Sac2b(gene name) antibody|Stretch activated channel 2B antibody|Stretch-activated channel 2B antibody|Transient receptor potential cation channel subfamily V member 2 antibody|TrpV2 antibody|TRPV2_HUMAN antibody|Vanilloid receptor like protein 1 antibody|Vanilloid receptor-like protein 1 antibody|VRL 1 antibody|VRL antibody|VRL-1 antibody|VRL1 antibody

UniProt: [Q9Y5S1](#)

Pathways: [Regulation of Cell Size](#)

Application Details

Application Notes: WB: Concentration: 0.1-0.5 µg/mL, Tested Species: Human, The detection limit for TRPV2 is approximately 0.5 ng/lane under reducing conditions.

IHC-P: Concentration: 0.5-1 µg/mL, Tested Species: Human, Epitope Retrieval by Heat: Boiling the paraffin sections in 10 mM citrate buffer, pH 6.0, for 20 mins is required for the staining of formalin/paraffin sections.

IHC-F: Concentration: 0.5-1 µg/mL, Tested Species: Human

Notes: Tested Species: Species with positive results. Predicted Species: Species predicted to be fit for the product based on sequence similarities. Other applications have not been tested.

Optimal dilutions should be determined by end users.

Comment: Antibody can be supported by chemiluminescence kit ABIN921124 in WB, supported by

Application Details

ABIN921231 in IHC(P) and IHC(F).

Restrictions: For Research Use only

Handling

Format: Lyophilized

Reconstitution: Add 0.2 mL of distilled water will yield a concentration of 500 µg/mL.

Concentration: 500 µg/mL

Buffer: Each vial contains 5 mg BSA, 0.9 mg NaCl, 0.2 mg Na₂HPO₄, 0.05 mg Thimerosal, 0.05 mg Sodium azide.

Preservative: Thimerosal (Merthiolate), Sodium azide

Precaution of Use: This product contains Sodium azide and Thimerosal (Merthiolate): POISONOUS AND HAZARDOUS SUBSTANCES which should be handled by trained staff only.

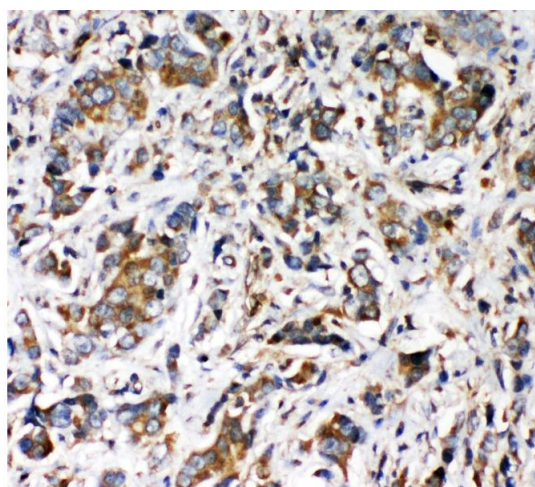
Handling Advice: Avoid repeated freezing and thawing.

Storage: 4 °C/-20 °C

Storage Comment: At -20°C for one year. After reconstitution, at 4°C for one month.
It can also be aliquotted and stored frozen at -20 °C for a longer time. Avoid repeated freezing and thawing.

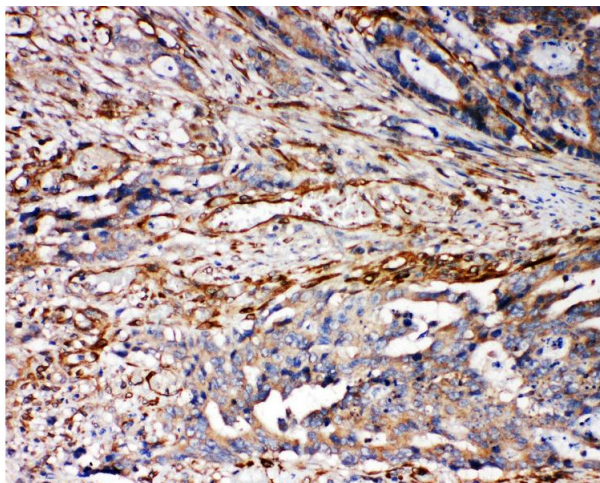
Expiry Date: 12 months

Images



Immunohistochemistry

Image 1. Anti-VRL1 antibody, IHC(P) IHC(P): Human Intestinal Cancer Tissue



Immunohistochemistry

Image 2. Anti-VRL1 antibody, IHC(P) IHC(P): Human Mammary Cancer Tissue



Western Blotting

Image 3. Anti-VRL1 antibody, Western blotting WB: HELA Cell Lysate